

Bitta

Club armchair

bela rope

aluminium

by Rodolfo Dordoni

**kettal**

# Club armchair bela rope aluminium

Designer  
Rodolfo Dordoni

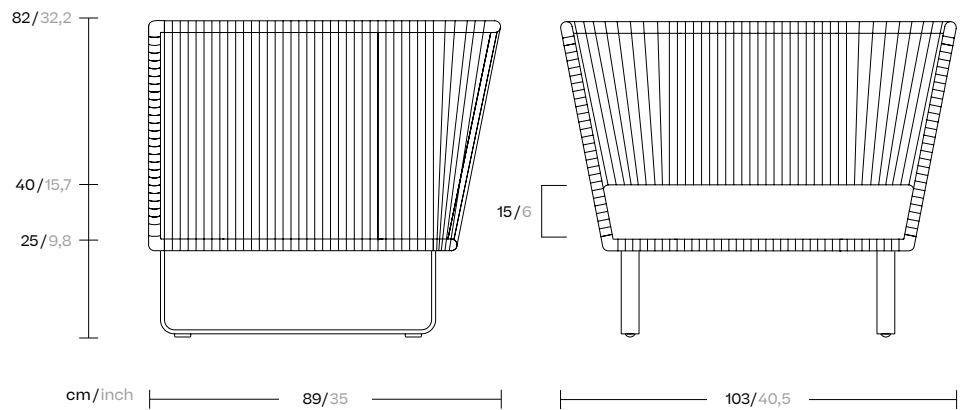
Collection  
Bitta

Reference  
KS7000300

1/6

Kettal Bitta is characterised by a combination of aluminium frames, seats of braided polyester and comfortable cushions, teak and stone for the table tops. My aim was to create dense braiding that would still let the air through, reminiscent of the braiding of the ropes used to moor boats (hence the name Bitta, which means 'mooring' in Italian), which makes the pieces look lightweight but, at the same time, they look just like cosy nests in natural colours to sit back and relax in.

cm/inch



kettal

# Club armchair bela rope aluminium

Designer  
Rodolfo Dordoni

Collection  
Bitta

Reference  
KS7000300

2/6

## Materials

### Aluminium

Antioxy, Heavy Load, Resistant  
En-1421, Anti-Scratch, Easy  
Clean, Flame Retardant M1, Eco  
Friendly Ecoembes Recycling  
Process Foam UNI 9175 (Classe  
11M), Anti-Mold, Flame Retardant  
M1

### Rope

Antioxy, Resist U.V, En-581-4, Easy  
Clean

### Fabric

Heavy Load 100.000 Cycles,  
Heavy Load Resistant  
1000 Decitex, Kettalize-It,  
Resist U.v. En-581-4, Easy Clean,  
Abrasion, Resistance 30.000  
Cycles, Quickdry

## Frame Colour Options

## Terrain Coatings (for Aluminium)

				
Slate Stone 01C	Mysty Smoke 02C	Ash 03C	Bone 04C	Tuff 05C
				
Wet Stone 06C	Sand Dune 07C	Dry Clay 08C	Arabica 09C	Sepia 19C
				
Rose Canyon 16C	Blossom 20C	Ruby Dust 18C	Sunset Glow 17C	Terrarosa 15C
				
Terracota 14C	Amber 13C	Ginger Root 12C	Desert Storm 11C	African Savannah 10C
				
Spring Meadow 28C	Kombu 29C	Forest Stream 27C	Sea Moss 26C	Glacier Ice 25C
				
Polar Sky 24C	Nightfall 23C	Indigo 22C	Wild Lupin 21C	
				
Galena 33C	Bronze 30C	Corten 31C	Manganese 32C	

# Club armchair bela rope aluminium

Designer  
Rodolfo Dordoni

Collection  
Bitta

Reference  
KS7000300

3/6

## Maintenance

Clean with mild soap using sponge or cloth. Be gentle while cleaning, do not scrub aggressively the fabric. Once cleaned please make sure you remove soap excess.

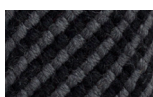
In case of aggressive stains clean with diluted household bleach.

Clean stains promptly. The longer it remains, more difficult will be to remove.

Once cleaned the fabric steam iron the fabric. Just use steam, be carefull NOT placing the iron directly in the fabric it will get damage.

## Frame Colour Options

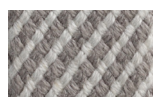
## Bela Rope



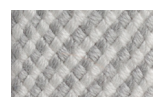
Basalt  
Z01



Shore Line  
Z02



Nimbus  
Z03



Polar White  
Z04



Dry Vine  
Z05



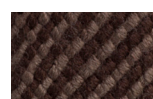
Reed  
Z06



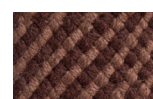
Dusk  
Z07



Riverbed  
Z08



Terra Firma  
Z09



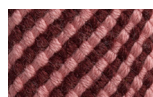
Chesnut  
Z10



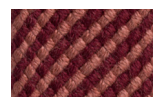
Black Cacao  
Z14



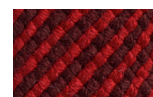
Gypsum  
Z11



Dragon Tree  
Z12



Sumac  
Z13



Madder Root  
Z15



Red Mud  
Z16



Tumeric  
Z19



Champa  
Z20



Charoli  
Z18



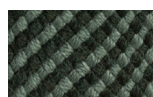
Tamarind  
Z17



Bitter Gourd  
Z21



Foliar  
Z22



Evergreen  
Z23



Sea Grass  
Z25



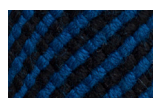
Teal  
Z24



Azur  
Z28



Blue Slate  
Z29



Midnight  
Z30



Lavandin  
Z27



Tree Top  
Z26

# Club armchair bela rope aluminium

Designer  
Rodolfo Dordoni

Collection  
Bitta

Reference  
KS7000300

4/6

## Seat/Back Cushion

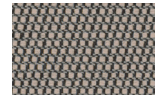
## Terrain Laminate Elements



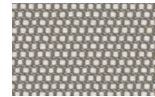
Charcoal  
01L



Cumulus  
02L



Fog  
09L



Porous Grey  
08L



Snowcap  
03L



Moonstone  
07L



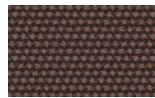
Karakum  
06L



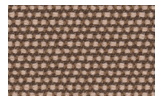
Cambium  
12L



Raku  
11L



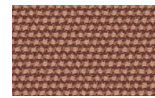
Clove  
13L



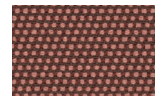
Desert Rose  
14L



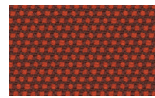
Pink Salt  
15L



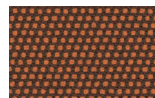
Pacific Dawn  
16L



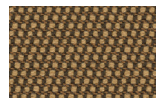
Acer  
17L



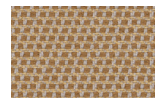
Firetail  
18L



Glowing Ember  
19L



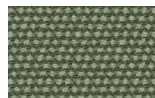
Tiger Eye  
05L



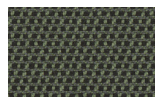
Goldrush  
04L



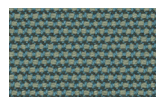
Sea Heart  
22L



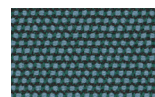
Heath  
21L



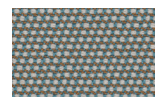
Peppercorn  
20L



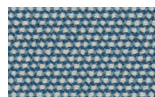
Rock Pool  
23L



Tropic  
24L



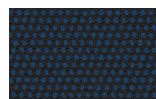
Skylark  
25L



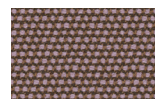
Nautica  
26L



Blue Reef  
27L



Cosmos  
28L



Amethyst  
29L

# Club armchair bela rope aluminium

Designer  
Rodolfo Dordoni

Collection  
Bitta

Reference  
KS7000300

5/6

## Seat & Back Cushion

## Tonale Lino



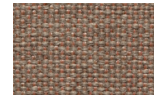
White Chia  
61L-61T



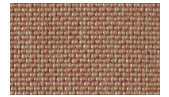
Fennel  
62L-62T



Elwendia  
63L-63T



Brown Mustard  
64L-64T



Kampot  
65L-65T



Fenugreek  
66L-66T

## Seat & Back Cushion

## Tonale Boucle



White Poppy  
81L-81T



Sesame  
82L-82T



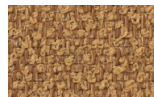
Anise  
83L-83T



Dill  
84L-84T



Allspice Jamaica  
85L-85T



Birds Foot  
86L-86T

## Back Cushion

## Geometric Fabrics



Umbra Brown  
192



Shade Brown  
152



Umbra Blue  
190



Dash Blue  
160



Shade Blue  
150



Umbra Green  
191



Shade Green  
151



Umbra Red  
194



Dash Red  
164



Shade Red  
154



Dots Blue  
140



Dots Light Blue  
145

# Club armchair bela rope aluminium

Designer  
Rodolfo Dordoni

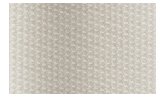
Collection  
Bitta

Reference  
KS7000300

6/6

## Seat & Back Cushion

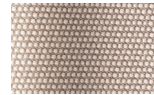
## Terrain Fabrics



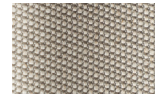
White Cliffs  
290



Dry Sand  
285



Porous Grey  
291



Limestone  
292



Fog  
289



Deer  
286



Wet Sand  
287



Cobblestone  
302



Cyprus Umber  
301



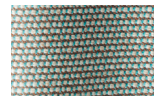
Loam  
297



Charcoal  
293



Arctic  
295



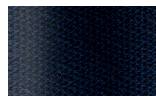
Fjord  
248



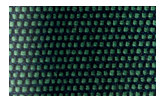
Cerulean  
314



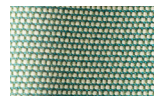
Caribbean  
298



Atlantic  
311



Rainforest  
312



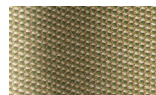
Lagoon  
249



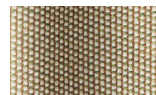
Cedar  
288



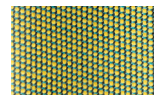
Moss  
296



Olive  
313



Autumn  
315



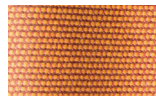
Summer Sky  
317



Golden Sand  
303



Flamma  
304



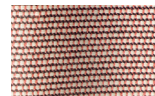
Sunrise  
299



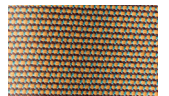
Saffron  
305



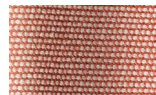
Burnt Sienna  
306



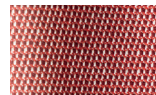
Ash Rose  
294



Cooper  
316



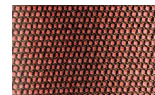
Dusk Pink  
307



Flamingo  
310



Coral  
309



Sandstone  
308