

indoor

# Huma

## Upholstered dining armchair with metal legs / sillón comedor tapizado con patas metálicas

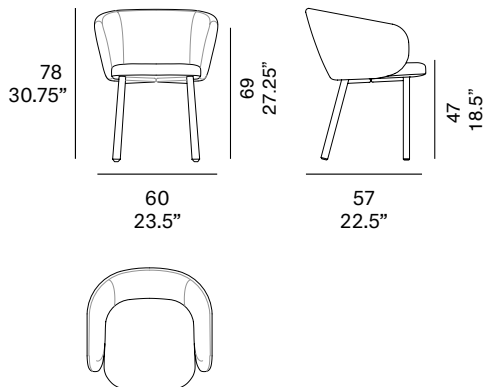
Mario Ruiz, 2015/2021

T071 M



Upholstered dining armchair with metal legs. Backrest comes in steel tube covered with cold-cured moulded polyurethane foam. Upholstered seat and backrest. Possibility of customization through a wide variety of high performance technical fabrics. Plastic protective caps.

Sillón comedor tapizado con patas de metal. La estructura del respaldo es de tubo de acero revestido con espuma flexible de poliuretano. Asiento y respaldo tapizados. Posibilidad de personalización mediante una amplia variedad de tejidos técnicos de altas prestaciones de uso. Tacos protectores de plástico.



### Shipment details

Qty	1 dining armchair (1 box)
Volume	0,34 m <sup>3</sup> / 12 ft <sup>3</sup>
Gross weight	17,5 kg / 38.5 lb
Net weight	13,5 kg / 30 lb
Box dimensions (approx.)	65 x 62 x 83 cm 25,5" x 24,5" x 32,75"
Item dimensions (width x depth x height)	60 x 57 x 78 cm 23.5" x 22.5" x 30.75"
COM (1, 40 - 1,50 m / 54"-59")	2 m / 2.2 yd

### Certifications

EN 16139:2013

indoor

Legs / patas

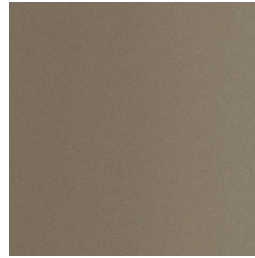
metallic finishes- fine textured



124 FT linen



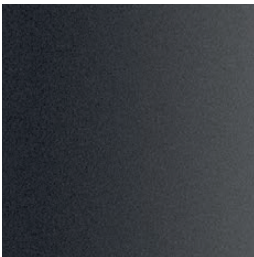
102 FT light grey



110 FT bronze



108 FT oxide

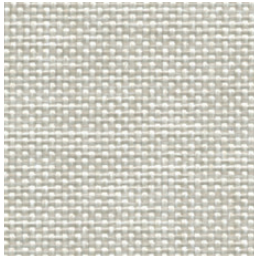


111 FT graphite

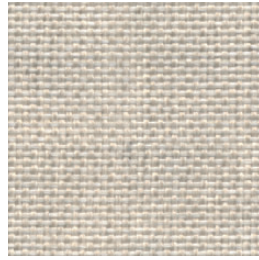
indoor

Cushions / confección

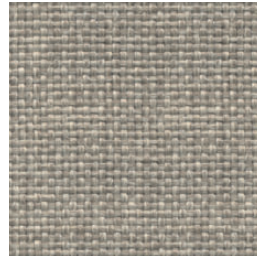
group 31 - dolce Crevin®



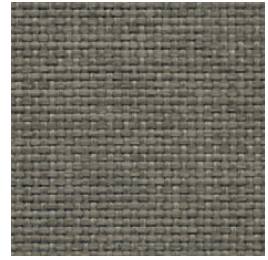
dolce 07



dolce 04



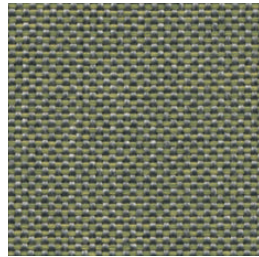
dolce 11



dolce 12



dolce 53

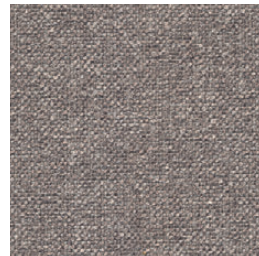


dolce 30

group 31 - ito Crevin®



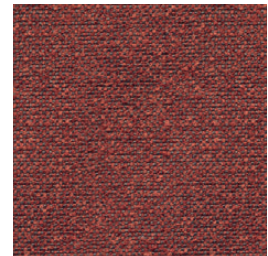
ito 05



ito 18



ito 12



ito 21



ito 20



ito 38



ito 45

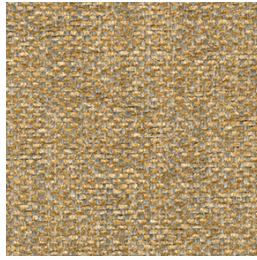
indoor

Cushions / confección

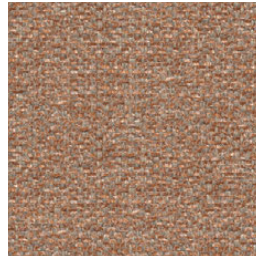
group 31 - salvia Crevin®



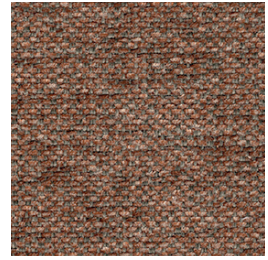
salvia 02



salvia 20



salvia 29



salvia 21



salvia 38

group 31 - sacco Crevin®



sacco 02



sacco 05



sacco 11

group 31 - valencia™ C5 heritage faux leather



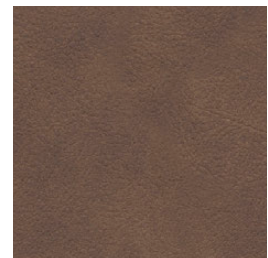
valencia heritage 9050



valencia heritage 9051



valencia heritage 9052



valencia heritage 9055



indoor

Cushions / confección

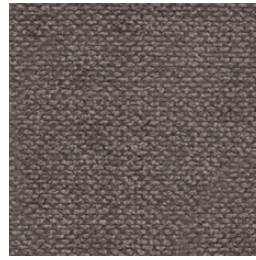
group 32 - velvety Crevin®



velvety 10



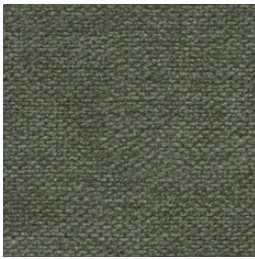
velvety 17



velvety 12



velvety 26



velvety 32

group 32 - indianskop Limonta



indianskop 15



indianskop 02



indianskop 04



indianskop 31



indianskop 46

**expormim**

Expormim S.A.  
Pol. Ind. Jaime I  
46640 Moixent (Valencia) Spain  
+34 962 295 144/5  
export@expormim.com  
www.expormim.com

Expormim USA LLC  
(212) 204-8572  
usa@expormim.com  
www.expormim.com

5/7

indoor

Cushions / confección

group 32 - clusone Limonta



clusone 04



clusone 06



clusone 05

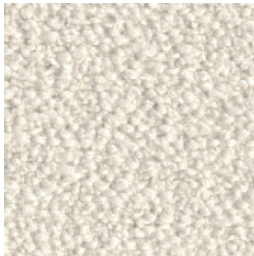


clusone 10



clusone 16

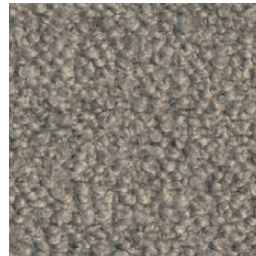
group 32 - ascendent reloaded Carlucci®



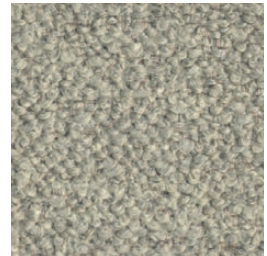
ascendent reloaded 094



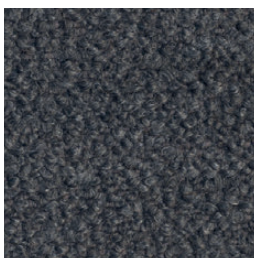
ascendent reloaded 070



ascendent reloaded 071



ascendent reloaded 030



ascendent reloaded 093



ascendent reloaded 022



ascendent reloaded 040

indoor

Cushions / confección

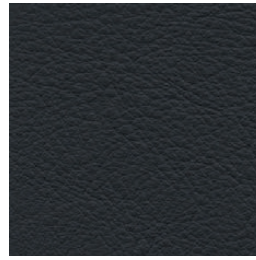
group 33 - elmosoft Elmo® leather



elmosoft 22024



elmosoft 33004



elmosoft 99999