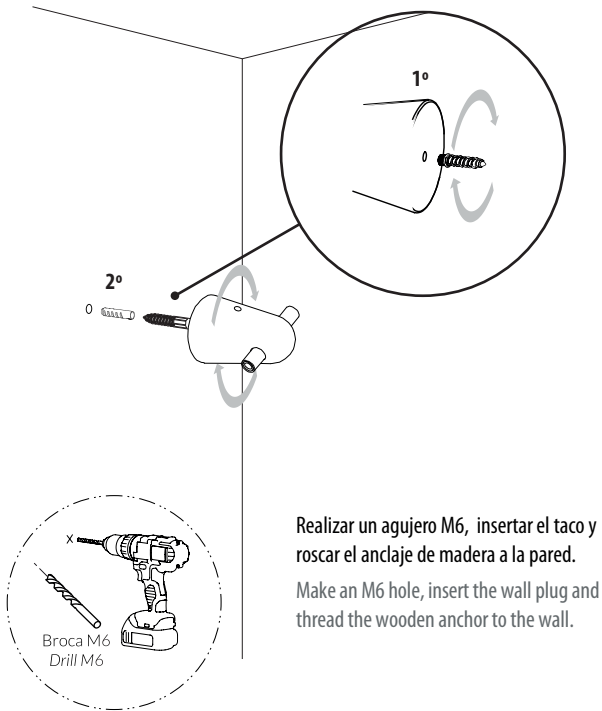


MICRO ANDA

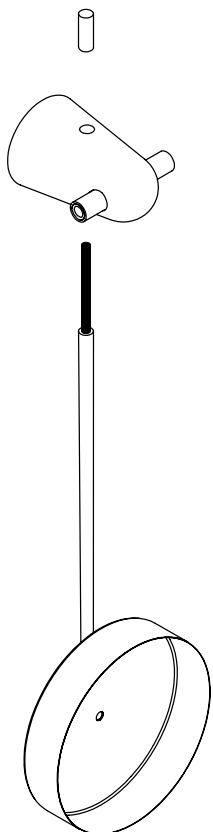
Instrucciones de montaje

Assembly instructions

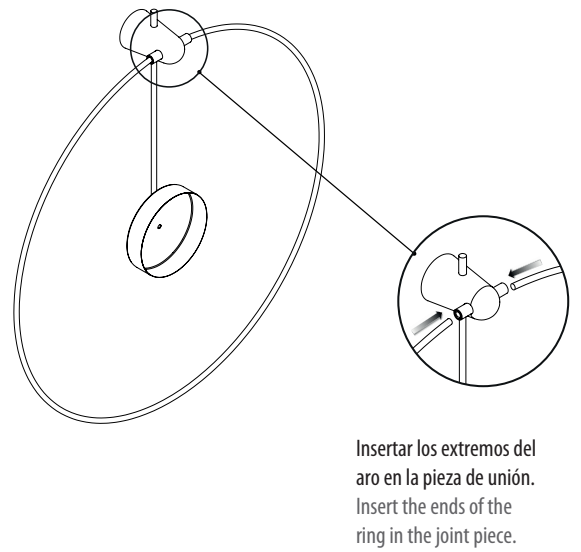
1



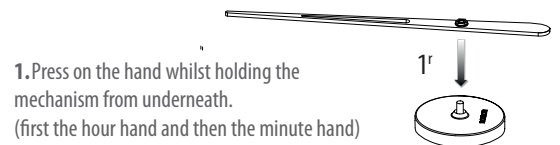
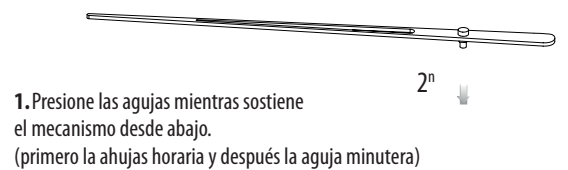
2



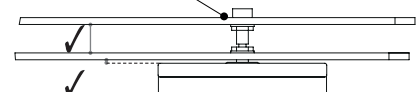
3



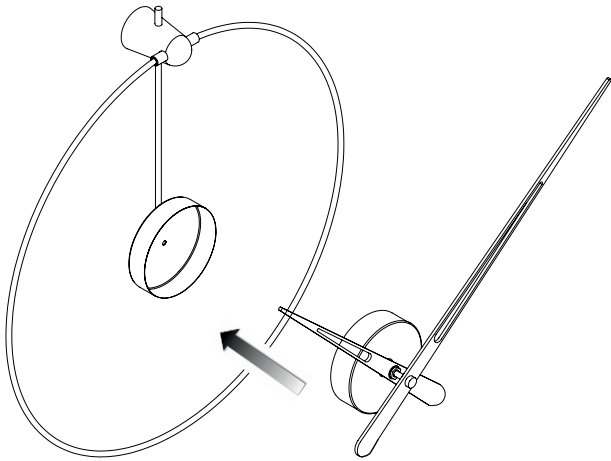
4



ATENCIÓN:
Respetar la correcta posición
de las agujas.
CAUTION:
Respect the correct position
of the hands.



5

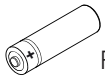


ATENCIÓN:

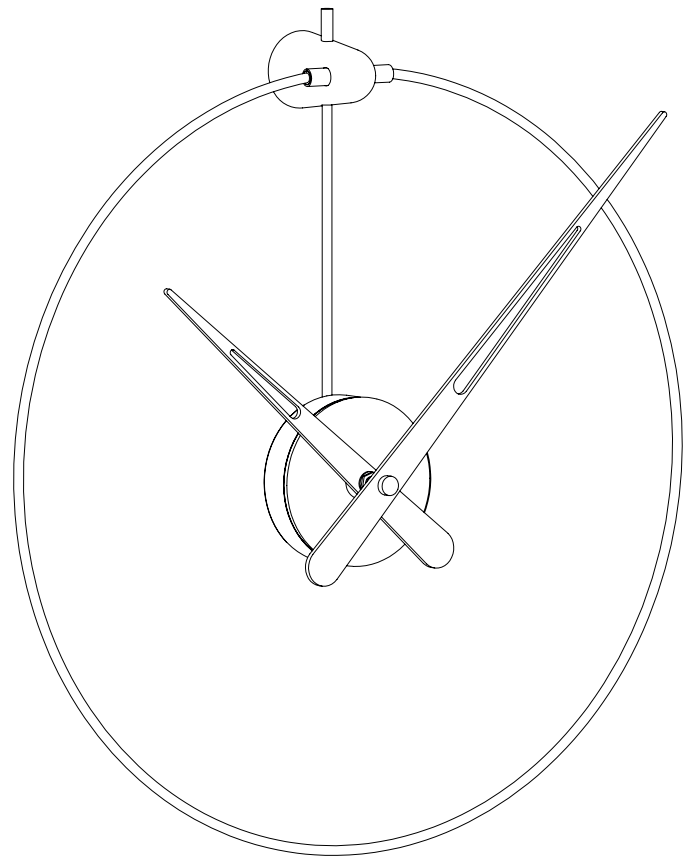
no olvide colocar la pila de 1,5v.

CAUTION:

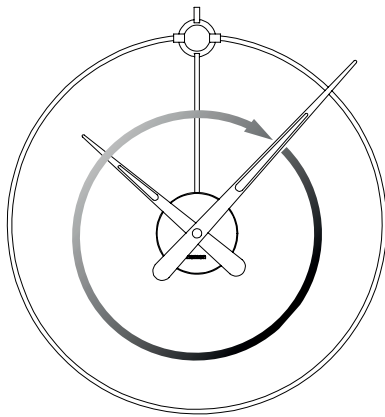
don't forget to set the battery in place.



R6 1,5V



6



Gire cuidadosamente la aguja minuter a en el sentido de las agujas del reloj hasta alcanzar la 12, continúe girando la aguja minuter a hasta alcanzar la hora deseada.

ATENCIÓN: Nunca girar en sentido contrario a las agujas del reloj.

With your index finger, wind the minute (long) hand clockwise until both hands are at 12 o'clock. Then, to set the time, continue to wind the minute hand clockwise until the desired time is reached.

NEVER wind the minute hand in the anti-clockwise direction.