

Duo petra

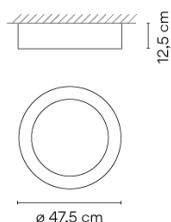
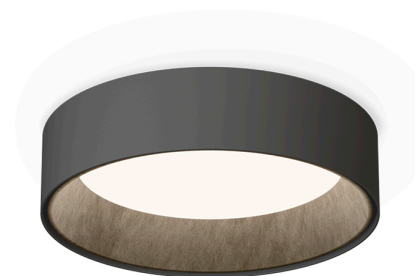
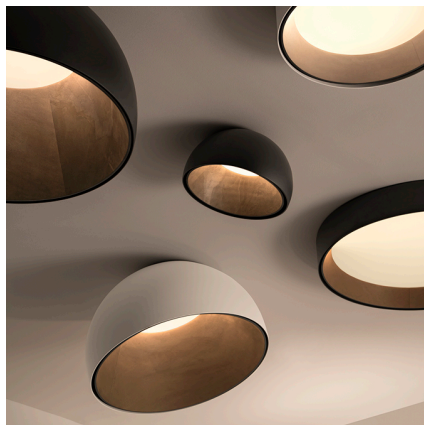
4871

Design By Ramos & Bassols

Duo Petrea is a surface installation ceiling light where its interior natural slate appearance is combined with the technical elegance of its aluminium outer shell.

VIBIA

Model Sheet



Finish

- 93 White
RAL 9016
- 58 Cream
RAL 7044
- 18 Graphite
ADAPTA RF 9913 WX

LED temperature color

2700 K / 3500 K /
Tunable White

Dimming

DALI / PUSH 1-10V DALI /
CASAMBI

Installation type

Surface Canopy

Materials

Inner structure: Slate

Light source

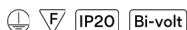
1 x LED PLATE 26W 500mA

LED

CRI>90 2206 lm 98
2700 K / 3500 K / Tunable
White

Driver

Constant Current 500 110~240
V V 50~60 Hz HZ



50-60Hz

Application

Ceiling Lamps

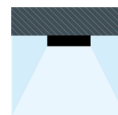
Packaging

1 Box
0.558 m x 0.558 m x 0.255 m
Gross weight 7
Net weight 6
Vol. 0.0793

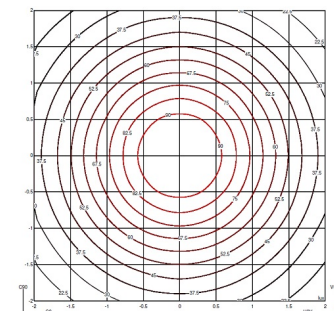
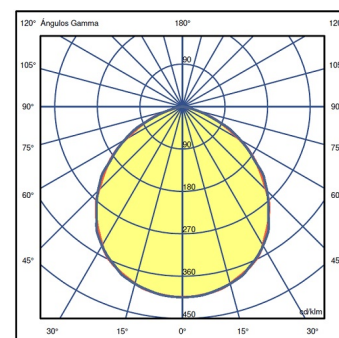
Lighting effect

General

First layer of basic, general illumination



Photometric Data



Efficiency

Coordinate System

Total Flux

Maximum Value

69.505 lm/W
CG
1796.0 lm
404.43 cd/klm

All of our products come with a five-year warranty. Check our legal terms at www.vibia.com/warranty

Vibia Lighting, S.L.U.

Office / Oficina
Progrés 4-6. 08850 Gavà. Barcelona, Spain.

International T +34 934 796 971
Spain / Portugal T +34 934 796 970

customer.service@vibia.com
vibia.com