

Products / Low Tables / Faz Table Base H:50cm

# Faz table base h:50cm

by Ramón Esteve

Faz is a modular collection of outdoor furniture and planters designed by Ramón Esteve for Vondom. He is the architect of harmony, serenity, timelessness and universality, and he has created mineral and emphatic shapes that make Faz a design that contextualizes with homes and installations. An ambience, encircling as a result of the blissful combination of the material and lighting, so that the sole sensation would be its fusion.



# Info

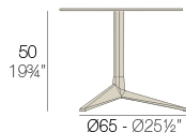
---

## Description

Extruded aluminum tube with cast aluminum base coated with epoxy baked painting. Item suitable for indoor and outdoor use. Table top not included.

Weight: 3.99 Kg

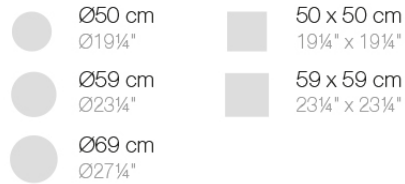
### BASE 3 LEGS - BASE 3 PATAS



fixed top / fijo ref. 54125  
 collapsable top / abatible ref. 54125T  
 fixed for glass / fijo para vidrio ref. 54125V

FAZ BASE MESA Ø65 H50  
 FAZ TABLE BASE Ø25 1/2" H19 3/4"

### TABLE TOPS OPTIONS - OPCIONES SOBRES



# Accessories

---

- **TEMPERED GLASS**

Security temperate Glass, board thickness 10 mm

- **HPL**

HPL black edge

- **NONAME-66100B**

SOLID CORESolidCore

- **NONAME-66101B**

SOLID CORESolidCore

- **NONAME-66102B**

SOLID CORESolidCore

- **NONAME-66106B**

SOLID CORESolidCore

- **NONAME-66107B**

SOLID CORESolidCore

# Finishes

---

## finishes

---

Fixed  
Ref. 54125



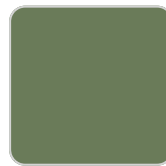
notte blue



mostaza



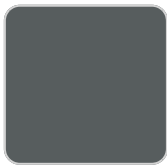
british gray



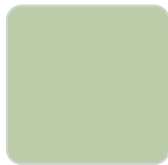
pickle



red



traffic gray



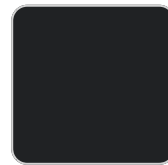
almond



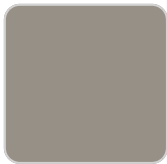
ecru



crema



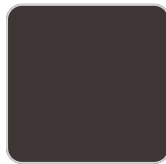
black



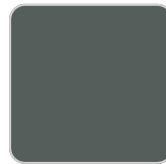
castoro fiber



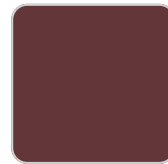
white



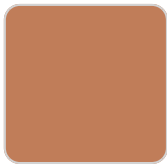
bronze



modo green



purjai red



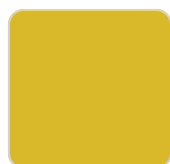
melon

Powder coated aluminum base with non collapsable attachment made of polyamide and fiber glass

COLLAPSIBLE TOP  
Ref. 54125T



notte blue



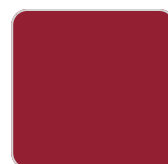
mostaza



british gray



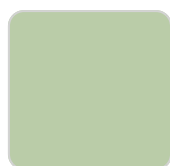
pickle



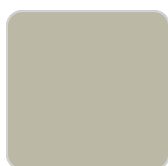
red



traffic gray



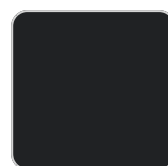
almond



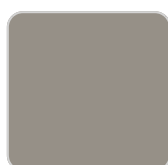
ecru



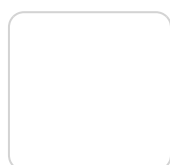
crema



black



castoro fiber



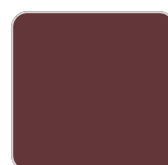
white



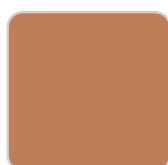
bronze



modo green



purjai red



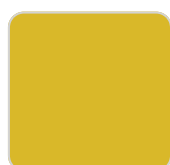
melon

Powder coated aluminum base with 90° collapsable attachment made of polyamide and fiber glass

Fixed glass  
Ref. 54125V



notte blue



mostaza



british gray



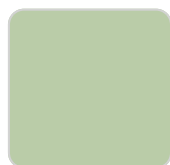
pickle



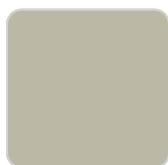
red



traffic gray



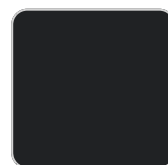
almond



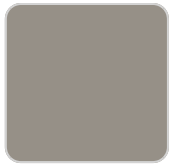
ecru



crema



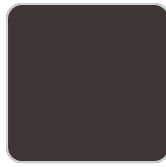
black



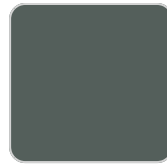
castoro fiber



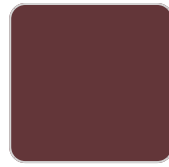
white



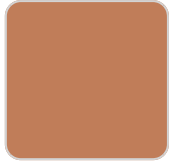
bronze



modo green



purjai red



melon

Powder coated aluminum base with non collapsable aluminum attachment powder coated, made exclusively for our glass tops.

# Ambients

---

