

outdoor

# Lapala

## Hand-woven footstool / banqueta tejida

Lievore Altherr Molina 2015

C590 T



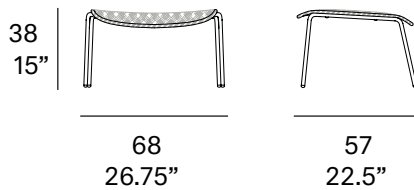
Footstool made of stainless steel tube. Hand-woven seat with high resistance rope 7 mm/0.27" thick. Legs made of lacquered stainless steel tube. Stackable.

Banqueta fabricada en tubo de acero inoxidable. Asiento tejido a mano artesanalmente con cuerda de alta resistencia de 7 mm de sección. Patas fabricadas en tubo de acero inoxidable lacado. Apilable.

### Shipment details

Qty	2 footstools (1 box)
Volume	0,20 m <sup>3</sup> / 7 ft <sup>3</sup>
Gross weight	17 kg / 37 lb
Net weight (x1)	6,5 kg / 14 lb

Item dimensions (width x depth x height)	68 x 57 x 38 cm 26.75" x 22.5" x 15"
---	---



frame / estructura

metallic finishes / metales



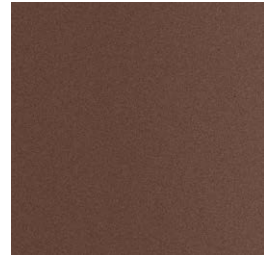
100 white



102 FT light grey  
fine textured



111 FT graphite  
fine textured



108 FT oxide  
fine textured



109 FT champagne  
fine textured



110 FT bronze  
fine textured



113 FT sage  
fine textured

outdoor

rope / cuerda

polyester rope - 7 mm / 0.27" thick



409 taupe



410 SPK  
orange



411 SPK  
dark orange



413 SPK  
oxide



401 black

polypropylene rope - 7 mm / 0.27" thick



420 SPK  
sand



422 SPK  
concrete



424 SPK  
ivy



426 SPK  
turquoise



427 forest  
green