

WEAVE

ARMCHAIR
REF.: 78145



Materials

Powder coated aluminium structure. Rope.

Dimensions

Length x width x height: 81 x 82 x 83 cm/
31,89 x 32, 28 x 32,68 in

Seating height: 40 cm/ 15,75 in

Seating armrests: 56 cm/ 22 in

Weight: 23 kg/ 50,6 lb

Volume: 0,62 m³

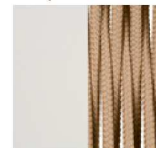
Finish

Weavings: Rope 8 mm Ø.

Taupe Grey
60 with
Taupe Rope



Cream 61
with Nougat
Rope



Taupe Grey 63
with Nougat
Rope



Cushion content

Polyurethane Foam 35Kg HR Density.

Fabric

100% Solution Dyed Acrylic with stain and mildew resistant treatment.

Avoid condensation from hot and humidity. Good oil repellency.

Light fastness 7/8.

Warranty 5 years.

See available fabrics samples.