

indoor

# Armadillo Lounge chair / sillón

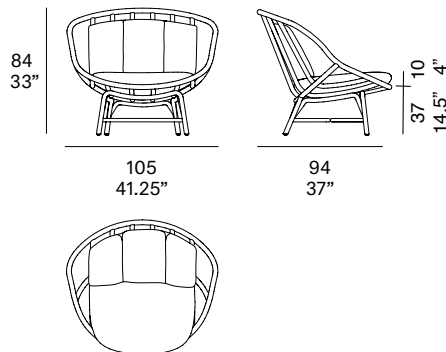
MUT Design, 2020

T030



Lounge chair with structure made of peeled and tinted natural rattan of 34 mm/1.34" diameter. Seat and backrest manufactured in peeled and tinted natural rattan of 32 mm/1.26" diameter. Finished with a three step water-based coating (dye, base coat and top coat) highly resistant to solar radiation thanks to UV filters. Possibility of customization through a wide variety of high performance technical fabrics. Protective caps with removable plastic-felt inserts.

Sillón con estructura en rattan natural pelado y tintado de 34 mm de calibre. Asiento y respaldo fabricados en rattan natural pelado y tintado de 32 mm de calibre. Acabado con recubrimiento en tres fases (tinte, fondo y acabado) con filtros UV que lo hacen altamente resistente a la radiación solar. Los acabados utilizados son en base al agua. Posibilidad de personalización mediante una amplia variedad de tejidos técnicos de altas prestaciones de uso. Tacos protectores reversibles de plástico-fieltro.



## Shipment details

|   |  |
|---|--|
| Qty   | 1 lounge chair (1 box)                     |
| Volume                                      | 1,19 m <sup>3</sup> / 42 ft <sup>3</sup>   |
| Gross weight                                | 21 kg / 46.5 lb                            |
| Net weight                                  | 12 kg / 26.5 lb                            |
| Box dimensions<br>(approx.)                 | 110 x 95 x 88 cm<br>43.25" x 37.5" x 33.5" |
| Item dimensions<br>(width x depth x height) | 105 x 94 x 84 cm<br>41.25" x 37" x 33"     |
| COM<br>(1, 40 - 1,50 m / 54"-59")           | cushions: 2,2 m / 2.4 yd                   |

indoor

Rattan

Natural\_matt



R10 natural

Tinted\_matt



R30 oak



R03 noce



R05 grigio



R23 french grey



R06 verde oliva



R08 azzurro



R09 nero

Tinted\_gloss



R31 cognac



R32 antique brown



R33 alpine green

Lacquered\_matt



R02 bianco



R22 clay



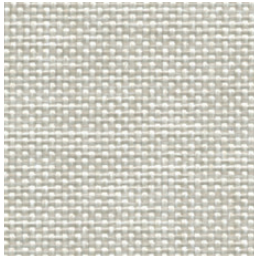
R14 japanese red



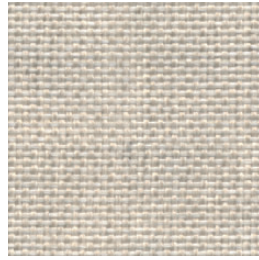
indoor

Cushions / confección

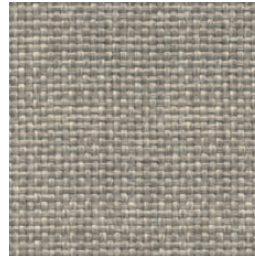
group 31 - dolce Crevin®



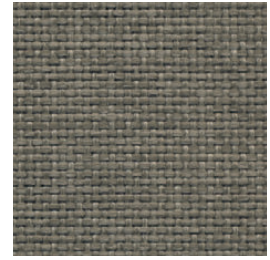
dolce 07



dolce 04



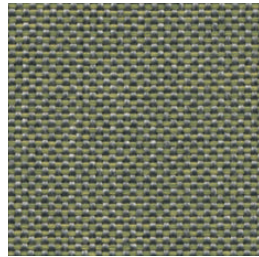
dolce 11



dolce 12



dolce 53

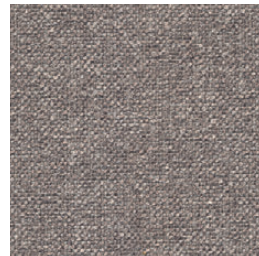


dolce 30

group 31 - ito Crevin®



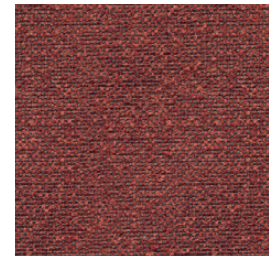
ito 05



ito 18



ito 12



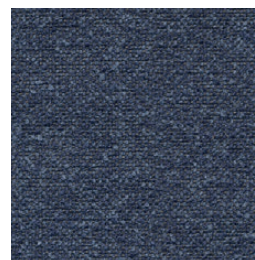
ito 21



ito 20



ito 38



ito 45

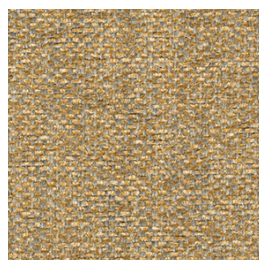
indoor

Cushions / confección

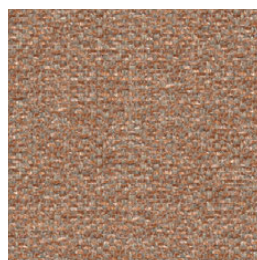
group 31 - salvia Crevin®



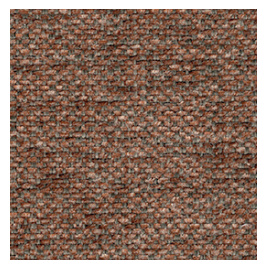
salvia 02



salvia 20



salvia 29



salvia 21

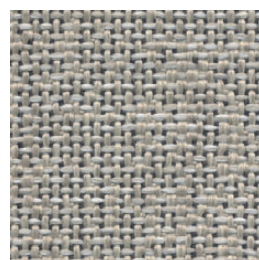


salvia 38

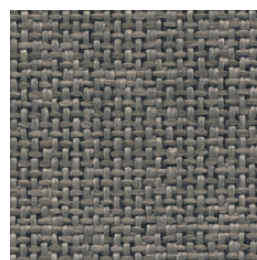
group 31 - sacco Crevin®



sacco 02



sacco 05



sacco 11

group 31 - valencia™ C5 heritage faux leather



valencia heritage 9050



valencia heritage 9051



valencia heritage 9052



valencia heritage 9055

indoor

Cushions / confección

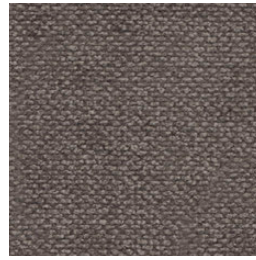
group 32 - velvety Crevin®



velvety 10



velvety 17



velvety 12



velvety 26



velvety 32

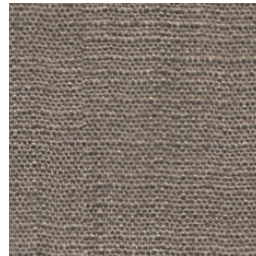
group 32 - indianskop Limonta



indianskop 15



indianskop 02



indianskop 04



indianskop 31



indianskop 46

**expormim**

Expormim S.A.  
Pol. Ind. Jaime I  
46640 Moixent (Valencia) Spain  
+34 962 295 144/5  
export@expormim.com  
www.expormim.com

Expormim USA LLC  
(212) 204-8572  
usa@expormim.com  
www.expormim.com

5/6

indoor

Cushions / confección

group 32 - clusone Limonta



clusone 04



clusone 06



clusone 05

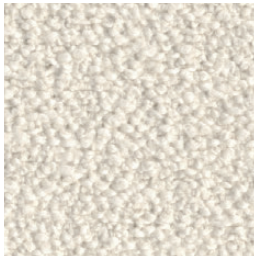


clusone 10

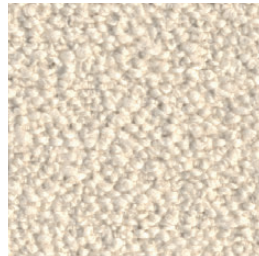


clusone 16

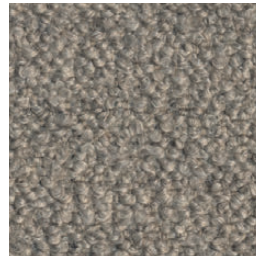
group 32 - ascendent reloaded Carlucci®



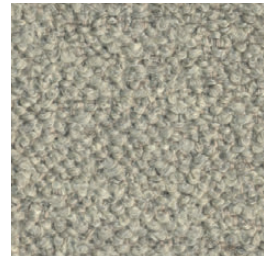
ascendent reloaded 094



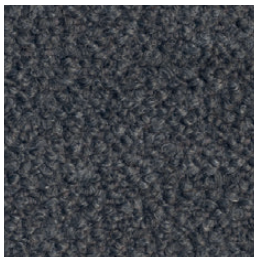
ascendent reloaded 070



ascendent reloaded 071



ascendent reloaded 030



ascendent reloaded 093



ascendent reloaded 022



ascendent reloaded 040