

indoor

Talo indoor

Rectangular dining table / mesa rectangular

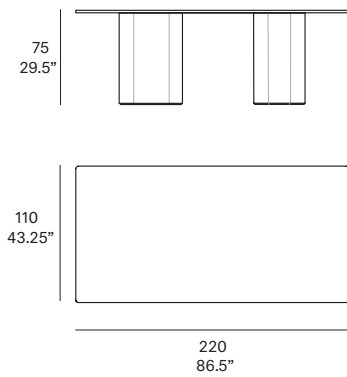
Altherr Désile Park, 2024

T700 220



Tabletop and frame made of solid wood from European oaks with 21 mm/0.83" of section. The collection is also available in lacquered version (MDF) and in European oak veneer. Delivered unassembled.

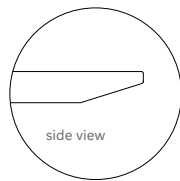
Tapa y estructura fabricada en madera maciza de roble europeo de 21 mm de sección. La colección también está disponible en versión lacada (MDF) y en tablero contrachapado de roble europeo. Se sirven desmontadas.



Shipment details

Qty	1 table (2 boxes)
Volume	0,89 m ³ /31.5 ft ³
Gross weight	240 kg / 529 lb
Net weight	178 kg / 392 lb
Item dimensions (width x depth x height)	220 x 110 x 75 cm 86.6" x 43.3" x 29.5"

Tabletop options:



- lacquered top 21 mm/0.83" thick.
- veneered top 21 mm/0.83" thick.
- solid wood top 21 mm/0.83" thick.

expormim

Expormim S.A.
Pol. Ind. Jaime I
46640 Moixent (Valencia) Spain
+34 962 295 144/5
export@expormim.com
www.expormim.com

Expormim USA LLC
(212) 204-8572
usa@expormim.com
www.expormim.com

1/3

indoor

Tabletop & Frame / tapa y estructura

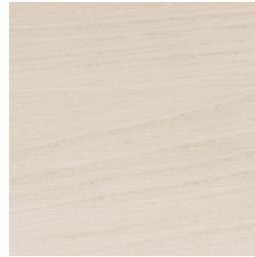
solid wood / madera



W01 natural oak



W03 light oak



W02 white stained



W05 dark stained

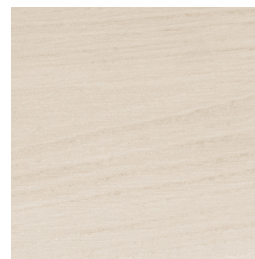
veneered / contrachapado



W01 natural oak



W03 light oak



W02 white stained



W05 dark stained

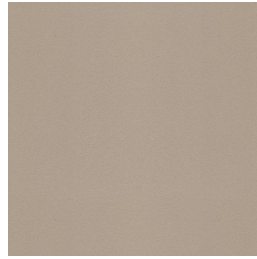
indoor

Tabletop & Frame / tapa y estructura

textured lacquers



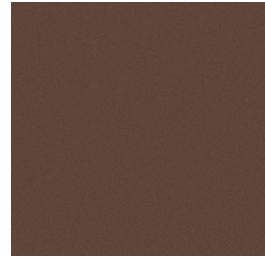
LT24 linen



LT09 champagne



LT10 bronze



LT08 oxide



LT11 graphite

lacquers



L5 taupe