

indoor

# Cask Armchair / sillón

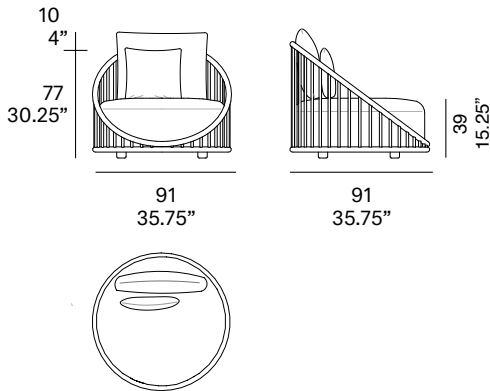
NORM Architects, 2021

T090 B



Armchair with structure made of peeled and tinted natural rattan of 34 mm/1.34" diameter. Backrest manufactured in peeled and tinted natural rattan of 20 mm/0.79" diameter. Finished with a three step water-based coating (dye, base coat and top coat) highly resistant to solar radiation thanks to UV filters. Possibility of customization through a wide variety of high performance technical fabrics. Protective caps. 1 loose cushion 45x45 cm/17.75" x 17.75" included.

Sillón con estructura en rattan natural pelado y tintado de 34 mm de calibre. Respaldo fabricado en rattan natural pelado y tintado de 20 mm de calibre. Acabado con recubrimiento en tres fases (tinte, fondo y acabado) con filtros UV que lo hacen altamente resistente a la radiación solar. Los acabados utilizados son en base al agua. Posibilidad de personalización mediante una amplia variedad de tejidos técnicos de altas prestaciones de uso. Tacos protectores. 1 cojín decorativo de 45x45 cm incluido.



## Shipment details

Qty	1 armchair (1 box)
Volume	0,82 m <sup>3</sup> / 26 ft <sup>3</sup>
Gross weight	25,5 kg / 56 lb
Net weight	20,5 kg / 45 lb
Box dimensions (approx.)	100 x 100 x 82 cm 39.25" x 39.25" x 32.25"
Item dimensions (width x depth x height)	91 x 91 x 77 cm 35.75" x 35.75" x 30.25"
COM (1, 40 - 1,50 m / 54"-59")	cushions: 2,8 m / 3.1 yd loose cushion: 0,5 m / 0.55 yd

## Certifications

EN 16139:2013

expormim

Expormim S.A.  
Pol. Ind. Jaime I  
46640 Moixent (Valencia) Spain  
+34 962 295 144/5  
export@expormim.com  
www.expormim.com

Expormim USA LLC  
(212) 204-8572  
usa@expormim.com  
www.expormim.com

1/6

indoor

Rattan

Natural\_matt



R10 natural

Tinted\_matt



R30 oak



R03 noce



R05 grigio



R23 french grey



R06 verde oliva



R08 azzurro



R09 nero

Tinted\_gloss



R31 cognac



R32 antique brown



R33 alpine green

Lacquered\_matt



R02 bianco



R22 clay



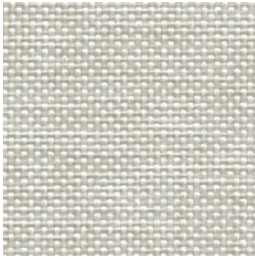
R14 japanese red



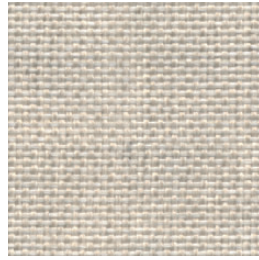
indoor

Cushions / confección

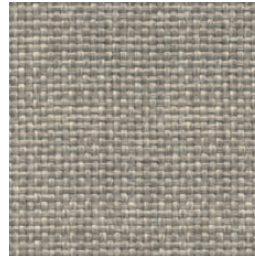
group 31 - dolce Crevin®



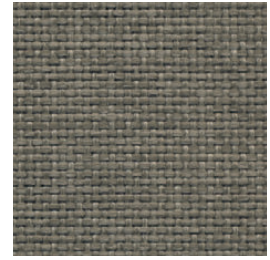
dolce 07



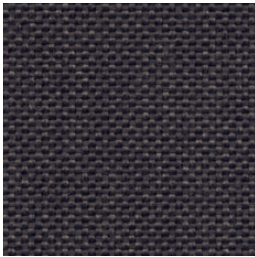
dolce 04



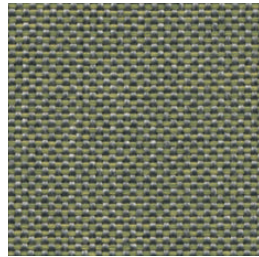
dolce 11



dolce 12



dolce 53

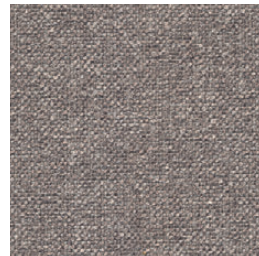


dolce 30

group 31 - ito Crevin®



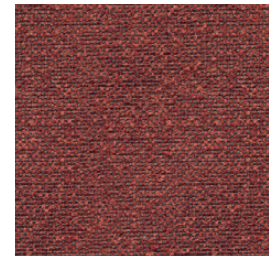
ito 05



ito 18



ito 12



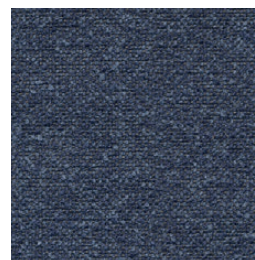
ito 21



ito 20



ito 38



ito 45

indoor

Cushions / confección

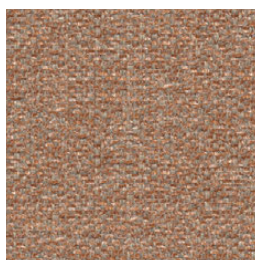
group 31 - salvia Crevin®



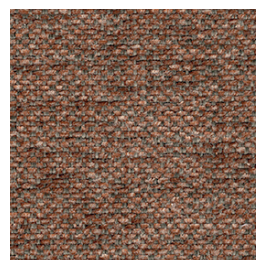
salvia 02



salvia 20



salvia 29



salvia 21



salvia 38

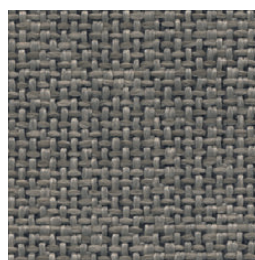
group 31 - sacco Crevin®



sacco 02



sacco 05



sacco 11

group 31 - valencia™ C5 heritage faux leather



valencia heritage 9050



valencia heritage 9051



valencia heritage 9052



valencia heritage 9055

indoor

Cushions / confección

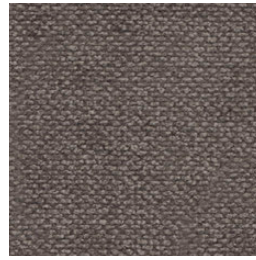
group 32 - velvety Crevin®



velvety 10



velvety 17



velvety 12



velvety 26



velvety 32

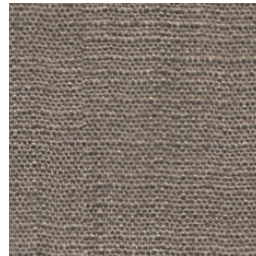
group 32 - indianskop Limonta



indianskop 15



indianskop 02



indianskop 04



indianskop 31



indianskop 46

**expormim**

Expormim S.A.  
Pol. Ind. Jaime I  
46640 Moixent (Valencia) Spain  
+34 962 295 144/5  
export@expormim.com  
www.expormim.com

Expormim USA LLC  
(212) 204-8572  
usa@expormim.com  
www.expormim.com

5/6

indoor

Cushions / confección

group 32 - clusone Limonta



clusone 04



clusone 06



clusone 05

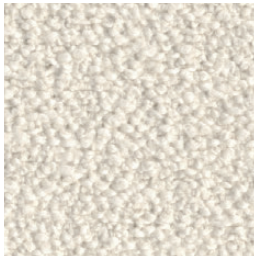


clusone 10

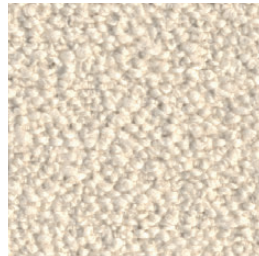


clusone 16

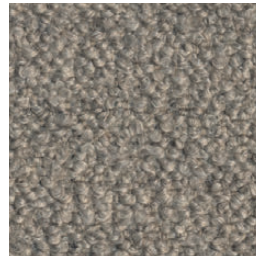
group 32 - ascendent reloaded Carlucci®



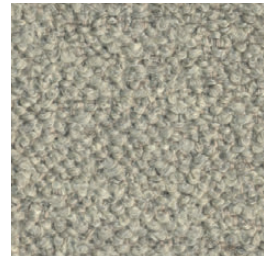
ascendent reloaded 094



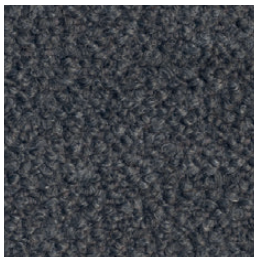
ascendent reloaded 070



ascendent reloaded 071



ascendent reloaded 030



ascendent reloaded 093



ascendent reloaded 022



ascendent reloaded 040