

outdoor

# Talo outdoor

## Rectangular dining table / mesa rectangular

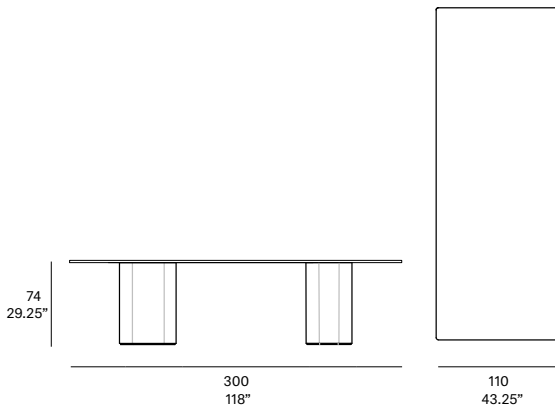
Altherr Désile Park, 2022

C700 300



Dining table with UHPC concrete base made up of natural mineral components and organic fibers (non-metallic), which ensure exceptional resistance to weathering. Tabletop options: HPL Trespa® 13 mm/0.51" thick, FENIX NTM® 12 mm/0.47" thick and Dekton® 8 mm/0.31" thick. Delivered unassembled

Mesa de comedor con estructura de hormigón UHPC compuesto por una mezcla de componentes minerales naturales y fibras orgánicas (no metálicas) que aseguran una excepcional resistencia a la intemperie. Opciones de tablero: HPL Trespa® de 13 mm, FENIX NTM® de 12 mm y Dekton® de 12 mm. Se sirven desmontadas.



### Shipment details

Qty 1 dining table (2 boxes)  
Volume 0,90 m<sup>3</sup> / 31.8 ft<sup>3</sup>

#### HPL / FENIX NTM® Top option

Gross weight 282 kg / 621.5 lb  
Net weight 195 kg / 430 lb

#### Dekton® Top option

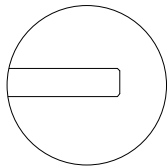
Gross weight 337 kg / 743 lb  
Net weight 250 kg / 551 lb

#### Item dimensions

(width x depth x height) 300 x 110 x 75 cm  
118" x 43.25" x 29.5"

### HEAVY FURNITURE

Tabletop options:



- HPL Trespa® 13 mm/0.51" thick.
- FENIX NTM® 12 mm/0.47" thick.
- Dekton® 12 mm/0.47" thick.

**expormim**

Expormim S.A.  
Pol. Ind. Jaime I  
46640 Moixent (Valencia) Spain  
+34 962 295 144/5  
export@expormim.com  
www.expormim.com

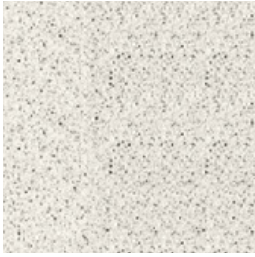
Expormim USA LLC  
(212) 204-8572  
usa@expormim.com  
www.expormim.com

1/4

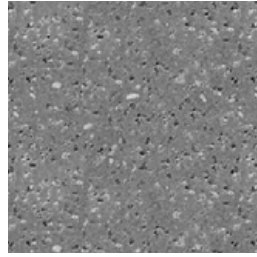
outdoor

frame / estructura

UHPC concrete



C1 stone



C2 slate



C3 terracotta

outdoor

top / tapa

HPL Trespa® - premium



320 silver quartzite - matt



323 natural chalkstone - matt

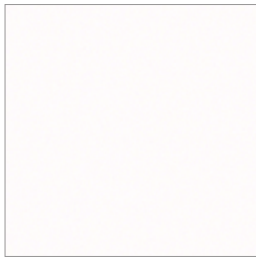


327 titanium bronze - satin



321 italian slate - matt

FENIX NTM®



029 bianco male



720 nero ingo

Dekton® - kraftizen



K1 albarium



K2 argentium



K3 umber



K4 micron

Dekton® - natural



D3 danae



D2 kelya

**expormim**

Expormim S.A.  
Pol. Ind. Jaime I  
46640 Moixent (Valencia) Spain  
+34 962 295 144/5  
export@expormim.com  
www.expormim.com

Expormim USA LLC  
(212) 204-8572  
usa@expormim.com  
www.expormim.com

3/4

# Maintenance and general use. Outdoor

## UHPC concrete

---



**Important: read carefully and keep for future enquiries**

**Importante: lea atentamente y conserve este documento para futuras consultas**

**Advisory:** Expormim S.A. will not assume any responsibility for damages due to normal wear or improper use of the product.

**Advertencia:** Expormim S.A. no se hará responsable de los daños que se produzcan como resultado del desgaste habitual o del uso inadecuado del producto.

**Due to the handmade nature of this material large slub yarns may run sporadically throughout the surface. These slubs are not to be interpreted as imperfections, but as part of the natural character of the material.**

**Debido a la naturaleza artesanal de este material, esporádicamente pueden aparecer grandes flameados por la superficie. Estos flameados no deben interpretarse como imperfecciones, sino como parte del carácter natural del material.**



Talo collection details