

CONTEMPORARY COLLECTIONS

# Evolution<sup>4.2 / beta</sup>

ALEXANDRA

Tras más de 25 años en continua evolución dejamos atrás nuestra antigua marca COLECCIÓN ALEXANDRA para dar la bienvenida a **ALEXANDRA**, de estética elegante y sofisticada.

Cada una de las piezas presentadas en este catálogo mantiene intactos los valores intrínsecos de nuestra marca: tradición artesanal en los procesos de fabricación, gusto por el detalle, alta calidad y nobleza de los materiales empleados. Cada una de nuestras piezas se convierte en un lienzo en blanco para que el cliente pueda dar rienda suelta a su imaginación y plasmar su toque personal a través de las múltiples opciones de acabados, tapizados o pieles.

We are personally committed to continue evolving as a company, after more than 25 years we are leaving behind our old brand COLECCION ALEXANDRA to welcome **ALEXANDRA**, with its elegant and sophisticated appeal.

Each of the pieces presented in this book upholds the intrinsic values of our brand: traditional craftsmanship in the manufacturing processes, taste for detail and high quality and excellence of the materials used. Each of our pieces is a blank canvas on which the customer can give free rein to his imagination and capture his personal touch with a wide choice of finishes, upholstery or leathers.





## 06 LIVING

ATLANTA / TEMPUS / FALCON / COMPASS / ABANO / BLOOMS / DUNE / EOS / BOSTON PURE / TRAVELER / FLUTE / MASTER / GIO / CULT / SEVEN / DENVER / BELLAGIO / TUPÉ / DETROIT / BOWIE / SPOCK / ANNETTE / COSMOPOL / PAUL / TUBULAR / ÁLVARO / MIAMI / YAIZA / IRIS / RINGO / DURBAN / CARONTE / POITIERS / ECLIPSE / NIDO / AXEL

## 128 DINING

MASTER / CARLA / MYKONOS / TANGO / GEORGE / CHELSEA / LYON / ORLEANS / REGENTA / AMIRA / LUNA / LAUREN / VALENTINA / MARCO

## 164 BEDROOM

REBECCA / TRAVELER / COMPASS / MASTER / ORIENT / MERCURY / GRACE / NIMES / TROYANO / VALENTINA / LAUREN

## 236 MAPA DE PRODUCTO. INFORMACIÓN TÉCNICA

PRODUCT MAP. TECHNICAL INFO



# LIV

CONTEMPORARY COLLECTIONS

# LIVING



En este ambiente:

**E-4105/01\***. Sofá ATLANTA. 341 x 106 x 75H | **A-3455/01**. Mesa centro TEMPUS. 135 x 135 x 40H | **S-1075/03**. Sillón FALCON. 77 x 92 x 94H | **A-2960/01**. Mesita auxiliar KENTIA. 85 x 55 x 44H

In this setting:

**E-4105/01\***. ATLANTA sofa. 341 x 106 x 75H | **A-3455/01**. TEMPUS coffee table. 135 x 135 x 40H | **S-1075/03**. FALCON armchair. 77 x 92 x 94H | **A-2960/01**. KENTIA side table. 85 x 55 x 44H

# [Atlanta]

By Jacobo Ventura





by **Jacobo Ventura**

## [Atlanta]

**E-4105/01**  
Sofá 3 plazas ATLANTA (Con 3 mecanismos relax independientes)  
ATLANTA 3-seater sofa (With 3 separate recliner motion devices)  
341 x 106/163 x 75/98H



**E-4110/01**  
Sofá 1 plaza ATLANTA (Con mecanismo relax)  
ATLANTA 1-seater sofa (With recliner motion device)  
123 x 106/163 x 75/98H



by Jacobo Ventura

# [Tempus]



A-3455/01 | Mesa centro TEMPUS | TEMPUS coffee table | 135 x 135 x 40H





by Jacobo Ventura

# [Falcon]



S-1075/03 | Sillón FALCON | FALCON armchair | 77 x 92 x 94H



by **Jacobo Ventura**

# [Compass]

# [Compass]

By Jacobo Ventura

R-0775/01

Consola COMPASS  
COMPASS console  
160 x 55 x 55H  
(como foto / as picture)

R-0777/01

Consola COMPASS  
COMPASS console  
260 x 55 x 55H

R-0725/01

Pedestal COMPASS  
COMPASS pedestal  
53 x 35 x 100H

R-0746/01

Mesa centro COMPASS  
COMPASS coffee table  
130 x 90 x 40H  
(como foto / as picture)

R-0745/01

Mesa centro COMPASS  
COMPASS coffee table  
180 x 120 x 40H

R-0779/01

Mesa centro COMPASS  
COMPASS coffee table  
90 x 90 x 40H

R-0780/01

Estantería COMPASS  
COMPASS bookcase  
80 x 40 x 130H

R-0778/01

Mueble aux. COMPASS  
COMPASS side cabinet  
120 x 45 x 49H

R-0786/01

Mueble TV COMPASS  
COMPASS TV cabinet  
200 x 45 x 49H



by Soraya Pla

[Abano]  
[Blooms]  
[Duno]

En este ambiente:

**A-4405/01.** Sofá ABANO. 290 x 96 x 80H | **S-1070/02.** Sillón BLOOMS.  
90 x 80 x 72H | **A-2990/01.** Mesa centro EOS. 130D x 39H

In this setting:

**A-4405/01.** ABANO sofa. 290 x 96 x 80H | **S-1070/02.** BLOOMS armchair.  
90 x 80 x 72H | **A-2990/01.** EOS coffee table. 130D x 39H





by Soraya Pla

[Abano]



by Soraya Pla

# [Blooms]





by Soraya Pla

# [Duno]

A-4400/01 | Chaise longue DUNO | DUNO chaise longue | 185 x 83 x 72H





by Santiago Sevillano

[Eos]



A-2985/01 | Mesa centro EOS | EOS coffee table | 110 x 110 x 39H

A-2990/01 | Mesa centro EOS | EOS coffee table | 130D x 39H



En este ambiente:

**E-4636/01** Sofá modular BOSTON PURE (Con mecanismo relax). 455 x 102/136 x 78H | **A-4636/01** Sofá modular BOSTON PURE. 455 x 102 x 78H | **R-0706/L25** Mesa centro TRAVELER XL. 142 x 95 x 42H | **A-5020/06** Sillón FLUTE. 120 x 75 x 83H | **A-4635/01** Puff doble BOSTON PURE. 264 x 102 x 64H | **R-0704/PP25** Mueble cocktail bar TRAVELER. 70 x 57 x 147H. *Cajines no incluidos.*

In this setting:

**E-4636/01** BOSTON PURE modular sofa (With recliner motion device). 455 x 102/136 x 78H | **A-4636/01** BOSTON PURE modular sofa. 455 x 102 x 78H | **R-0706/L25** TRAVELER XL coffee table. 142 x 95 x 42H | **A-5020/06** FLUTE armchair. 120 x 75 x 83H | **A-4635/01** BOSTON PURE double pouff. 264 x 102 x 64H | **R-0704/PP25** TRAVELER cocktail bar cabinet. 70 x 54 x 147H. *Cushions not included.*





A-4635/02\* | Puff doble BOSTON PURE | BOSTON PURE double pouff | 264 x 102 x 64H

(\*) Cojines no incluidos / Cushions not included



by Jacobo Ventura

## [Boston Pure]



J-4624/01  
Sofá modular BOSTON PURE (Con mecanismo relax)  
BOSTON PURE modular sofa (With recliner motion device)  
270 x 102 x 78H

Información técnica en pag. 240 / Technical information on page 240

E-4636/02  
Sofá modular BOSTON PURE (Con mecanismo relax)  
BOSTON PURE modular sofa (With recliner motion device)  
455 x 102/136 x 78H

A-4636/02  
Sofá modular BOSTON PURE  
BOSTON PURE modular sofa  
455 x 102 x 78H



# [Traveler]

by Jacobo Ventura





R-0704/PP07 | Mueble cocktail bar TRAVELER | TRAVELER cocktail bar cabinet | 70 x 54 x 147H



by Jacobo Ventura

## [Traveler]



R-0704/PN93 | Mueble cocktail bar TRAVELER | TRAVELER cocktail bar cabinet | 70 x 54 x 147H



by Michele Mantovani

# [Flute]





by Michele Mantovani

[Flute]

En este ambiente:

**A-3255/08** Sofá MASTER L. 390 x 109 x 86H | **S-1955/09** Sillón CULT.  
72 x 79 x 80H | **S-1035/03** Sillón GIO. 71 x 84 x 94H | **A-2810/01**  
Mesa centro DENVER. 110D x 37H | **A-2850/01** Mesa centro SEVEN.  
130 X 80 x 30H | **A-2860/01** Mesita auxiliar SEVEN. 45D x 50H

In this setting:

**A-3255/08** MASTER L sofa. 390 x 109 x 86H | **S-1955/09** CULT  
armchair. 72 x 79 x 80H | **S-1035/03** GIO armchair. 71 x 84 x 94H |  
**A-2810/01** DENVER coffee table. 110D x 37H | **A-2850/01** SEVEN coffee  
table. 130 X 80 x 30H | **A-2860/01** SEVEN side table. 45D x 50H





by Jacobo Ventura

## [Master]

**A-3250/09**  
Sofá MASTER M  
MASTER M sofa  
280 x 109 x 86H  
(Como foto / As picture)

**A-3255/09**  
Sofá MASTER L  
MASTER L sofa  
390 x 109 x 86H





[Gio]



by Jacobo Ventura

[Cult]

# [Seven]

**A-2860/02**

Mesita auxiliar SEVEN  
SEVEN side table  
45D x 50H

**A-2855/02**

Mesa centro SEVEN  
SEVEN coffee table  
110D x 30H

**A-2850/01**

Mesa centro SEVEN  
SEVEN coffee table  
130 X 80 x 30H

**A-2860/01**

Mesita auxiliar SEVEN  
SEVEN side table  
45D x 50H





**A-2865/03**  
Velador SEVEN  
SEVEN side table  
60D x 57H

**A-2870/01**  
Mesa apoyo SEVEN  
SEVEN support table  
55D x 59H



[Seven]



**A-2825/01**  
Mesita auxiliar DENVER  
DENVER side table  
50 x 50 x 45H

**A-2815/01**  
Mesa centro DENVER  
DENVER coffee table  
120 x 120 x 37H

**A-2820/01**  
Mesa centro DENVER  
DENVER coffee table  
140 x 70 x 37H

**A-2940/10**  
Mesita auxiliar DENVER  
DENVER side table  
55D x 57H

**A-2810/01**  
Mesa centro DENVER  
DENVER coffee table  
110D x 37H

by Jacobo Ventura

**[Denver]**

En este ambiente:

**A-4230/01** Sofá modular BELLAGIO. 505 x 325 x 90H | **A-3311/02** Mesa centro DETROIT XL. 200 x 120 x 43H | **S-1032/02** Sillón TUPÉ. 75 x 82 x 79H | **A-2830/02** Mesita auxiliar DENVER. 55D x 45H  
*Cajines no incluidos.*

In this setting:

**A-4230/01** BELLAGIO modular sofa. 505 x 325 x 90H | **A-3311/02** DETROIT XL coffee table. 200 x 120 x 43H | **S-1032/02** TUPÉ armchair. 75 x 82 x 79H | **A-2830/02** DENVER side table. 55D x 45H  
*Cushions not included.*





## [Bellagio]

by Enrique Marti

A-4220/01 | Sofá modular BELLAGIO | BELLAGIO modular sofa | 430 x 105 x 90H

Información técnica en pag. 239 / Technical information on page 239



**A-4231/01**  
Sofá modular BELLAGIO  
BELLAGIO modular sofa  
240 x 105 x 90H

by Enrique Martí

# [Bellagio]

Información técnica en pag. 239 / Technical information on page 239





by Jacobo Ventura

# [Detroit]

**A-3311/01**  
Mesa centro DETROIT XL  
DETROIT XL coffee table  
200 x 120 x 43H  
(como foto / As picture)

**A-3310/01**  
Mesa centro DETROIT  
DETROIT coffee table  
120 x 120 x 43H







by Jacobo Ventura

[Tupé]

En este ambiente:

**A-4720/04** Sofá BOWIE L. 300 x 110 x 75H  
**A-2855/01** Mesa centro SEVEN. 110D X 30H  
**A-3400/04** Mesa centro ANNETTE. 120D x 40H  
**A-3410/02** Mesita auxiliar ANNETTE. 50D x 60H  
**S-1025/03** Sillón SPOCK. 83 x 83 x 107H  
*Cojines no incluidos*

In this setting:

**A-4720/04** BOWIE L sofa. 300 x 110 x 75H  
**A-2855/01** SEVEN coffee table. 110D X 30H  
**A-3400/04** ANNETTE coffee table. 120D x 40H  
**A-3410/02** ANNETTE side table. 50D x 60H  
**S-1025/03** SPOCK armchair. 83 x 83 x 107H  
*Cushions not included*





by Estudi{H}Ac

# [Annette]

**A-3410/02**  
 Mesita auxiliar ANNETTE  
 ANNETTE side table  
 50D x 60H

**A-3405/03**  
 Mesita auxiliar ANNETTE  
 ANNETTE side table  
 80D x 45H

**A-3400/01**  
 Mesa centro ANNETTE  
 ANNETTE coffee table  
 120D x 40H

**A-3400/03**  
 Mesa centro ANNETTE  
 ANNETTE coffee table  
 120D x 40H





by Jacobo Ventura

[Spock]



by **Jacobo Ventura**

# [Bowie]

**A-4720/01**  
Sofá BOWIE L  
BOWIE L sofa  
300 x 110 x 75H  
(Como foto / As picture)

**A-4722/01**  
Sofá BOWIE M  
BOWIE M sofa  
250 x 110 x 75H





## [Bowie]

by **Jacobo Ventura**

### **A-4725/02\***

Sofá BOWIE STRIPED L  
BOWIE STRIPED L sofa  
300 x 110 x 75H  
(Como foto / As picture)

### **A-4726/04**

Sofá BOWIE STRIPED M  
BOWIE STRIPED M sofa  
250 x 110 x 75H

### **A-3310/KWXX**

Mesa centro DETROIT  
DETROIT coffee table  
120 x 120 x 43H

En este ambiente:

**E-4535/01** Sofá modular COSMOPOL. 364 x 170 x 78H | **A-2635/02** Mesa centro TUBULAR. 121 x 101 x 43 | **A-5025/95** Sillón PAUL. 94 x 71 x 79H.  
Cojines no incluidos.

In this setting:

**E-4535/01** COSMOPOL modular sofa. 364 x 170 x 78H | **A-2635/02** TUBULAR coffee table. 121 x 101 x 43H | **A-5025/95** PAUL armchair. 94 x 71 x 79H.  
Cushions not included.





by **Jacobo Ventura**

# [Cosmopol]

**E-4510/06**  
Sofá 3 plazas COSMOPOL (Con 3 mecanismos relax independientes)  
COSMOPOL 3-seater sofa (With 3 separate recliner motion devices)  
284 x 110 x 78H

Información técnica en pag. 241 / Technical information on page 241



**A-2440/93** | Revistero COSMOPOL | COSMOPOL magazine bag | 43 x 30H





by Estudi{H}Ac

**[Paul]**



# [Álvaro]

by Juan Robles



# [Tubular]

by Jacobo Ventura

En este ambiente:

**A-4710/02** Sofá MIAMI L con capitoné. 290 x 108 x 81H | **A-4712/02** Sofá MIAMI M con capitoné. 240 x 108 x 81H | **S-1025/07** Sillón SPOCK. 83 x 83 x 107H | **A-3360/01** Mesa centro YALZA. 130 x 80 x 37H | **S-1520/04** Bargeño IRIS. 128 x 51 x 171H  
*Cojines no incluidos.*

In this setting:

**A-4710/02** MIAMI L sofa with deep-buttoning. 290 x 108 x 81H | **A-4712/02** MIAMI M sofa with deep-buttoning. 240 x 108 x 81H | **S-1025/07** SPOCK armchair. 83 x 83 x 107H | **A-3360/01** YALZA coffee table. 130 x 80 x 37H | **S-1520/04** IRIS high sideboard. 128 x 51 x 171H  
Cushions not included





by Jacobo Ventura

## [Miami]

**A-4710/01**  
Sofá MIAMI L  
MIAMI L sofa  
290 x 108 x 81H  
(Como foto / As picture)

**A-4712/01**  
Sofá MIAMI M  
MIAMI M sofa  
240 x 108 x 81H



by **Jacobo Ventura**

## [Yaiza]

A-3360/01 | Mesa centro YAIZA | YAIZA coffee table | 130 x 80 x 37H



by Jacobo Ventura

# [Iris]





CONTEMPORARY COLLECTIONS

# LUXURY HOME THEATRE SEATING

En Alexandra somos conscientes que crear un espacio de entretenimiento único en casa puede ser un desafío. Esto nos ha llevado a poner el foco en diseñar y fabricar sofás relax que aúnen estilo, comodidad y plena funcionalidad.

At Alexandra, we know that creating a unique entertainment space at home can be a challenge. We are focused on choosing home theatre sofas that exemplify both style and cosiness.

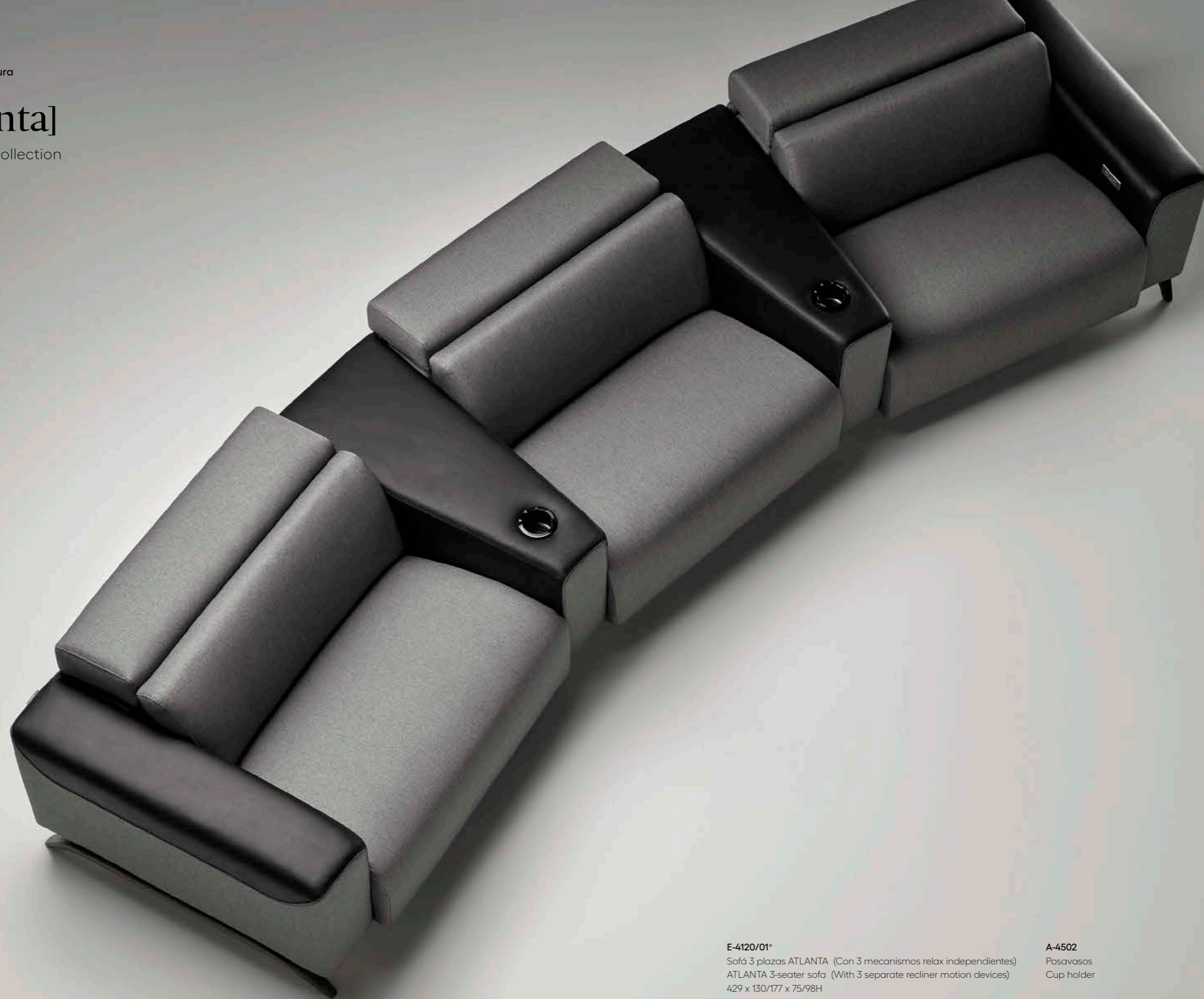
Descubra la colección completa en:  
[www.coleccionalexandra.com](http://www.coleccionalexandra.com)

Explore the entire collection at:  
[www.coleccionalexandra.com](http://www.coleccionalexandra.com)

by Jacobo Ventura

# [Atlanta]

relax sofa collection



**E-4120/01\***

Sofá 3 plazas ATLANTA (Con 3 mecanismos relax independientes)  
ATLANTA 3-seater sofa (With 3 separate recliner motion devices)  
429 x 130/177 x 75/98H

**A-4502**

Posavasos  
Cup holder

(\* Posavasos no incluidos / Cup holders not included)





En este ambiente:

**E-4123/01\***. Sofá modular ATLANTA. 224 x 106 x 75H | **E-4122/01\***. Sofá modular ATLANTA. 426 x 106 x 75H | **R-0705/D01**. Mueble TV TRAVELER. 240 x 47 x 58H | **A-2960/01**. Mesita auxiliar KENTIA. 85 x 55 x 44H

(\*) Posavasos incluidos

In this setting:

**E-4123/01\***. ATLANTA modular sofa. 224 x 106 x 75H | **E-4122/01**. ATLANTA modular sofa. 426 x 106 x 75H | **R-0705/D01**. TRAVELER TV cabinet. 240 x 47 x 58H | **A-2960/01**. KENTIA side table. 85 x 55 x 44H

(\*) Cup holders included



by Jacobo Ventura

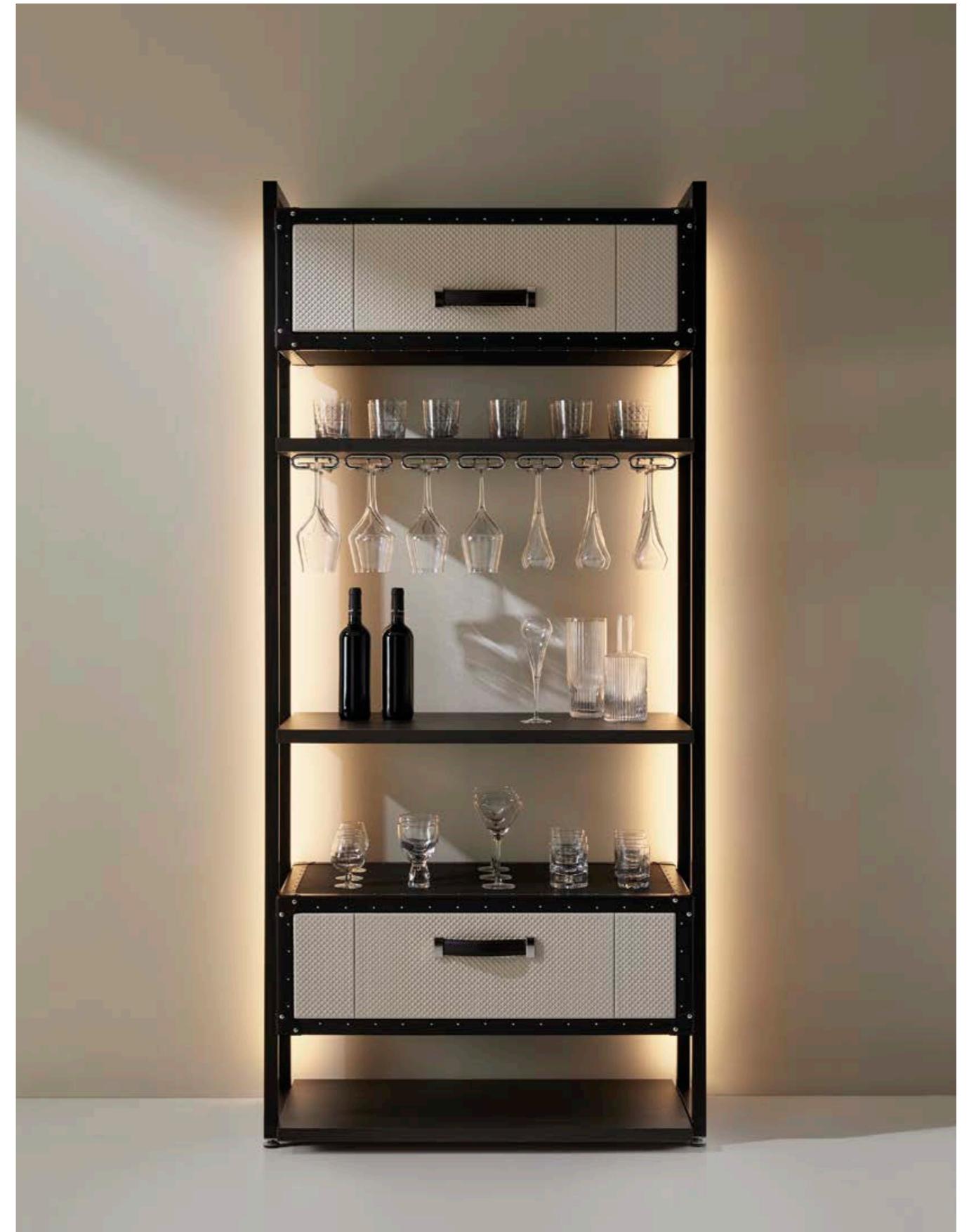
# [Traveler]

R-0975/D21  
Aparador TRAVELER  
TRAVELER sideboard  
240 x 55 x 76H



by Jacobo Ventura

# [Traveler]



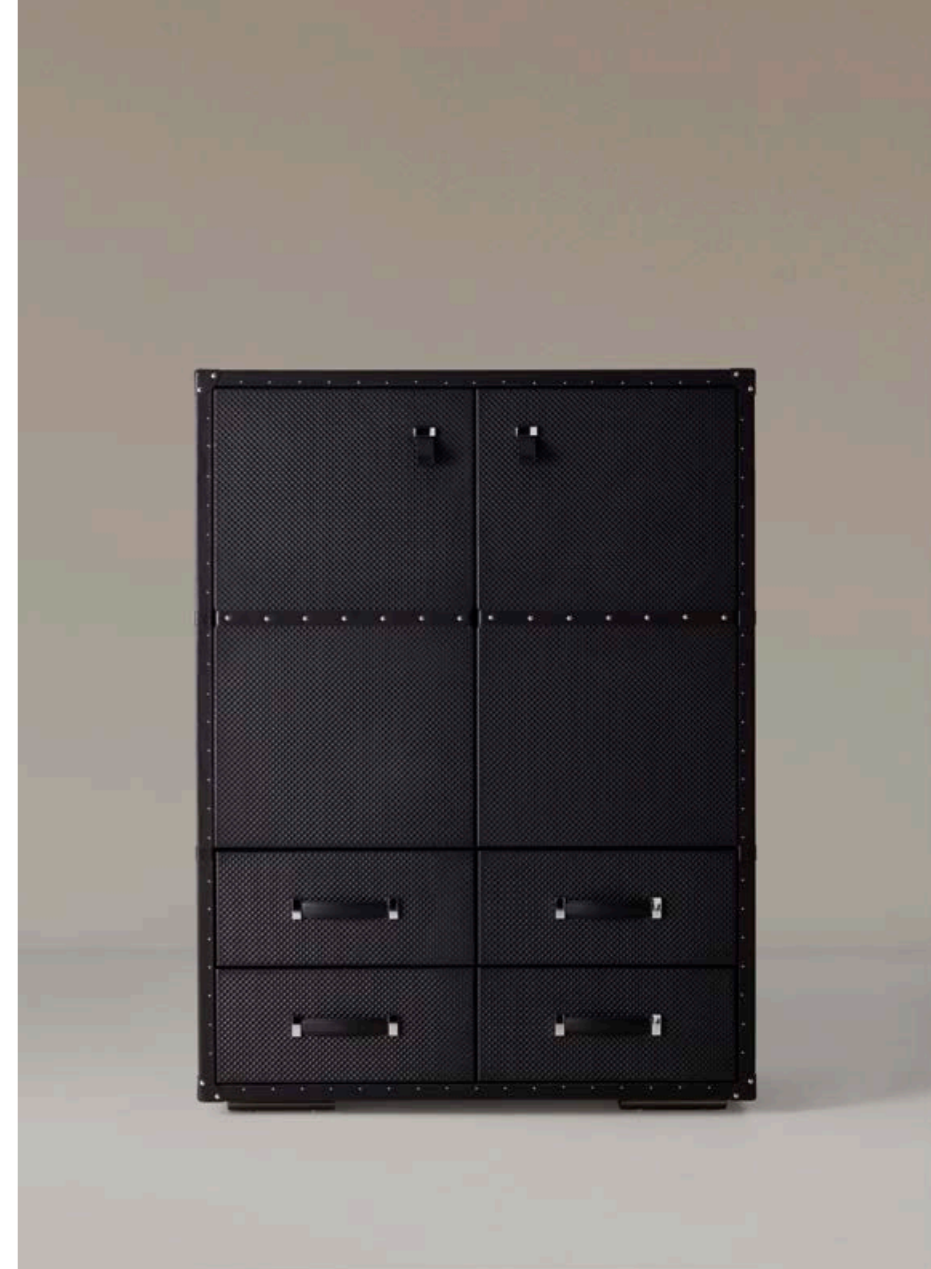


R-1020/D93 | Armario cocktail bar TRAVELER | TRAVELER cocktail bar cabinet | 115 x 50 x 155H



by Jacobo Ventura

(\*) Con luz LED RGB interior / With interior RGB LED lighting.



# [Traveler]



by Jacobo Ventura

# [Traveler]



R-0980/D91  
Armario TRAVELER M  
TRAVELER M cabinet  
70 x 50 x 155H

R-0985/L90  
Armario TRAVELER L  
TRAVELER L cabinet  
115 x 50 x 155H



(\*) Nevera y cafetera no incluidas / Mini fridge and coffee machine not included.  
 Dimensiones espacio nevera / Interior space for mini fridge: 43 x 49 x 57H  
 Dimensiones espacio cafetera / Interior space for coffee machine: 64 x 49 x 53H



by Jacobo Ventura

## [Traveler]

**R-1025/PP25**  
 Coffee station TRAVELER  
 TRAVELER coffee station  
 70 x 71 x 147H

**R-1025/DN01**  
 Coffee station TRAVELER  
 TRAVELER coffee station  
 70 x 71 x 147H

**G-0100**  
 Nevera  
 Mini fridge  
 38 x 38 x 47H



by Jacobo Ventura

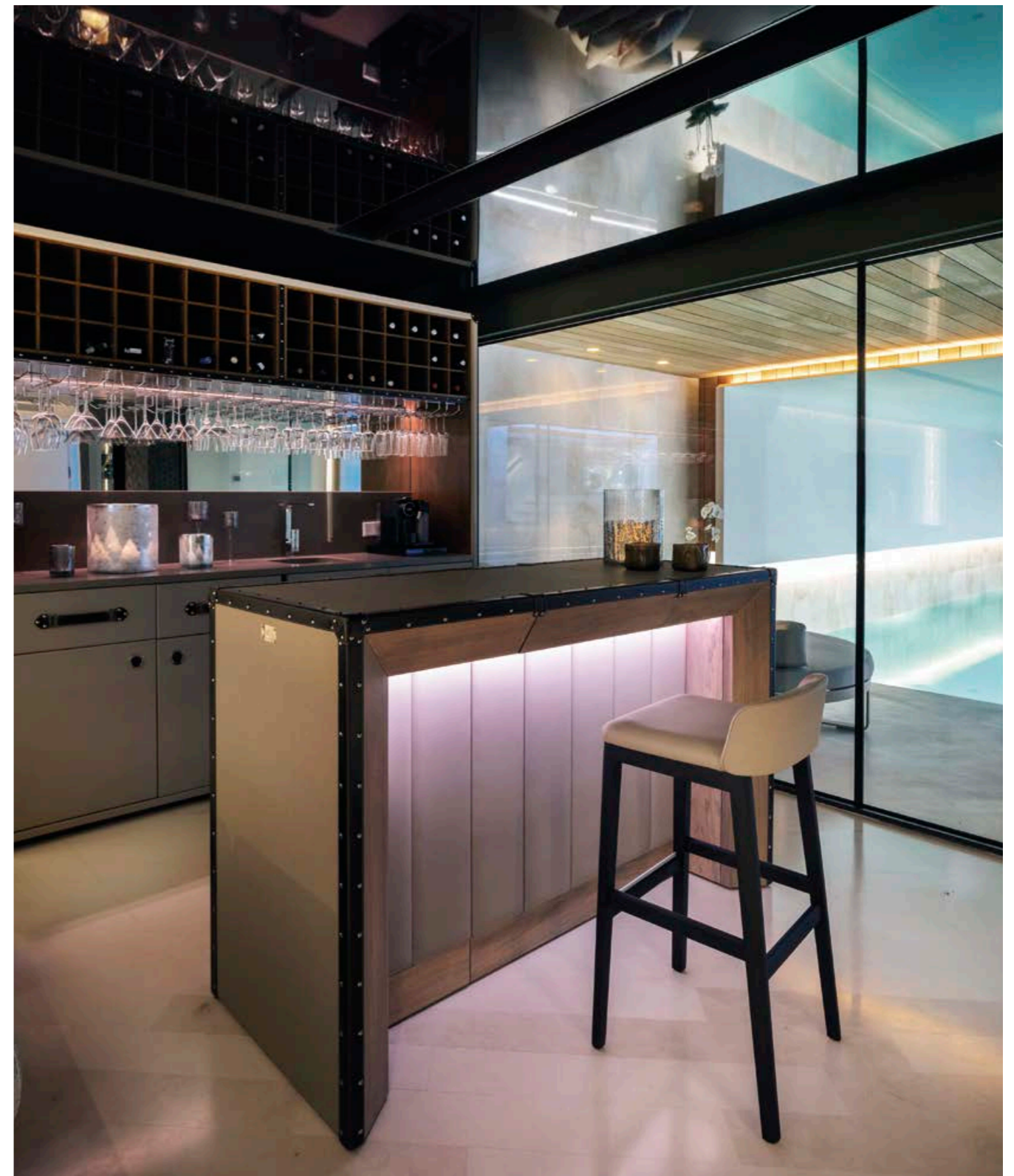
# [Compass]

**A-0892**  
COMPASS  
Barra bar (módulo lateral izq.)  
Bar counter (Left side unit)  
55 x 66 x 110H

**A-0891**  
COMPASS  
Barra bar (módulo central)  
Bar counter (Center unit)  
60 x 66 x 110H

**A-0890**  
COMPASS  
Barra bar (módulo lateral dcho.)  
Bar counter (Right side unit)  
55 x 66 x 110H

**A-0896**  
Iluminación LED  
LED lighting  
170 cm





by Jacobo Ventura

# [Compass]

**R-0865/01**

Mesa billar COMPASS  
COMPASS pool table  
256 x 144 x 77H

**R-0875/01**

Mesa billar COMPASS  
COMPASS pool table  
232 x 132 x 77H

**R-0870/01**

Mesa billar COMPASS  
COMPASS pool table  
282 x 155 x 77H  
(Como foto / As picture)





En este ambiente:

**A-4507/06.** Chaise longue 1 brazo COSMOPOL. 102 x 170 x 78H | **A-4513/06.** Módulo central COSMOPOL. 80 x 110 x 78H | **A-4508/06.** Chaise longue 1 brazo COSMOPOL. 102 x 170 x 78H | **E-4512/07\***. Sofá 1 plaza COSMOPOL. 124 x 110 x 78H | **E-4513/07\***. Módulo central COSMOPOL. 80 x 110 x 78H | **E-4528/07\***. Sofá 1 plaza COSMOPOL. 102 x 110 x 78H. *Cojines no incluidos*

In this setting:

**A-4507/06.** COSMOPOL 1 arm chaise longue. 102 x 170 x 78H | **A-4513/06.** COSMOPOL central unit. 80 x 110 x 78H | **A-4508/06.** COSMOPOL 1 arm chaise longue. 102 x 170 x 78H | **E-4512/07\***. COSMOPOL 1-seater sofa. 124 x 110 x 78H | **E-4513/07\***. COSMOPOL central unit. 80 x 110 x 78H | **E-4528/07\***. COSMOPOL 1-seater sofa. 102 x 110 x 78H. *Cushions not included*

by **Jacobo Ventura**

# [Cosmopol]

relax sofa collection



**E-4512/03**  
Sofá 1 plaza COSMOPOL (Con mecanismo eléctrico relax)  
COSMOPOL 1-seater sofa (With relax motion device)  
124 x 110 x 78H

Información técnica en pag. 241 / Technical information on page 241



by Jacobo Ventura

# [Nido]



by Jacobo Ventura

[Axel]

(\*) Nevera y cafetera no incluidas / Mini fridge and coffee machine not included.  
 Dimensiones espacio nevera / Interior space for mini fridge: 42 x 41, 5 x 54H  
 Dimensiones espacio cafetera / Interior space for coffee machine: 34 x 41, 5 x 50H

R-1015/L404\*  
 Coffee station AXEL  
 AXEL coffee station  
 73 x 67 x 148H

G-0100  
 Nevera  
 Mini fridge  
 38 x 38 x 47H



# DINING

CONTEMPORARY COLLECTIONS

# DINING

En este ambiente:

**A-3191/0128** Mesa comedor MASTER. 240 x 120 x 74H

**A-3910/28** Silla comedor CARLA. 56 x 64 x 81H

**A-3190/0128** Aparador MASTER. 180 x 48,5 x 74H

In this setting:

**A-3191/0128** MASTER dining table. 240 x 120 x 74H

**A-3910/28** CARLA dining chair. 56 x 64 x 81H

**A-3190/0128** MASTER sideboard. 180 x 48,5 x 74H





by Jacobo Ventura

## [Carla]

# [Master]

By Jacobo Ventura







En este ambiente:

**A-3195/01** Mesa comedor MYKONOS. 240 x 110 x 74H

**A-3915/02** Silla comedor TANGO. 54,5 x 59,5 x 80H

**A-4835/01** Mueble bar GEORGE. 140 x 54 x 200H

In this setting:

**A-3195/01** MYKONOS dining table. 240 x 110 x 74H

**A-3915/02** TANGO dining chair. 54,5 x 59,5 x 80H

**A-4835/01** GEORGE bar cabinet. 140 x 54 x 200H



by **Jacobo Ventura**

# [Tango]

**A-3915/02**  
Silla comedor TANGO  
TANGO dining chair  
54,5 x 59,5 x 80H

**A-3920/02**  
Silla comedor TANGO  
TANGO dining chair  
54,5 x 59,5 x 80H

**A-3920/01**  
Silla comedor TANGO  
TANGO dining chair  
54,5 x 59,5 x 80H



**A-3195/02**  
Mesa comedor MYKONOS  
MYKONOS dining table  
240 x 110 x 74H



by **Jacobo Ventura**  
**[Mykonos]**

**A-3195/01**  
Mesa comedor MYKONOS  
MYKONOS dining table  
240 x 110 x 74H



by Jacobo Ventura

## [Mykonos]

A-3197/02  
Mesa comedor MYKONOS  
MYKONOS dining table  
110D x 74H



by Jacobo Ventura

## [Marco]

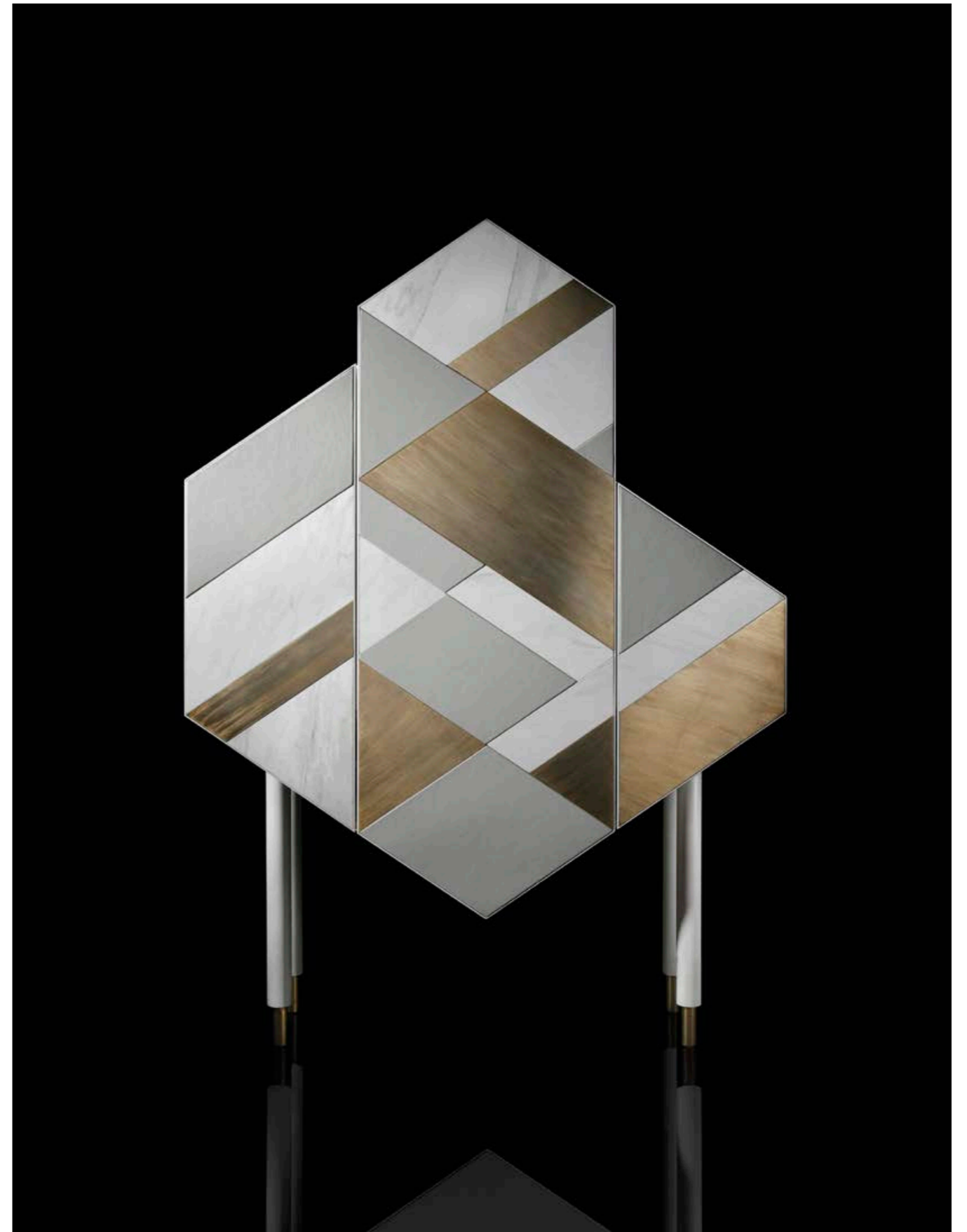


A-3905/01  
Silla comedor MARCO  
MARCO dining chair  
52 x 59 x 84H



by Estudi{H}Ac

# [George]

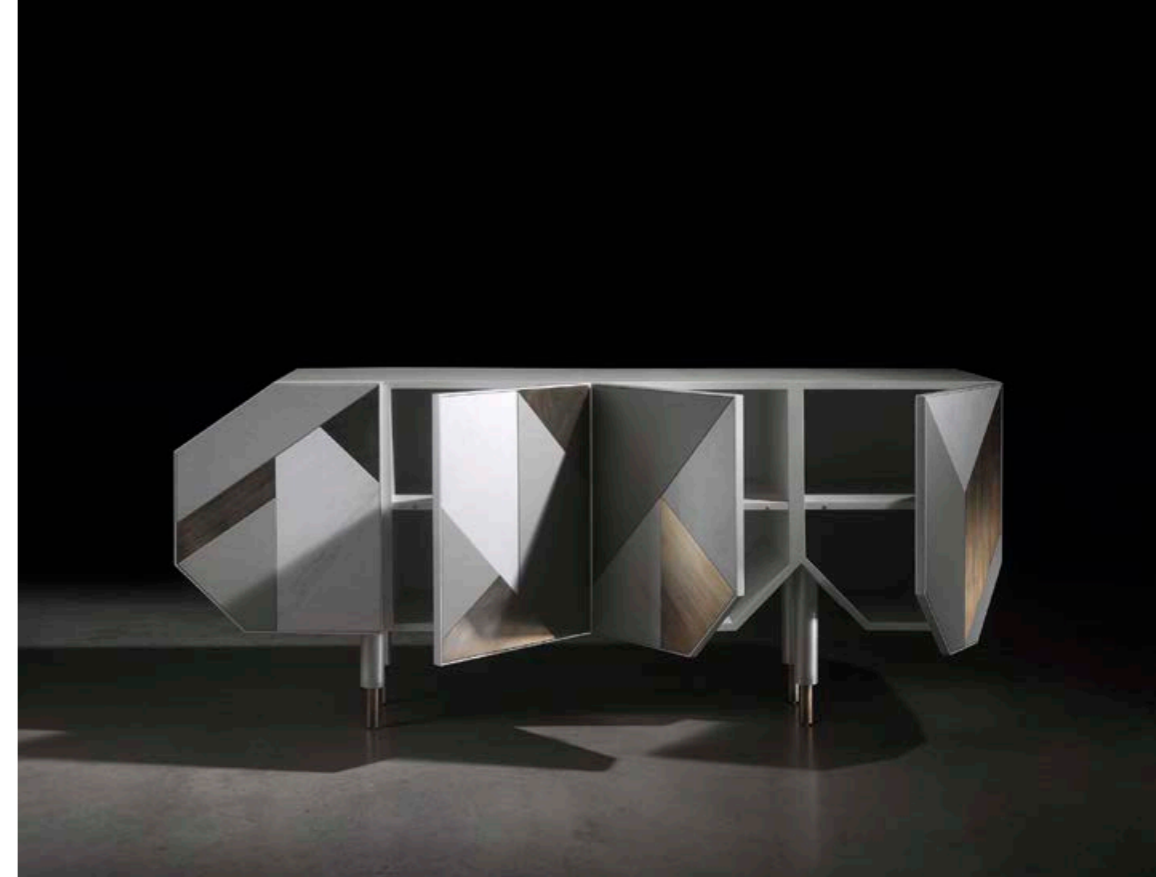


A-4835/01 | Mueble bar GEORGE | GEORGE bar cabinet | 140 x 54 x 200H



by Estudi{H}Ac

# [George]



En este ambiente:

**S-1298/02** Mesa comedor VALENTINA. 220 x 120 x 74H

**A-3917/04** Silla comedor AMIRA. 55 x 59 x 75H

**A-4855/01** Mueble bar LUNA. 97 x 51 x 185H

In this setting:

**S-1298/02** VALENTINA dining table. 220 x 120 x 74H

**A-3917/04** AMIRA dining chair. 55 x 59 x 75H

**A-4855/01** LUNA bar cabinet. 97 x 51 x 185H





by **Jacobo Ventura**



## [Amira]



A-3917/02 | Silla comedor AMIRA | AMIRA dining chair | 55 x 59 x 75H





CONTEMPORARY COLLECTIONS

BED

ROOM



En este ambiente:

**S-4805/04.** Cama REBECCA. 245 x 234 x 134H | **R-0715/L93.** Mesita noche TRAVELER. 65 x 49 x 59H | **S-1475/08.** Banqueta IRIS. 122 x 43 x 42H

In this setting:

**S-4805/04.** REBECCA bed. 245 x 234 x 134H | **R-0715/L93.** TRAVELER night stand. 65 x 49 x 59H | **S-1475/08.** IRIS bench. 122 x 43 x 42H



by Michele Mantovani

## [Rebecca]

**S-4800/04**  
Cama REBECCA  
(colchón 160 cm)  
REBECCA bed  
(160 cm mattress)  
225 x 234 x 134H

**S-4805/04**  
Cama REBECCA  
(colchón 180 cm)  
REBECCA bed  
(180 cm mattress)  
245 x 234 x 134H

**S-4810/04**  
Cama REBECCA  
(colchón 200 cm)  
REBECCA bed  
(200 cm mattress)  
265 x 234 x 134H



by Jacobo Ventura

## [Traveler]



R-0695/N08 | Galán de noche TRAVELER | TRAVELER clothes-rack | 47 x 25 x 113H



by **Jacobo Ventura**

## [Traveler]

**R-0709/D08**  
Escritorio TRAVELER XL  
TRAVELER XL desk  
150 x 60 x 76H

**A-3920/02**  
Silla comedor TANGO  
TANGO dining chair  
54,5 x 59,5 x 80H



by Jacobo Ventura

## [Traveler]



R-0709/L08 | Escritorio TRAVELER XL | TRAVELER XL desk | 150 x 60 x 76H



by Jacobo Ventura

# [Traveler]









by Jacobo Ventura

# [Traveler]

**R-0715/L08**  
Mesita noche TRAVELER  
TRAVELER night stand  
65 x 49 x 59H

**R-1000/L93**  
CÓMODA TRAVELER  
TRAVELER chest of draw.  
120 x 47 x 82H

**R-0715/D93**  
Mesita noche TRAVELER  
TRAVELER night stand  
65 x 49 x 59H

**R-0715/D01**  
Mesita noche TRAVELER  
TRAVELER night stand  
65 x 49 x 59H



**R-1000/L08** | CÓMODA TRAVELER | TRAVELER chest of drawers | 120 x 47 x 82H



# [Traveler]



by Jacobo Ventura



R-0693/D91 | Chifonier TRAVELER | TRAVELER chifonier | 63 x 47 x 123H



by Jacobo Ventura

# [Traveler]



by Jacobo Ventura

# [Traveler]



**R-0692/L84**  
 Mueble accesorios TRAVELER  
 TRAVELER accessories cabinet  
 70 x 54 x 147H

**R-0692/D37**  
 Mueble accesorios TRAVELER  
 TRAVELER accessories cabinet  
 70 x 54 x 147H



by Jacobo Ventura

[Traveler]



En este ambiente:

A-3291/01 Cama COMPASS. 214 x 216 x 100H

R-0877/01 Mesita noche COMPASS. 80 x 50 x 48H

R-0742/01 Aparador COMPASS. 200 x 45 x 75H

R-0692/D93 Mueble accesorios TRAVELER. 70 x 54 x 147H

In this setting:

A-3291/01 COMPASS bed. 214 x 216 x 100H

R-0877/01 COMPASS night stand. 80 x 50 x 48H

R-0742/01 COMPASS sideboard. 200 x 45 x 75H

R-0692/D93 TRAVELER accessories cabinet. 70 x 54 x 147H





Cama COMPASS bed  
**A-3290/01** 194 x 216 x 100H (Colchón/Matr. 160 x200)  
**A-3291/01** 214 x 216 x 100H (Colchón/Matr. 180 x200)  
**A-3292/01** 234 x 216 x 100H (Colchón/Matr. 200 x200)

**R-0877/01**  
 Mesita noche COMPASS  
 COMPASS night stand  
 80 x 50 x 48H



**R-0742/01** | Aparador COMPASS | COMPASS sideboard | 200 x 45 x 75H

by Jacobo Ventura

# [Compass]



CONTEMPORARY BATH COLLECTIONS

# ADRA, LUXURY BATH FURNITURE

Alexandra, en su afán por ofrecer un servicio integral a sus clientes, ha creado la colección ADRA, auténticas piezas de lujo para dar un impulso definitivo al mobiliario de baño. Una amplia gama de producto que nace de la unión de métodos de fabricación artesanal y la tecnología más puntera.

Alexandra, in an effort to fulfil all our clients' needs, presents ADRA, its luxury bathroom furniture collection. A wide range of products created from the fusion between handcrafted manufacturing methods and the latest technology.

B-1405/01 Mueble baño TUBULAR bath cabinet | 190 x 52 x 35H B-1097 Espejo con luz LED · Mirror with LED lighting | 170 x 50H  
B-7520 Lavabo ESLIDA washbasin | 60 X 40 X 11H B-7005/02 Grifo LOUNGE faucet | 23 x 18H

Descubra la colección completa en:  
[www.coleccionalexandra.com](http://www.coleccionalexandra.com)

Explore the entire collection at:  
[www.coleccionalexandra.com](http://www.coleccionalexandra.com)





En este ambiente:

**A-3186/02.** Cama MASTER. 214 x 216 x 100H  
**A-3115/0223.** Mesita de noche MASTER. 60 x 48 x 52H  
**S-1475/10.** Banqueta IRIS. 122 x 43 x 42H  
**S-1060/06.** Sillón CRICKET. 54,5 x 59,5 x 80H

In this setting:

**A-3186/02.** MASTER bed. 214 x 216 x 100H  
**A-3115/0223.** MASTER night stand. 60 x 48 x 52H  
**S-1475/10.** IRIS bench. 122 x 43 x 42H  
**S-1060/06.** CRICKET armchair. 54,5 x 59,5 x 80H



by Jacobo Ventura

[Master]



Cama MASTER bed  
**A-3185/02** 194 x 216 x 100H (Colchón/Matr. 160 x200)  
**A-3186/02** 214 x 216 x 100H (Colchón/Matr. 180 x200)  
**A-3187/02** 234 x 216 x 100H (Colchón/Matr. 200 x200)

**A-3115/0223**  
 Mesita noche MASTER  
 MASTER night stand  
 60 x 48 x 52H

Cama MASTER bed  
**A-3185/01** 194 x 216 x 100H (Colchón/Matr. 160 x200)  
**A-3186/01** 214 x 216 x 100H (Colchón/Matr. 180 x200)  
**A-3187/01** 234 x 216 x 100H (Colchón/Matr. 200 x200)



by Jacobo Ventura

## [Master XL]

Cama MASTER XL bed  
A-3220/01 | 321 x 222 x 100H (Colchón/Matr. 160 x200)  
A-3215/01 | 341 x 222 x 100H (Colchón/Matr. 180 x200)  
A-3225/01 | 361 x 222 x 100H (Colchón/Matr. 200 x200)

A-3115/0728  
Mesita noche MASTER  
MASTER night stand  
60 x 48 x 52H





by **Jacobo Ventura**

**A-3115/0728**  
Mesita noche MASTER  
MASTER night stand  
60 x 48 x 52H



**[Master]**





by Jacobo Ventura

# [Master]



A-3175/0421 | Escritorio MASTER | MASTER desk | 140 x 60 x 75H



by Jacobo Ventura

# [Master]

A-3100/0291 | Cómoda MASTER | MASTER chest of drawers | 118 x 48 x 97H



S-5100/04  
Mesita noche MERCURY  
MERCURY night stand  
61 x 47 x 55H



# [Mercury]

By Jacobo Ventura

## S-5100/02

Mesita noche MERCURY  
MERCURY night stand  
(1 cajón / 1 drawer)  
61 x 47 x 55H

## S-5105/02

Consola MERCURY 130  
MERCURY 130 console  
(2 cajones / 2 drawers)  
130 x 50 x 90H  
(como foto / as picture)

## S-5110/02

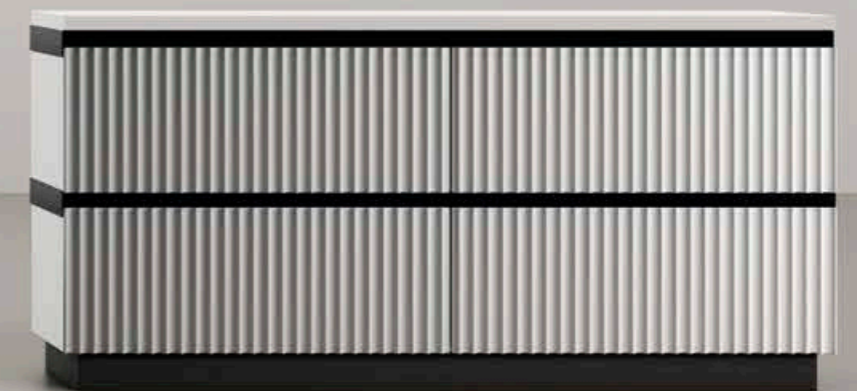
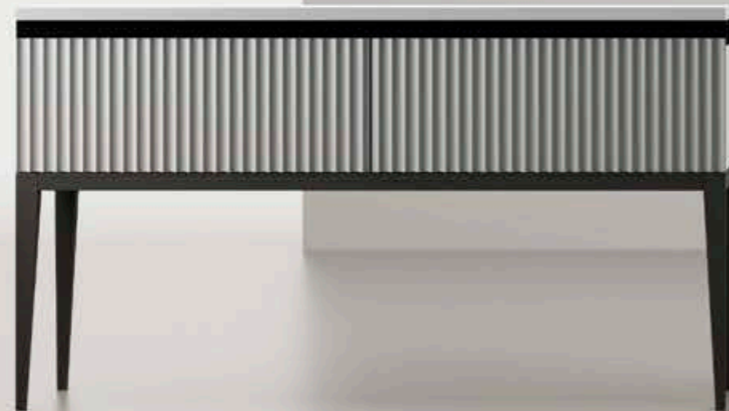
Consola MERCURY 160  
MERCURY 160 console  
(2 cajones / 2 drawers)  
160 x 50 x 90H

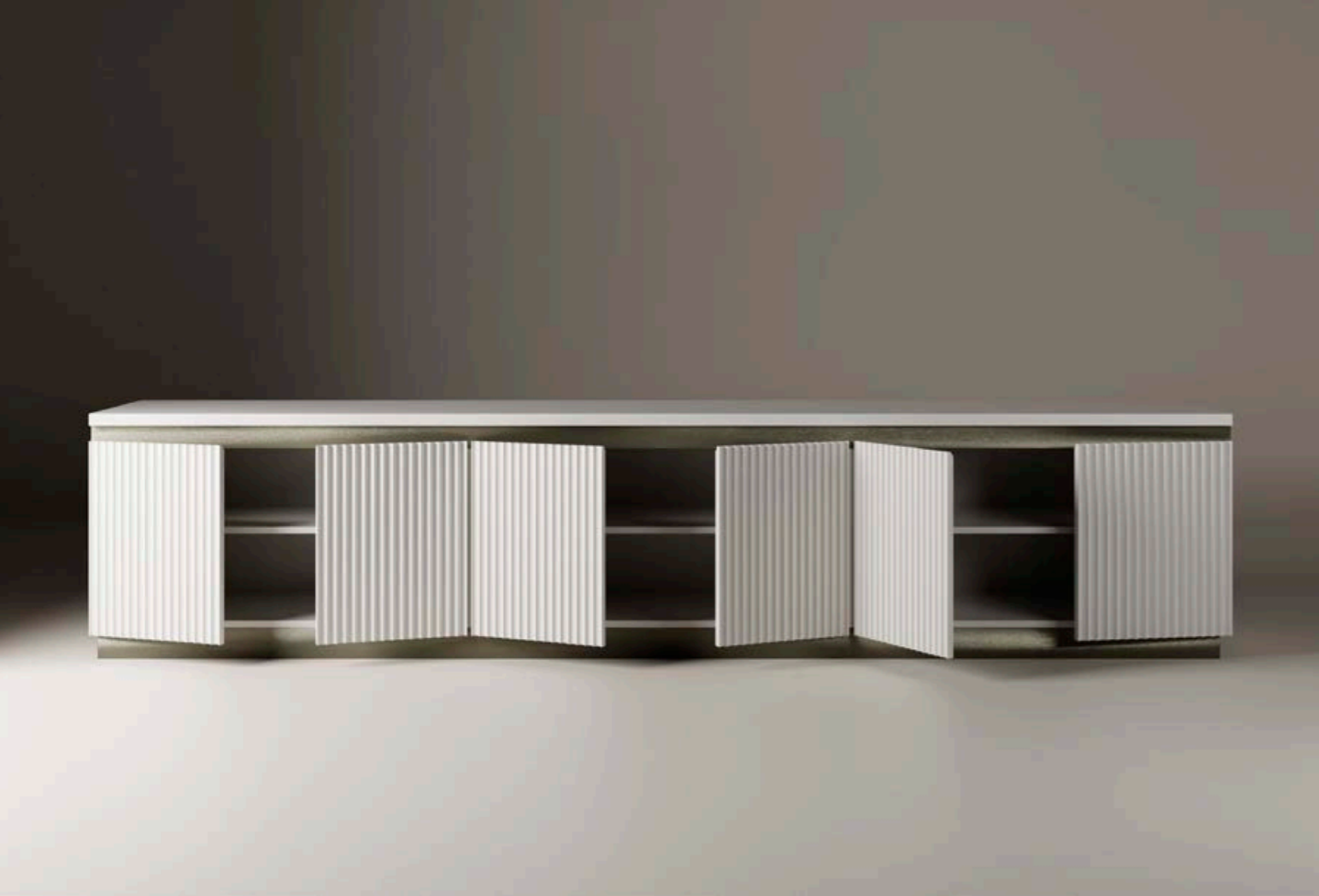
## S-5100/03

Mesita noche MERCURY  
MERCURY night stand  
61 x 47 x 55H

## S-5115/01

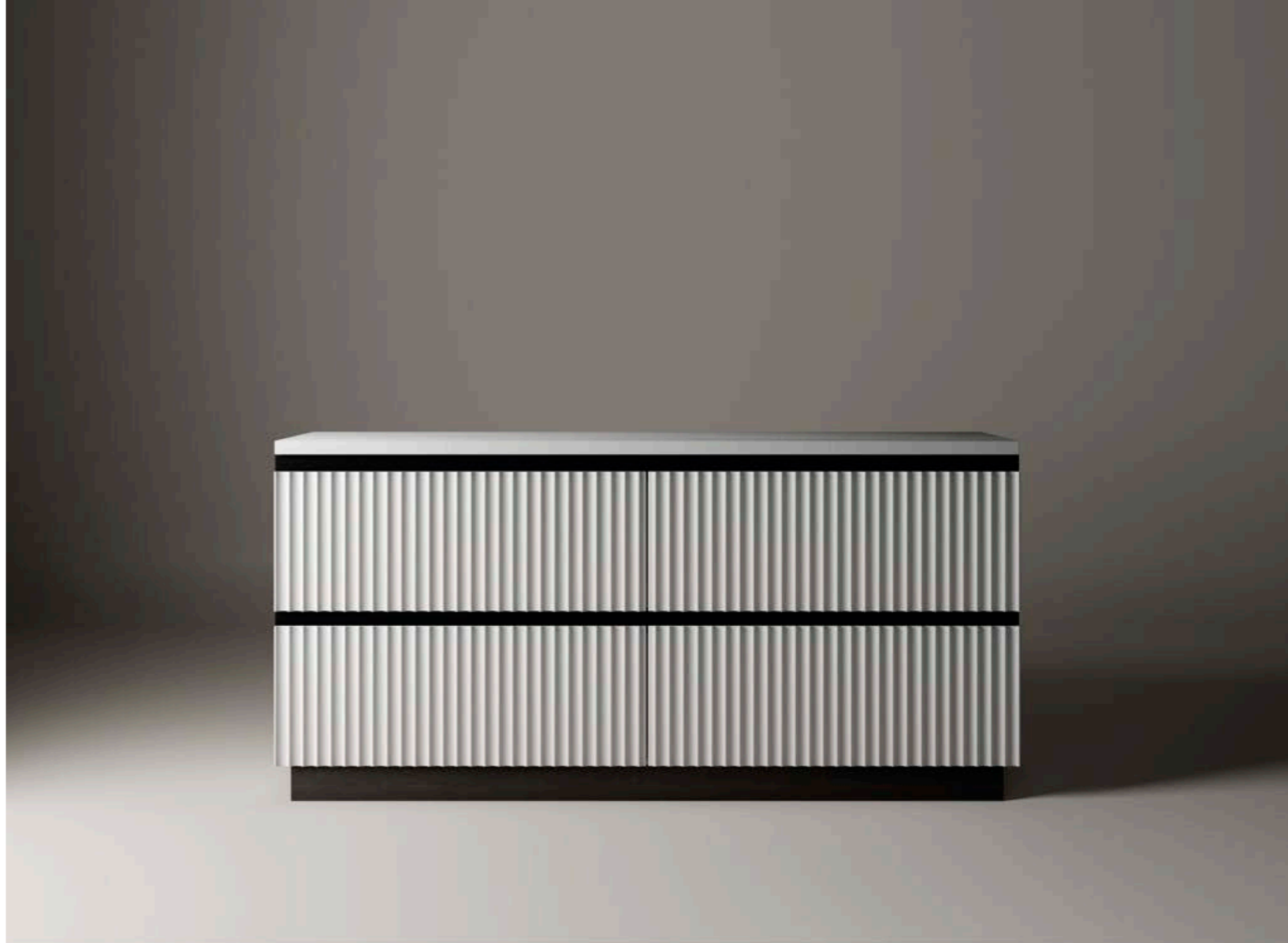
Aparador MERCURY  
MERCURY sideboard  
(4 cajones / 4 drawers)  
160 x 47 x 77H





by Jacobo Ventura

# [Mercury]





by Jacobo Ventura

# [Mercury]



**S-5105/02**  
 Consola MERCURY 130  
 MERCURY 130 console  
 130 x 50 x 90H  
 (2 cajones / 2 drawers)  
 (como foto / as picture)

**S-5110/02**  
 Consola MERCURY 160  
 MERCURY 160 console  
 (2 cajones / 2 drawers)  
 160 x 50 x 90H



Cama ORIENT bed  
**A-3285/01** 228 x 220 x 110H (Colchón/Matrr. 160 x200)  
**A-3286/01** 248 x 220 x 110H (Colchón/Matrr. 180 x200)  
**A-3287/01** 268 x 220 x 110H (Colchón/Matrr. 200 x200)

En este ambiente:  
**A-3286/01** Cama ORIENT. 248 x 220 x 110H  
**S-5100/03** Mesita noche MERCURY. 61 x 47 x 55H  
**S-5115/01** Aparador MERCURY. 160 x 47 x 77H  
**A-4400/02** Chaise longue DUNO. 185 x 83 x 72H  
**S-1070/02** Sillón BLOOMS. 90 x 80 x 72H

In this setting:  
**A-3286/01** ORIENT bed. 248 x 220 x 110H  
**S-5100/03** MERCURY night stand. 61 x 47 x 55H  
**S-5115/01** MERCURY sideboard. 160 x 47 x 77H  
**A-4400/02** DUNO chaise longue. 185 x 83 x 72H  
**S-1070/02** BLOOMS armchair. 90 x 80 x 72H



by **Jacobo Ventura**

**[Orient]**

Cama ORIENT bed

**A-3285/01** 228 x 220 x 110H (Colchón/Matrr. 160 x200)

**A-3286/01** 248 x 220 x 110H (Colchón/Matrr. 180 x200)

**A-3287/01** 268 x 220 x 110H (Colchón/Matrr. 200 x200)



by Jacobo Ventura

## [Grace]



A-3575/01 | Banqueta GRACE | GRACE bench | 190 x 65 x 56H



by María J. Guinot

## [Caronte]



S-1055/01 | Sillón CARONTE | CARONTE armchair | 105 x 118 x 77H



## MAPA DE PRODUCTO / PRODUCT MAP

INFORMACIÓN TÉCNICA /  
TECHNICAL INFORMATION

Los acabados ofrecidos para cada colección en este anexo técnico son una selección que Alexandra recomienda a sus clientes. Contacte con su asesor comercial para conocer todas las posibilidades de cada colección.

Asimismo, Alexandra está perfectamente capacitada para fabricar productos a medida diseñados por sus clientes, contando con un departamento técnico que le ofrece una estrecha colaboración para conseguir los mejores resultados bajo los más altos estándares de calidad y adaptándose al presupuesto establecido.

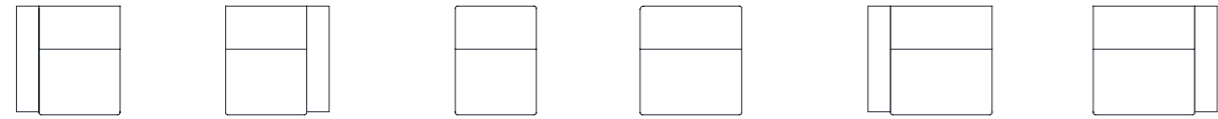
Los acabados mostrados en estas fotografías son orientativos, pudiendo sufrir variaciones al ser elaborados artesanalmente o por las alteraciones propias de la madera sobre la que se aplica.

The finishes offered in this technical annex for each collection are a selection that Alexandra recommends to its clients. Contact your commercial advisor to find out all the options for each collection.

Alexandra specializes in manufacturing custom-made products designed by its clients, with the expertise of its technical department offering close collaboration to achieve the very best results with the highest possible quality within the budget.

Being handcrafted products, the finishes in the photos are approximate and may be subject to change due to variations in the wood on which they are applied.

# Atlanta



**E-4117\*** 101 x 106/163 x 75/98H  
C.O.M. 1: 5,5 m. / 1,5 m<sup>2</sup>  
C.O.M. 2: 6 m.  
C.O.M. 3: 12 m<sup>2</sup>

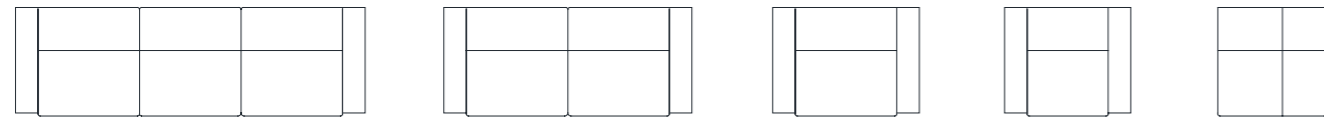
**E-4118\*** 101 x 106/163 x 75/98H  
C.O.M. 1: 5,5 m. / 1,5 m<sup>2</sup>  
C.O.M. 2: 6 m.  
C.O.M. 3: 12 m<sup>2</sup>

**E-4119\*** 79 x 106/163 x 75/98H  
C.O.M. 2: 5 m.  
C.O.M. 3: 10 m<sup>2</sup>

**E-4111\*** 99 x 106/163 x 75/98H  
C.O.M. 1: 5,8 m.  
C.O.M. 2: 6 m.  
C.O.M. 3: 11,5 m<sup>2</sup>

**E-4107\*** 121 x 106/163 x 75/98H  
C.O.M. 1: 6,5 m. / 1,5 m<sup>2</sup>  
C.O.M. 2: 7 m.  
C.O.M. 3: 14 m<sup>2</sup>

**E-4108\*** 121 x 106/163 x 75/98H  
C.O.M. 1: 6,5 m. / 1,5 m<sup>2</sup>  
C.O.M. 2: 7 m.  
C.O.M. 3: 14 m<sup>2</sup>



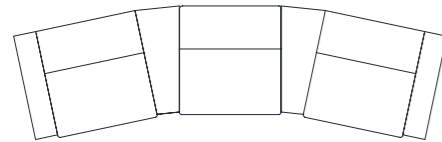
**E-4105\*** 341 x 106/163 x 75/98H  
C.O.M. 1: 18,5 m. / 3 m<sup>2</sup>  
C.O.M. 2: 20 m.  
C.O.M. 3: 39,5 m<sup>2</sup>

**E-4106\*** 242 x 106/163 x 75/98H  
C.O.M. 1: 12,5 m. / 3 m<sup>2</sup>  
C.O.M. 2: 14 m.  
C.O.M. 3: 28 m<sup>2</sup>

**E-4109\*** 143 x 106/163 x 75/98H  
C.O.M. 1: 6,5 m. / 3 m<sup>2</sup>  
C.O.M. 2: 7,5 m.  
C.O.M. 3: 16,5 m<sup>2</sup>

**E-4110\*** 123 x 106/163 x 75/98H  
C.O.M. 1: 6,5 m. / 3 m<sup>2</sup>  
C.O.M. 2: 7,5 m.  
C.O.M. 3: 15 m<sup>2</sup>

**E-4114\*** 107 x 107 x 75/98H  
C.O.M. 2: 7,5 m.  
C.O.M. 3: 15 m<sup>2</sup>



**E-4120\***  
429 x 130/185 x 75/98H  
C.O.M. 1: 20 m. / 8 m<sup>2</sup>  
C.O.M. 2: 23 m.  
C.O.M. 3: 49 m<sup>2</sup>



**A-4115**  
22 x 103 x 61H  
C.O.M. 1: 0,5 m. / 2 m<sup>2</sup>  
C.O.M. 2: 1,5 m.  
C.O.M. 3: 2,5 m<sup>2</sup>



**A-4116**  
44 x 103 x 61H  
C.O.M. 1: 0,5 m. / 2 m<sup>2</sup>  
C.O.M. 2: 2 m.  
C.O.M. 3: 3 m<sup>2</sup>

ACABADO PATAS / LEGS FINISH  
Madera / Wood



Ébano\*\*  
Ebony\*\*

Nogal Deco\*\*  
Deco walnut\*\*

Lacado brillo, satinado o mate / Gloss, satin or matt lacquer



Blanco  
White

Crema  
Cream

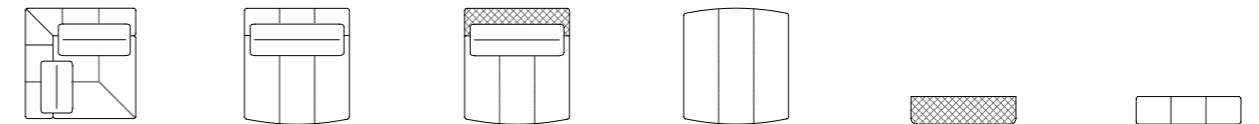
Hielo  
Ice

Negro  
Black

- C.O.M. 1: Tela (m.) / Piel brazo (m<sup>2</sup>) | Fabric (m.) / Leather arm (m<sup>2</sup>)  
- C.O.M. 2: Todo tela (m.) | Just fabric (m.)  
- C.O.M. 3: Todo piel (m<sup>2</sup>) | Just leather (m<sup>2</sup>)

(\*) Con mecanismo eléctrico relax. (\*\*\*) Acabado disponible en versión LUX.  
(\* With recliner motion device. (\*\*\*) Finish available in LUX version.

# Bellagio



**A-4206** 100 x 100 x 90H  
C.O.M. 1: 9,5 m-  
C.O.M. 2: 18,5 m<sup>2</sup>

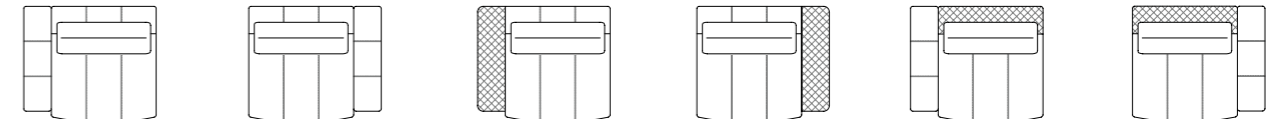
**A-4208** 95 x 105 x 90H  
C.O.M. 1: 7,6 m-  
C.O.M. 2: 15 m<sup>2</sup>

**A-4209\*** 95 x 105 x 90H  
C.O.M. 1: 8,5 m-  
C.O.M. 2: 17 m<sup>2</sup>

**A-4207** 95 x 105 x 45H  
C.O.M. 1: 3,1 m-  
C.O.M. 2: 6 m<sup>2</sup>

**A-4216** 25 x 95 x 75H  
brazo-respaldo /  
Arm-backrest  
C.O.M. 1: 2,5 m-  
C.O.M. 2: 5 m<sup>2</sup>

**A-4217** 25 x 95 x 75H  
brazo-respaldo tapizado /  
upholstered arm-backrest  
C.O.M. 1: 2,5 m-  
C.O.M. 2: 5 m<sup>2</sup>



**A-4200** 120 x 105 x 90H  
C.O.M. 1: 9,6 m-  
C.O.M. 2: 18,5 m<sup>2</sup>

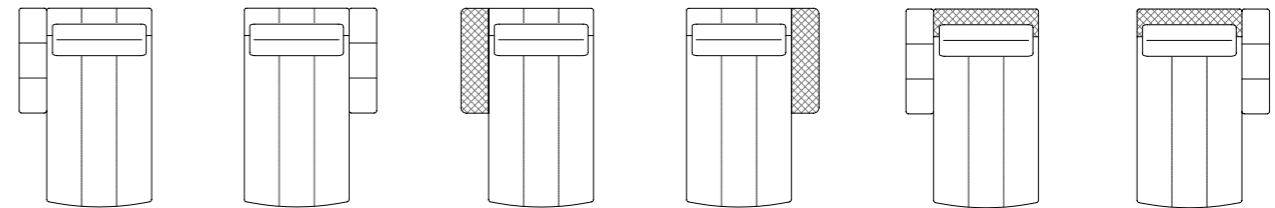
**A-4201** 120 x 105 x 90H  
C.O.M. 1: 9,6 m-  
C.O.M. 2: 18,5 m<sup>2</sup>

**A-4202** 120 x 105 x 90H  
C.O.M. 1: 10,5 m-  
C.O.M. 2: 21 m<sup>2</sup>

**A-4203** 120 x 105 x 90H  
C.O.M. 1: 10,5 m-  
C.O.M. 2: 21 m<sup>2</sup>

**A-4204\*** 120 x 105 x 90H  
C.O.M. 1: 11 m-  
C.O.M. 2: 22 m<sup>2</sup>

**A-4205\*** 120 x 105 x 90H  
C.O.M. 1: 11 m-  
C.O.M. 2: 22 m<sup>2</sup>



**A-4210** 120 x 180 x 90H  
C.O.M. 1: 11,5 m-  
C.O.M. 2: 22 m<sup>2</sup>

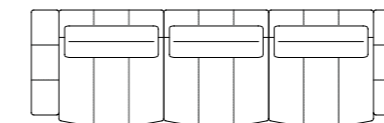
**A-4211** 120 x 180 x 90H  
C.O.M. 1: 11,5 m-  
C.O.M. 2: 22 m<sup>2</sup>

**A-4212** 120 x 180 x 90H  
C.O.M. 1: 11,5 m-  
C.O.M. 2: 22 m<sup>2</sup>

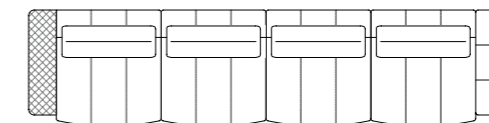
**A-4213** 120 x 180 x 90H  
C.O.M. 1: 11,5 m-  
C.O.M. 2: 22 m<sup>2</sup>

**A-4214\*** 120 x 180 x 90H  
C.O.M. 1: 11,6 m-  
C.O.M. 2: 23 m<sup>2</sup>

**A-4215\*** 120 x 180 x 90H  
C.O.M. 1: 11,6 m-  
C.O.M. 2: 23 m<sup>2</sup>

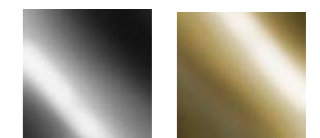


**A-4221**  
335 x 105 x 90H  
C.O.M. 1: 28,1 m-  
C.O.M. 2: 56 m<sup>2</sup>



**A-4220**  
430 x 105 x 90H  
C.O.M. 1: 36,5 m-  
C.O.M. 2: 72 m<sup>2</sup>

ACABADO PATAS / LEGS FINISH  
Hierro / Iron



Níquel negro brillo  
Glossy black nickel

Latón brillo  
Glossy brass

(\*) NOTA:  
Cuando el respaldo es de contrachapado el módulo incluye un rulo de 65 cm y diámetro 10 cm.

(\*) NOTICE:  
When the backrest is made of plywood, the module includes a 65 cm bolster with a diameter of 10 cm

- C.O.M. 1: Todo tela (m.) | Just fabric (m.)  
- C.O.M. 2: Todo piel (m<sup>2</sup>) | Just leather (m<sup>2</sup>)



# Boston Pure



<b>A-4620 / E-4620*</b> 135 x 102 x 78H C.O.M. 8 m. / 8,7 m.	<b>A-4621 / E-4621*</b> 165 x 102 x 78H C.O.M. 9,1 m. / 10 m.	<b>A-4622 / E-4622*</b> 205 x 102 x 78H C.O.M. 10,5 m. / 11 m.	<b>A-4611 / E-4611*</b> 75 x 102 x 78H C.O.M. 4,2 m. / 5 m.	<b>A-4612 / E-4612*</b> 105 x 102 x 78H C.O.M. 4,8 m. / 5,7 m.	<b>A-4613 / E-4613*</b> 145 x 102 x 78H C.O.M. 6 m. / 7 m.	<b>A-4623 / E-4623*</b> 105 x 102 x 78H C.O.M. 6,6 m. / 7,5 m.

<b>A-4624 / E-4624*</b> 135 x 102 x 78H C.O.M. 7,7 m. / 8,7 m.	<b>A-4625 / E-4625*</b> 175 x 102 x 78H C.O.M. 9 m. / 10,5 m.	<b>A-4626 / E-4626*</b> 105 x 102 x 78H C.O.M. 6,6 m. / 7,5 m.	<b>A-4627 / E-4627*</b> 135 x 102 x 78H C.O.M. 7,7 m. / 8,7 m.	<b>A-4628 / E-4628*</b> 175 x 102 x 78H C.O.M. 9 m. / 10,5 m.

<b>A-4629</b> 132 x 102 x 78H C.O.M. 8,3 m.	<b>A-4630</b> 132 x 102 x 78H C.O.M. 8,3 m.	<b>A-4631</b> 135 x 172 x 78H C.O.M. 8,1 m.	<b>A-4632</b> 135 x 172 x 78H C.O.M. 8,1 m.

<b>A-4634</b> 132 x 102 x 64H C.O.M. 7,5 m.	<b>A-4633</b> 132 x 102 x 64H C.O.M. 7,5 m.	<b>A-4614</b> 102 x 102 x 47H C.O.M. 4,3 m.	<b>A-4615</b> 102 x 71 x 47H C.O.M. 2,8 m.	<b>A-4616</b> 60 x 60 x 47H C.O.M. 2 m.

# Cosmopol



<b>A-4513 / E-4513*</b> 80 x 110 x 78H C.O.M. 4,6 m	<b>A-4512 / E-4512*</b> 124 x 110 x 78H C.O.M. 7,2 m	<b>A-4528 / E-4528*</b> 102 x 110 x 78H C.O.M. 6 m	<b>A-4529 / E-4529*</b> 102 x 110 x 78H C.O.M. 6 m	<b>A-4511 / E-4511*</b> 204 x 110 x 78H C.O.M. 11,8 m	<b>A-4510 / E-4510*</b> 284 x 110 x 78H C.O.M. 16,4 m	<b>A-4526 / E-4526*</b> 364 x 110 x 78H C.O.M. 21 m

<b>A-4530</b> 110 x 110 x 78H C.O.M. 7 m	<b>A-4509</b> 80 x 170 x 78H C.O.M. 6,4 m	<b>A-4507</b> 102 x 170 x 78H C.O.M. 7,5 m	<b>A-4508</b> 102 x 170 x 78H C.O.M. 7,5 m	<b>A-4506</b> 124 x 170 x 78H C.O.M. 9 m	<b>A-4505</b> 204 x 170 x 78H C.O.M. 15,4 m	<b>A-4518</b> 160 x 110 x 78H C.O.M. 6,1 m	<b>A-4519</b> 160 x 110 x 78H C.O.M. 6,1 m

<b>A-4525</b> 238 x 110 x 78H C.O.M. 11,7 m	<b>A-4524</b> 238 x 110 x 78H C.O.M. 11,7 m	<b>A-4522</b> 318 x 110 x 78H C.O.M. 16,3 m	<b>A-4523</b> 318 x 110 x 78H C.O.M. 16,3 m

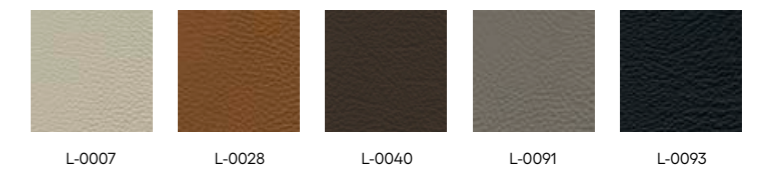
<b>A-4516</b> 284 x 170 x 78H C.O.M. 18,2 m	<b>A-4517</b> 284 x 170 x 78H C.O.M. 18,2 m	<b>A-4521</b> 318 x 170 x 78H C.O.M. 17,6 m	<b>A-4520</b> 318 x 170 x 78H C.O.M. 17,6 m

<b>A-4514</b> 80 x 84 x 42H C.O.M. 2 m	<b>A-4515</b> 136 x 84 x 42H C.O.M. 2,8 m



**A-2440**  
43 x 30H

REVISTERO COSMOPOL / COSMOPOL MAGAZINE BAG  
Piel natural / Natural leather



(\*) Con mecanismo eléctrico relax.  
(\*) With recliner motion device.

(\*) Con mecanismo eléctrico relax.  
(\*) With recliner motion device.

# Falcon



S-1075 | 77 x 92 x 94H  
C.O.M.: 2,5 m.

## Acabados Finishes

### ESTRUCTURA Y PATAS / STRUCTURE AND LEGS Madera de fresno / Ash wood



Hueso Bone Tabaco Tobacco Noche Midnight Latte

### PIEZA TRASERA / BACK Polipiel / Synthetic leather



Q-1029 Q-1013 Q-1005 Q-1017 Q-1002 Q-1018

Consultar toda la colección de polipieles en muestrario "Modena" (pag. 271)  
Check the entire synthetic leather collection in the "Modena" sample book (pag. 271)

# Gio Grace



S-1035 | 71 x 84 x 94H  
C.O.M.: 3 m.



A-3575 | 190 x 65 x 56H  
C.O.M. 4,7 m.

## Acabados Finishes

### ESTRUCTURA Y PATAS / STRUCTURE AND LEGS Madera de fresno / Ash wood



Hueso Bone Tabaco Tobacco Noche Midnight Latte

# Abano Blooms Duno



BLOOMS  
S-1070 | 90 x 80 x 72H  
C.O.M.: 4,5 m.



ABANO  
A-4405 | 290 x 95 x 80H | C.O.M.: 20 m.  
A-4410 | 227 x 95 x 80H | C.O.M.: 18 m.



DUNO  
A-4400 | 185 x 72 x 83H  
C.O.M.: 3,6 m.

# Tupé Spock Eclipse Álvaro



TUPÉ  
S-1032 | 75 x 82 x 79H  
C.O.M.: 3,6 m.



SPOCK  
S-1025 | 83 x 83 x 107H  
C.O.M.: 3,5 m.



ÁLVARO  
A-2451 | 119 x 97 x 108H  
C.O.M.: 8 m.

## Acabados Finishes

### ESTRUCTURA, PATAS Y BASES / STRUCTURE, LEGS AND BASES Madera / Wood



Ébano\* Ebony\* Nogal Deco\* Deco walnut\* Roble centenario Centennial oak Oro envejecido Antique gold Plata envejecida Antique silver Century

### Lacado brillo, satinado o mate / Gloss, satin or matt lacquer



Blanco White Crema Cream Hielo Ice Beige Visón Mink Negro Black

(\*) Acabado disponible en versión LUX.  
(\*) Finish available in LUX version.

# Flute



**A-5020** | 117 x 80 x 86H  
C.O.M. 6 m.

Acabados  
Finishes

PATAS / LEGS  
Hierro / Iron



Platium



Auro envejecido  
Antique auro



Argenta envejecida  
Antique argenta



Blanco texturado  
Textured white

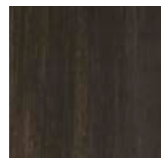
# Tempus



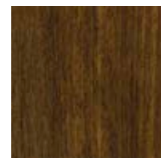
**A-3455**  
135 x 135 x 40H

Acabados  
Finishes

BASE / BASE  
Madera / Wood



Ébano  
Ebony



Nogal Deco  
Deco walnut



Platium



Argenta envejecida  
Antique argenta



Auro envejecido  
Antique auro

TABLERO / TOP

Cristal templado / Tempered glass (10 mm)



Parsol gris  
Grey parsol



Parsol bronze  
Bronze parsol

# Detroit



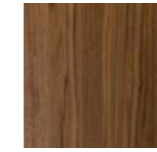
**A-3310**  
120 x 120 x 43H



**A-3311**  
200 x 120 x 43H

Acabados  
Finishes

ESTRUCTURA / STRUCTURE  
Nogal americano / American walnut

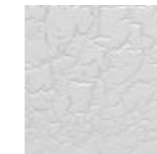


Natural



Ébano  
Ebony

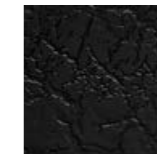
ESTRUCTURA / STRUCTURE  
Lacado craquelado brillo / Shiny cracked lacquer



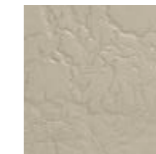
Blanco  
White



Hielo  
Ice



Negro  
Black



Beige



Visón  
Mink

# Eos



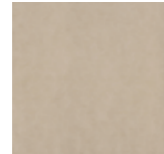
A-2990  
130D x 39H



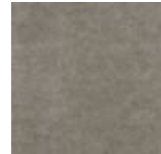
A-2985  
110 x 110 x 39H

## Acabados Finishes

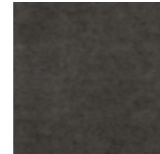
### ESTRUCTURA / STRUCTURE Polipiel / Synthetic leather (ref. CARINA)



F-2880

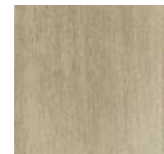


F-2881



F-2882

### ZÓCALO / PLINTH

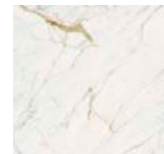


Century



Negro satinado  
Satin black

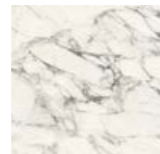
### TABLERO / TOP Porcelánico pulido / Polished porcelain tile



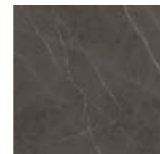
Golden white



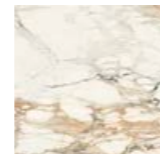
Elegant black



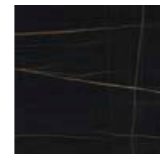
Calacatta



Imperiale



Vena Vecchia



Sahara Noir

# Seven



A-2855  
110D x 30H



A-2850  
130 x 80 x 30H



A-2860  
45D x 50H



A-2865  
60D x 57H



A-2870  
55D x 59H

## Acabados Finishes

### BASE-ESTRUCTURA / BASE-STRUCTURE Hierro / Iron



Niquel viejo  
Antique nickel



Cuero viejo  
Antique brass

### TABLERO / TOP Espejo / Mirror

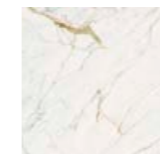


Cromado  
Chrome



Dorado  
Golden

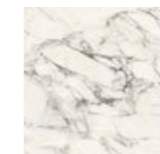
### Porcelánico pulido / Polished porcelain tile (Excepto Ref. A-2870 / Except Ref. A-2870)



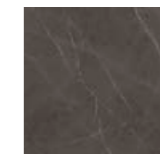
Golden white



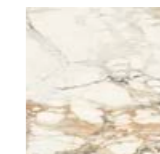
Elegant black



Calacatta



Imperiale

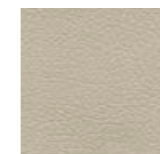


Vena Vecchia

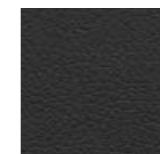


Sahara Noir

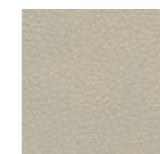
### Polipiel / Synthetic leather (Ref. A-2870)



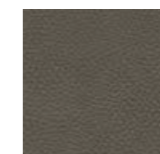
Q-1000



Q-1005



Q-1029



Q-1017

Consultar toda la colección de polipieles en muestrario "Modena" (pag. 271)  
Check the entire synthetic leather collection in the "Modena" sample book (pag. 271)

# Annette



**A-3400**  
120D x 40H



**A-3410**  
50D x 60H



**A-3405**  
80D x 45H

Acabados  
Finishes

PATAS / LEGS  
Hierro / Iron



Niquel viejo  
Antique nickel



Cuero viejo  
Antique brass



Blanco texturado  
Textured white



Gris texturado  
Textured grey



Bronce texturado  
Textured bronze

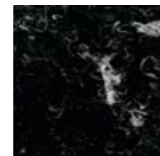
TABLERO / TOP  
Mármol / Marble



Blanco Siberia  
Siberian white



Gris  
Amsterdam  
Amsterdam grey



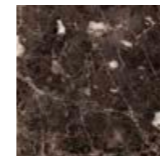
Negro  
Marquina  
Marquina black



Beige  
Hermitage  
Hermitage beige



Blanco  
arabescato  
Arabescato white



Marrón imperial  
Imperial brown

Cristal templado / Tempered glass (10 mm)



Parsol gris  
Grey parsol



Parsol bronce  
Bronze parsol

# Denver



**A-2810**  
110D x 37H



**A-2815** | 120 x 120 x 37H  
**A-2820** | 140 x 70 x 37H



**A-2830** | 55D x 45H  
**A-2940** | 55D x 57H



**A-2825**  
50 x 50 x 45H



**A-2930**  
40 x 20 x 56H



**A-2920**  
140 x 40 x 87H

Acabados  
Finishes

PATAS / LEGS  
Hierro / Iron



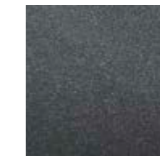
Niquel viejo  
Antique nickel



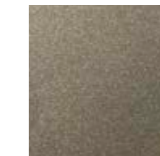
Cuero viejo  
Antique brass



Blanco texturado  
Textured white



Gris texturado  
Textured grey

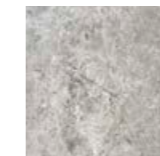


Bronce texturado  
Textured bronze

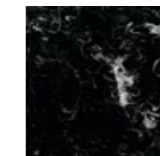
TABLERO / TOP  
Mármol / Marble



Blanco Siberia  
Siberian white



Gris  
Amsterdam  
Amsterdam grey



Negro  
Marquina  
Marquina black



Beige  
Hermitage  
Hermitage beige

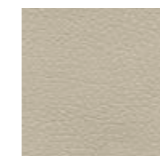


Blanco  
arabescato  
Arabescato white

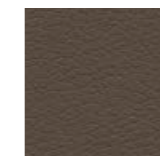


Marrón imperial  
Imperial brown

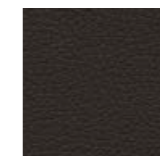
Polipiel / Synthetic leather



Q-1000



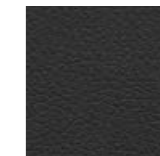
Q-1001



Q-1002



Q-1004



Q-1005

Consultar toda la colección de polipieles en muestrario "Modena" (pag. 271)  
Check the entire synthetic leather collection in the "Modena" sample book (pag. 271)

# Tubular



**A-2635**  
121 x 101 x 43H



**B-1400\***  
100 x 52 x 35H  
MUEBLE BAÑO / BATH CABINET  
(1 cajón / 1 drawer)



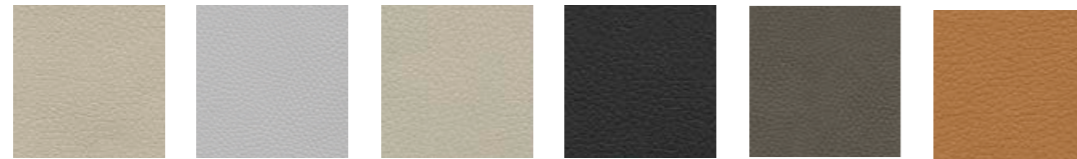
**B-1410\***  
162 x 52 x 35H  
MUEBLE BAÑO / BATH CABINET  
(2 cajones / 2 drawers)



**B-1405\***  
190 x 52 x 35H  
MUEBLE BAÑO / BATH CABINET  
(2 cajones / 2 drawers)

## Acabados Finishes

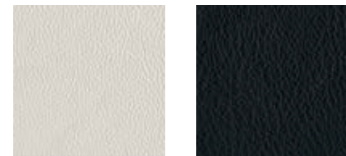
ESTRUCTURA. FRENTE CAJONES (Mobiliario baño) / STRUCTURE. DRAWER FRONTS (Bath cabinets)  
Polipiel / Synthetic leather



Q-1000    Q-1013    Q-1029    Q-1005    Q-1017    Q-1034

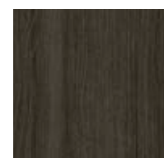
Consultar toda la colección de polipieles en muestrario "Modena" (pag. 271)  
Check the entire synthetic leather collection in the "Modena" sample book (pag. 271)

FRENTE CAJÓN / DRAWER FRONT (Ref. A-2635)  
Piel natural / Natural leather



L-0001    L-0093

INTERIORES / INTERIOR SIDES  
Madera estratificada / Laminated wood



Dark oak

(\*) Encimera: Solid Surface  
(\*) Worktop: Solid Surface

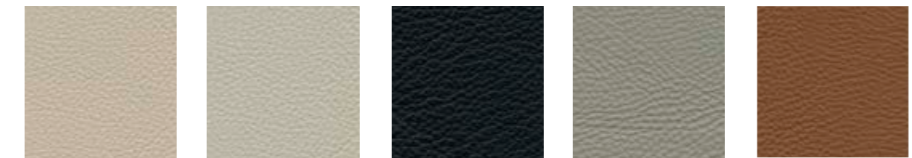
# Axel



**R-1015**  
73 x 67 x 148H  
COFFEE STATION

## Acabados Finishes

ESTRUCTURA Y FRENTE CAJONES / STRUCTURE AND DRAWER FRONTS  
Piel natural / Natural leather



Smoke    Chalky    Nero    Acciaio    Fondotinta

INTERIORES / INTERIOR SIDES  
Lacado mate / Matt lacquer



Blanco White    Crema Cream    Hielo Ice    Pizarra Slate    Visón Mink    Negro Black



R-0698 | 101 x 71 x 42H  
R-0706 | 142 x 95 x 42H  
MESA CENTRO / COFFEE TABLE



R-0705  
240 x 47 x 58H  
MUEBLE TV / TV CABINET



R-0975  
240 x 55 x 76H



R-0715  
65 x 49 x 59H



R-0970  
197 x 51 x 76H



R-1000  
120 x 47 x 82H



R-0693  
63 x 47 x 123H



R-0694  
100 x 60 x 76H



R-0709  
150 x 60 x 76H



R-1010\*  
120 x 76 x 80H  
ISLA / CLOSET ISLAND



R-0695  
47 x 25 x 113H  
GALAN NOCHE / CLOTHES RACK



R-0704\*\*  
70 x 54 x 147H  
COCKTAIL BAR / COCKTAIL BAR



R-1025\*\*  
70 x 71 x 147H  
COFFEE STATION



R-0692\*\*  
70 x 54 x 147H  
ACCESORIOS / ACCESSORIES



R-6025\*  
66 x 71 x 111H  
CAJA FUERTE / SAFE



R-0980  
70 x 50 x 155H



R-0985  
115 x 50 x 155H



R-1020\*\*\*  
115 x 50 x 155H  
COCKTAIL BAR / COCKTAIL BAR



R-1005  
96 x 53 x 212H  
ESTANTERÍA BAR / BAR SHELF

## Acabados Finishes

## EMPELETADO / UPHOLSTERY Piel grabada / Engraved leather



L-0001



L-0002



L-0007



L-0008



L-0021



L-0023



L-0028



L-0033



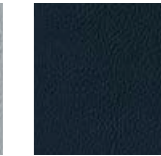
L-0034



L-0040



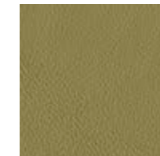
L-0068



L-0071



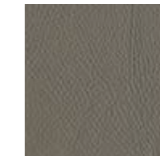
L-0078



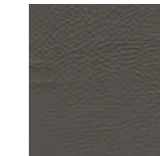
L-0084



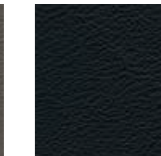
L-0090



L-0091



L-0092



L-0093

Consultar toda la colección de pieles naturales en muestrario "Valencia" (pag. 270)  
Check the entire natural leather collection in the "Valencia" sample book (pag. 270)

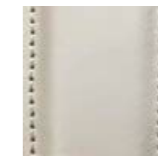
COMPONENTES /  
COMPONENTS  
Piel /  
Leather

PARTE SUPERIOR /  
TOP SURFACE  
Polipiel  
Synthetic leather

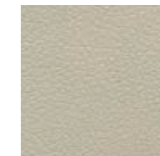
INTERIORES /  
INTERIOR SIDES  
Madera estratificada /  
Laminated wood



Configuración LIGHT  
LIGHT combination



Piedra  
Stone



Q-1000



Light oak



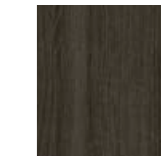
Configuración DARK  
DARK combination



Negro  
Black



Q-1005



Dark oak

Los acabados de las configuraciones LIGHT y DARK no son combinables entre sí  
LIGHT and DARK combinations cannot be combined with each other

(\*) Para tela interior ver muestrario terciopelos colección "Lisboa" / Interior fabric from "Lisboa" velvet collection

(\*\*) Acabado interior disponible en lacado mate o satinado / Interior finish available in matt or satin lacquer

(\*\*\*) Interior puertas tapizado piel natural colección "Valencia" / Upholstered interior doors with "Valencia" natural leather collection

# Compass



R-0745 | 180 x 120 x 40H  
R-0746 | 130 x 90 x 40H  
R-0779 | 90 x 90 x 40H



R-0786  
200 x 45 x 49H



R-0742  
200 x 45 x 75H



R-0775 | 160 x 55 x 55H  
R-0777 | 260 x 55 x 55H



R-0778  
120 x 45 x 49H



R-0725  
53 x 35 x 100H



R-0780  
80 x 40 x 130H



A-3290 | 194 x 216 x 100H (160 cm)  
A-3291 | 214 x 216 x 100H (180 cm)  
A-3292 | 234 x 216 x 100H (200 cm)



R-0877  
80 x 50 x 48H



R-0875 | 232 x 132 x 77H (medidas terreno juego/field measurements: 200 x 100 cm)  
R-0865 | 256 x 144 x 77H (medidas terreno juego/field measurements: 224 x 112 cm)  
R-0870 | 282 x 155 x 77H (medidas terreno juego/field measurements: 254 x 127 cm)

## Acabados Finishes

## EMPELETADO / UPHOLSTERY Polipiel / Synthetic leather



Consultar toda la colección de polipieles en muestrario "Modena" (pag. 271)  
Check the entire synthetic leather collection in the "Modena" sample book (pag. 271)

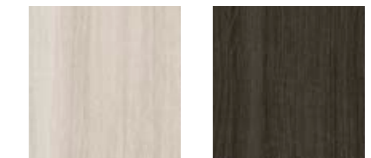
## COMPONENTES / COMPONENTS Piel / Leather



Piedra  
Stone

Negro  
Black

## INTERIORES / INTERIOR SIDES Madera estratificada / Laminated wood



Light oak

Dark oak

## TAPETE MESA BILLAR / POOL TABLE SURFACE CLOTH Tela (71% lana 29% nylon) / fabric (71% wool 29% nylon)



Grey

Camel

Yellow green

Dark green

Petroleum blue



# Mykonos



**A-3195**  
240 x 110 x 74H



**A-3197** | 110D x 74H  
**A-3198** | 160D x 74H

## Acabados Finishes

### BASE / BASE Hierro / Iron



**Niquel viejo**  
Antique nickel



**Cuero viejo**  
Antique brass



**Blanco texturado**  
Textured white

### TABLERO / TOP

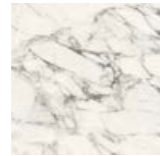
Porcelánico pulido / Polished porcelain tile



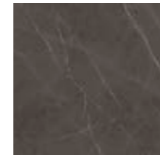
**Golden white**



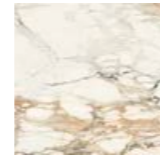
**Elegant black**



**Calacatta**



**Imperiale**



**Calacatta  
Vena Vecchia**



**Sahara Noir**

# Iris



**A-4735**  
193 x 49 x 90H



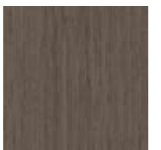
**S-1520**  
128 x 51 x 171H

## Acabados Finishes

### ESTRUCTURA Y CAJONES-PUERTAS / STRUCTURE AND DRAWERS-DOORS Chapado liso / Smooth veneer



**Hueso**  
Bone



**Ash grey**



**Sand**



**Tobacco**

# George



**A-4830**  
200 x 50 x 85H



**A-4835**  
140 x 52 x 200H

## Acabados Finishes

### ESTRUCTURA / STRUCTURE Lacado brillo / Gloss lacquer



**Blanco perlado**  
Pearl white



**Gris perlado**  
Pearl grey

### PUERTAS / DOORS



**L-0010**  
(Piel / Leather)



**White**  
(Porcelánico / Porcelain tile)



**Century**



**L-0101**  
(Piel / Leather)



**Ash grey**



**Century**

(Chapa madera / veneer)

### Configuración BLANCO WHITE combination

### Configuración GRIS GREY combination

Los acabados de las configuraciones BLANCO y GRIS no son combinables entre sí  
WHITE and GREY combinations cannot be combined with each other

# Tango



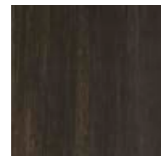
**TANGO**  
A-3915 | 54,5 x 59,5 x 80H  
C.O.M. 1,5 m.



**TANGO**  
A-3920 | 54,5 x 59,5 x 80H  
C.O.M. 2 m.

## Acabados Finishes

### PATAS / LEGS Madera / Wood



Ébano\*  
Ebony\*



Nogal Deco\*  
Deco walnut\*



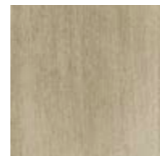
Roble centenario  
Centennial oak



Auro envejecido  
Antique auro

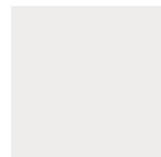


Argenta envejecida  
Antique argenta



Platium

### Lacado brillo, satinado o mate / Gloss, satin or matt lacquer



Blanco  
White



Crema  
Cream



Hielo  
Ice



Beige



Visión  
Mink



Negro  
Black

### DETALLES OPCIONALES / OPTIONAL DETAILS (Refs. A-3915 & A-3920)



Century



Plata  
Silver



Oro  
Gold

(\*) Acabado disponible en versión LUX.

(\*) Finish available in LUX version.

# Carla Amira Marco



**CARLA**  
A-3910 | 56 x 64 x 81H  
C.O.M. 2 m.



**AMIRA**  
A-3917 | 55 x 59 x 75H  
C.O.M. 2 m.



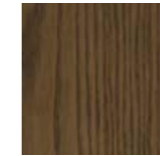
**MARCO**  
A-3905 | 52 x 59 x 84H  
C.O.M. 2 m.

## Acabados Finishes

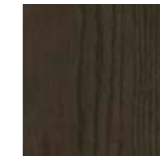
### PATAS / LEGS Madera de fresno / Ash wood



Hueso  
Bone



Tabaco  
Tobacco



Noche  
Midnight



Latte

# Master



**A-3250** | 280 x 109 x 86H (M) | C.O.M. 20 m.  
**A-3255** | 390 x 109 x 86H (L) | C.O.M. 28,5 m.



**A-3100**  
118 x 48 x 97H



**A-3175**  
140 x 60 x 75H



**A-3191** | 240 x 120 x 74H  
**A-3155** | 160 x 160 x 74H



**A-3190**  
180 x 48,5 x 74H



**A-3170**  
259 x 100 x 76H



**A-3115**  
60 x 48 x 52H



**A-3185** | 194 x 216 x 100H (160 cm)  
**A-3186** | 214 x 216 x 100H (180 cm)  
**A-3187** | 234 x 216 x 100H (200 cm)



**A-3220** | 321 x 222 x 100H (160 cm)  
**A-3215** | 341 x 222 x 100H (180 cm)  
**A-3225** | 361 x 222 x 100H (200 cm)

## Acabados Finishes

### ESTRUCTURA Y FRENTE CAJONES-PUERTAS / STRUCTURE AND DRAWER FRONTS-DOORS Lacado brillo / Gloss lacquer



Blanco White    Crema Cream    Hielo Ice    Beige    Visión Mink    Negro Black

### DETALLES / DETAILS Piel bordada / Embroidered leather



L-0007    L-0091    L-0093    L-0021    L-0023    L-0028

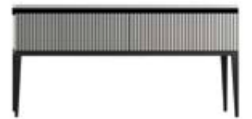
# Mercury



**S-5100**  
60 x 47 x 55H  
(1 cajón / 1 drawer)



**S-5105**  
130 x 50 x 90H  
(2 cajones / 2 drawers)



**S-5110**  
160 x 50 x 90H  
(2 cajones / 2 drawers)



**S-5120**  
160 x 47 x 77H  
(6 puertas / 6 doors)



**S-5115**  
160 x 47 x 77H  
(4 cajones / 4 drawers)

## Acabados Finishes

### ESTRUCTURA Y FRENTE CAJONES-PUERTAS / STRUCTURE AND DRAWER FRONTS-DOORS Lacado mate o satinado / Matt or satin lacquer



Negro Black    Crema Cream    Hielo Ice

### DETALLES metal + PATAS-BASE madera / Metallic DETAILS + Wooden LEGS-BASEBOARD



Black metal + Ébano\* Ebony    Platium + Century\*    Bronce antiguo Antique bronze    Plata antigua Antique silver

### INTERIOR CAJONES / DRAWER INTERIOR



Ébano  
Ebony

# Valencia

Colección piel natural / Natural leather collection



# Modena

Colección polipiel / Synthetic leather collection



**ALEXANDRA**

C. del Coure, sn  
Parque Empresarial Carabona  
Apartado de Correos 220  
12530 Burriana, Castellón, SPAIN  
Tel. 964 513 451

**Diseño y maquetación:**

Design and page layout:  
Alexandra

**Dirección de arte:**

Art direction:  
Alexandra

**Fotografía:**

Photographs:  
Ángelsegurafoto  
Imago Studio  
Paula Martínez  
Alfonso Calza

**Impreso en España:**

Printed in Spain:  
La imprenta CG

[www.coleccionalexandra.com](http://www.coleccionalexandra.com)