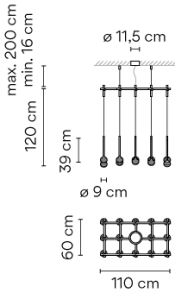
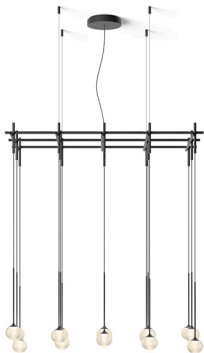


Model Sheet



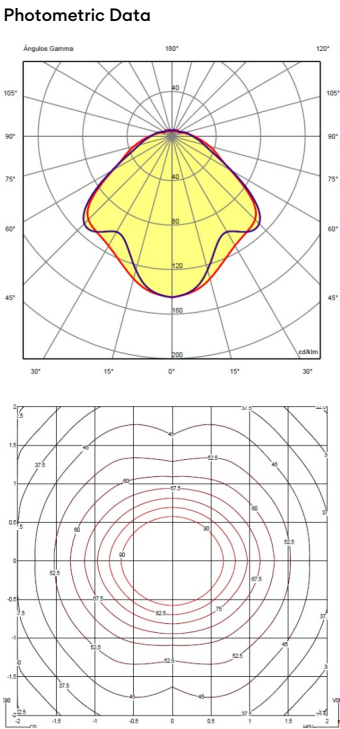
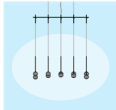
Optional : Extra cable length  
Min. quantity, upcharge and extra lead time  
apply [EN]

Finish	18 Graphite ADAPTA RF 9913 WX 93 White RAL 9016
LED temperature color	2700 K / 3500 K
Dimming	Casambi / Push; 1-10V; DALI-2
Installation type	Built-in

Materials	Sphere: Blown glass Glass fastening: Aluminum Diffuser: PC- Polycarbonate Pendant structure: Steel
Light source	15 x LED 3,15W 1050mA F
LED	CRI>90 4685 lm 99 2700 K / 3500 K
Driver	Constant Current 1050 100~240 V V 50~60 Hz
Remarks	The steel cables that go from the structure to the ceiling are the only ones that allow the height of the lamp to be adjusted. The installation manual describes how to do this and how to cut the cables. Dimmable LED IP20 Bi-volt 50-60Hz

Application	Hanging lamps
Packaging	2 Box 1.177 m x 0.686 m x 0.18 m Gross weighth 18.25 Net weighth 13.75 Vol. 0.2663

Lighting effect  
General lighting  
Lamp for general lighting that equally distributes the light in all directions.



Total Flux 4684 lm

Other Applications

