

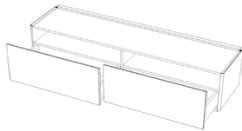
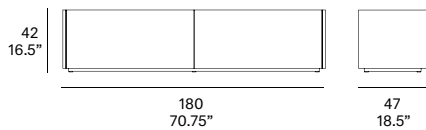
indoor

Team

2-drawer TV module / mueble TV 2 cajones

Mario Ruiz, 2017

T812 C



2-drawer / 2 cajones



solid wood base
base 2 cm / 0.8"



metallic legs
low legs 10 cm / 4"



metallic legs
high legs 20 cm / 8"



STANDARD



SPECIAL

All units are manufactured WITH NO STANDARD CABLE GROMMETS. If needed, please indicate the place and position before placing an order.

Todos los muebles contenedores SE SIRVEN SIN AGUJEROS PASACABLES. Indicar lugar y posición en caso de necesidad.

Furniture system made of solid wood from European oaks. Possibility to customize the top by using different upholstery. There are several options for the legs: solid wood base of 0.8" high and metallic legs of 4" or 8" high. The collection is also available in a lacquered version (MDF).

Sistema de mobiliario fabricado en madera maciza de roble europeo. Posibilidad de personalizar la tapa mediante el empleo de multiples tapizados. Existen varias opciones de patas: base de madera de 2 cm de altura y patas metálicas de 10 ó 20 cm de altura. La colección también está disponible en versión lacada (MDF).

Shipment details

Qty	1 tv module (1 box)
Volume	0,55 m ³ / 19.5 ft ³
Gross weight	70 kg / 154.5 lb
Net weight	63 kg / 139 lb
Item dimensions - with base (width x depth x height)	180 x 47 x 42 cm 70.75" x 18.5" x 16.5"
height with low legs	50 cm / 19.75"
height with high legs	60 cm / 23.5"

expormim

Expormim S.A.
Pol. Ind. Jaime I
46640 Moixent (Valencia) Spain
+34 962 295 144/5
export@expormim.com
www.expormim.com

Expormim USA LLC
(212) 204-8572
usa@expormim.com
www.expormim.com

1/7

indoor

Frame / estructura

solid wood



W01 natural oak



W03 light oak



W02 white stained

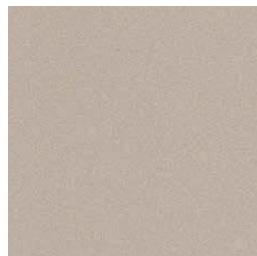


W05 dark stained

textured lacquers



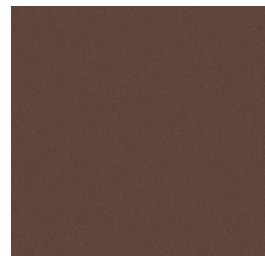
LT24 linen



LT09 champagne



LT10 bronze

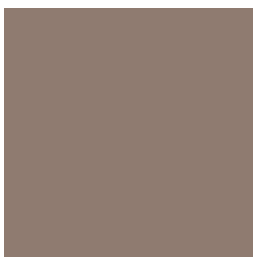


LT26 sable brown



LT11 graphite

lacquers



L5 taupe

expormim

Expormim S.A.
Pol. Ind. Jaime I
46640 Moixent (Valencia) Spain
+34 962 295 144/5
export@expormim.com
www.expormim.com

Expormim USA LLC
(212) 204-8572
usa@expormim.com
www.expormim.com

2/7

indoor

Legs / patas

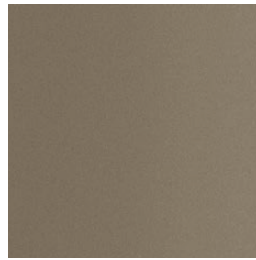
metallic finishes- fine textured



124 FT linen



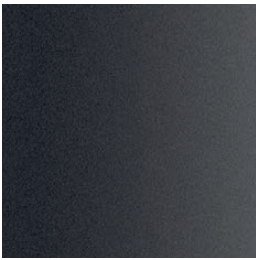
102 FT light grey



110 FT bronze



108 FT oxide

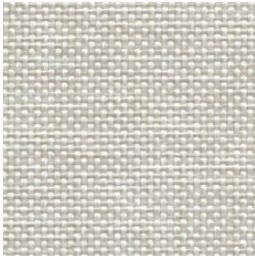


111 FT graphite

indoor

upholstered top / tapa tapizada

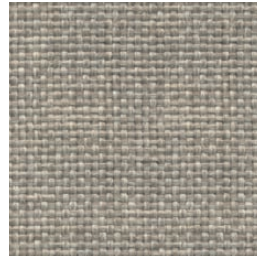
group 31 - dolce Crevin®



dolce 07



dolce 04



dolce 11



dolce 12



dolce 53



dolce 30

group 31 - ito Crevin®



ito 05



ito 18



ito 12



ito 21



ito 20



ito 38



ito 45

expormim

Expormim S.A.
Pol. Ind. Jaime I
46640 Moixent (Valencia) Spain
+34 962 295 144/5
export@expormim.com
www.expormim.com

Expormim USA LLC
(212) 204-8572
usa@expormim.com
www.expormim.com

4/7

indoor

upholstered top / tapa tapizada

group 31 - salvia Crevin®



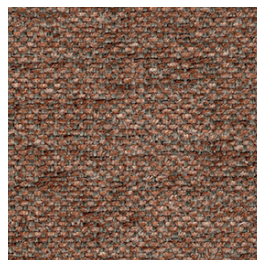
salvia 02



salvia 20



salvia 29



salvia 21



salvia 38

group 31 - sacco Crevin®



sacco 02



sacco 05



sacco 11

group 31 - valencia™ C5 heritage faux leather



valencia heritage 9050



valencia heritage 9051



valencia heritage 9052



valencia heritage 9055

indoor

upholstered top / tapa tapizada

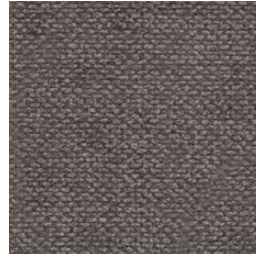
group 32 - velvety Crevin®



velvety 10



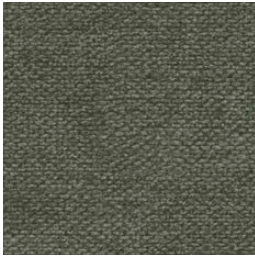
velvety 17



velvety 12



velvety 26



velvety 32

group 32 - indianskop Limonta



indianskop 15



indianskop 02



indianskop 04



indianskop 31



indianskop 46

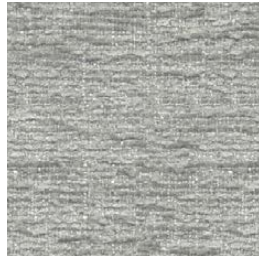
indoor

upholstered top / tapa tapizada

group 32 - clusone Limonta



clusone 04



clusone 06



clusone 05

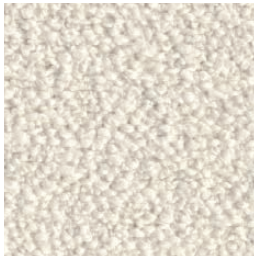


clusone 10



clusone 16

group 32 - ascendent reloaded Carlucci®



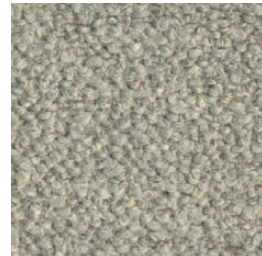
ascendent reloaded 094



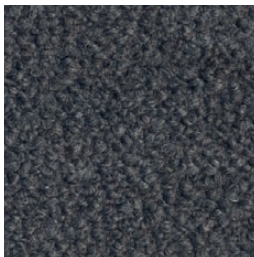
ascendent reloaded 070



ascendent reloaded 071



ascendent reloaded 030



ascendent reloaded 093



ascendent reloaded 022



ascendent reloaded 040

expormim

Expormim S.A.
Pol. Ind. Jaime I
46640 Moixent (Valencia) Spain
+34 962 295 144/5
export@expormim.com
www.expormim.com

Expormim USA LLC
(212) 204-8572
usa@expormim.com
www.expormim.com

7/7