

Net
Dining table
by Kettal Studio

kettal

Dining table

Designer
Kettal Studio

Collection
Net

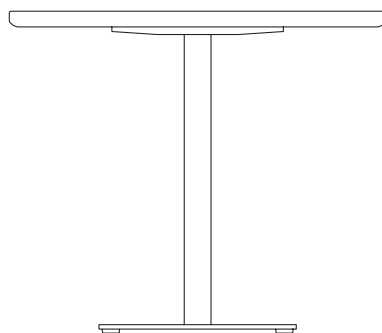
Reference
KS6800500

1/3

The Kettal Net collection conserves a classic structure, elegant and with a smooth, line that gives a calming and attractive appearance. Woven cords and aluminium, tubing come together to provide a light, handcrafted look.

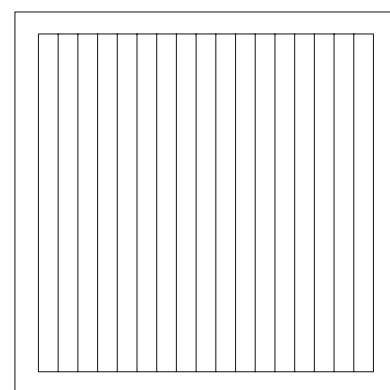
cm/inch

74/29,1



cm/inch

46,4/18,2



90/35,4

* Table top available in different sizes



kettal

Dining table

Designer
Kettal Studio

Collection
Net

Reference
KS6800500

2/3

Materials

Teak
Teak A-Grade, Eco Friendly
Oeko-Tek

Aluminium
Antioxy, Heavy Load, Resistant
En-1421, Kettalize-It, Anti-
Scratch, Easy Clean, Flame
Retardant M1, Eco Friendly
Ecoembes Recycling Process

Marble
Antioxy, Mold resistant, Easy
Clean, Restist U.V., X-Temperature

Maintenance

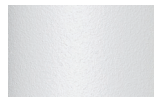
Clean with mild soap using
sponge or cloth. Be gentle
while cleaning, do not scrub
aggressively the fabric. Once
cleaned please make sure you
remove soap excess.

In case of aggressive stains
clean with diluted household
bleach.

Clean stains promptly. The
longer it remains, more difficult
will be to remove.

Once cleaned the fabric steam
iron the fabric. Just use steam,
be carefull NOT placing the
iron directly in the fabric it will
get damage.

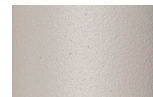
Table Base Colour Options



Chalk
721



Bone
678



Tuff
103



Mist
773



Flint
734



London Clay
729



Mahogany
100



Carbon
737



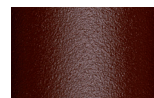
Lilac
104



Feldspar
082



Sepia
088



Terra Rossa
087



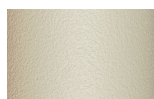
Magma
086



Terracota
085



Sahara
139



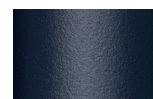
Camomile
106



Aquamarine
107



Cobalt
089



Indigo
094



Jade
091



Onyx
101



Juniper
092



Amazon
102



Bronze
093



Corten
727



Claystone
741



Sand Storm
132



Pumice
131



Galena
105



Manganese
726

Table Top Colour Options



Teak



Marble
079

Other

Dining table

Designer
Kettal Studio

Collection
Net

Reference
KS6800500

3/3

Other Characteristics


 Adjustable Legs

Table Top Size Options

Aluminium 80x80 / 31,5x31,5
90x90 / 25,4x35,4
Ø90 / Ø25,4

Glaze 80x80 / 31,5x31,5
90x90 / 25,4x35,4
Ø90 / Ø25,4

Teak 80x80 / 31,5x31,5
Ø80 / Ø31,5
90x90 / 25,4x35,4
Ø90 / Ø25,4

White Marble 94x94 / 37x37
Ø90 / Ø25,4

Table Top Colour Options



Chalk
721



Bone
678



Tuff
103



Mist
773



Flint
734



London Clay
729



Mahogany
100



Carbon
737



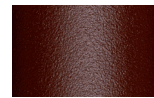
Lilac
104



Feldspar
082



Sepia
088



Terra Rossa
087



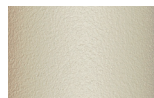
Magma
086



Terracota
085



Sahara
139



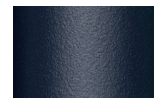
Camomile
106



Aquamarine
107



Cobalt
089



Indigo
094



Jade
091



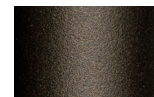
Onyx
101



Juniper
092



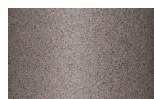
Amazon
102



Bronze
093



Corten
727



Claystone
741



Sand Storm
132



Pumice
131

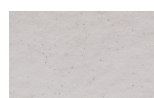


Galena
105

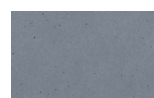


Manganese
726

Table Top Colour Options



Dolomite
373



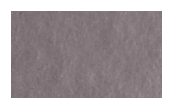
Indian Sapphire
371



Montana
377



Erinite
376



Black Diamond
374



Smoky Quartz
370



Jasper
375



Obsidian
372

Glaze Paints