

WEAVE

ROUND COFFEE TABLE
REF.: 78153



Materials

Powder coated aluminium structure. Rope. Compact.

Dimensions

Length x width x height: 69 x 69 x 39,5 cm/
27,17 x 27,17 x 15,55 in

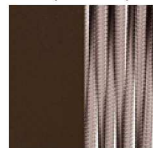
Weight: 16 kg / 35,2 lb

Volume: 0,25 m³

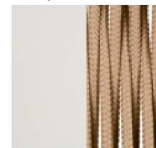
Finish

Weavings: Rope 8 mm Ø.

Taupe Grey
60 with
Taupe Rope



Cream 61
with Nougat
Rope



Taupe Grey 63
with Nougat
Rope

