

WEAVE

RECLINING ARMCHAIR

REF.: 77198



Materials

Epoxi lacquered aluminum structure. Rope. Swing and wheels.

Dimensions

Length x width x height:

85 x 120 x 85 cm. / 33.5 x 47.2 x 33.5 in.

Seating height: 33 cm. / 13.1 in.

Armrests height: 52 cm. / 20.5 in.

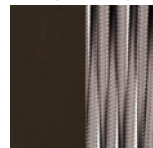
Weight: 30,5 Kg. / 67 lb.

Volume: 0.65 m³.

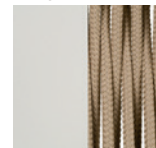
Finish

Weavings: Rope 8 mm ϕ .

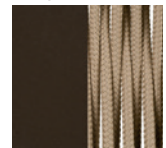
Taupe Grey
60 with
Taupe Rope



Cream 61
with Nougat
Rope



Taupe Grey 63
with Nougat
Rope



Cushion content

Polyurethane Foam 35Kg HR Density.

Fabric

100% Solution Dyed Acrylic with stain and mildew resistant treatment.

Avoid condensation from hot and humidity. Good oil repellency.

Light fastness 7/8. Warranty 5 years.

See available fabrics samples.