

Mesh

Right corner module

“2 Sides connection”

by Patricia Urquiola

**kettal**

# Right corner module “2 Sides connection”

Designer  
Patricia Urquiola

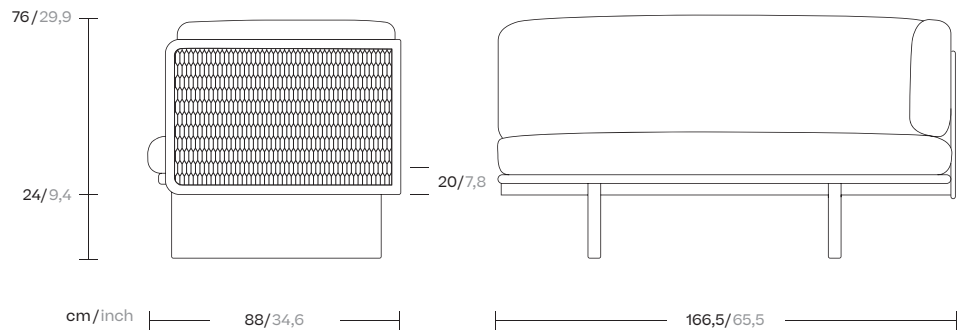
Collection  
Mesh

Reference  
KS1700500

1/3

Kettal Mesh collection recalls architectural facades, which filter the surrounding environment without stopping the light and air flow. Industrial and natural materials, hard and soft surfaces, transparent and solid volumes are putted face to face in order to create this family of outdoor furniture based in contrasts.

cm/inch



kettal

# Right corner module “2 Sides connection”

Designer  
Patricia Urquiola

Collection  
Mesh

Reference  
KS1700500

2/3

## Materials

**Aluminium**  
Antioxy, Heavy Load, Resistant En-1421, Kettalize-It, Anti-Scratch, Easy Clean, Flame Retardant M1, Eco Friendly Ecoembes Recycling Process

**Teak**  
Eco-friendly, A-grade, Heavy Load

**Fabric**  
Heavy Load, 100.000 Cycles, Heavy Load Resistant 1000 Decitex, Kettalize-It, Resist U.V. En-581-4, Easy Clean, Abrasion, Resistance 30.000 Cycles, Quickdry

## Maintenance

Clean with mild soap using sponge or cloth. Be gentle while cleaning, do not scrub aggressively the fabric. Once cleaned please make sure you remove soap excess.

In case of aggressive stains clean with diluted household bleach.

Clean stains promptly. The longer it remains, more difficult will be to remove.

Once cleaned the fabric steam iron the fabric. Just use steam, be carefull NOT placing the iron directly in the fabric it will get damage.

## Frame Colour Options



Chalk  
721



Bone  
678



Tuff  
103



Mist  
773



Flint  
734



London Clay  
729



Mahogany  
100



Carbon  
737



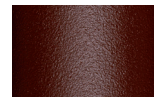
Lilac  
104



Feldspar  
082



Sepia  
088



Terra Rossa  
087



Magma  
086



Terracota  
085



Sahara  
139



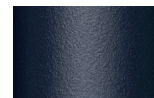
Camomile  
106



Aquamarine  
107



Cobalt  
089



Indigo  
094



Jade  
091



Onyx  
101



Juniper  
092



Amazon  
102



Bronze  
093



Corten  
727



Claystone  
741



Sand Storm  
132



Pumice  
131



Galena  
105



Manganese  
726

## Frame Colour Options



Teak  
904

## Other

# Right corner module “2 Sides connection”

Designer  
Patricia Urquiola

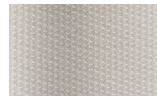
Collection  
Mesh

Reference  
KS1700500

3/3

## Seat/Back/Side Cushion

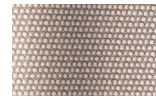
## Terrain Laminate Fabrics



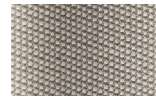
White Cliffs  
290



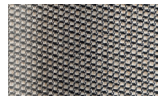
Dry Sand  
285



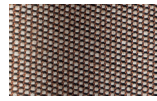
Porous Grey  
291



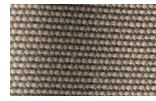
Limestone  
292



Fog  
289



Deer  
286



Wet Sand  
287



Cobblestone  
302



Cyprus Umber  
301



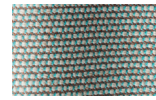
Loam  
297



Charcoal  
293



Arctic  
295



Fjord  
248



Cerulean  
314



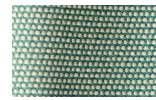
Caribbean  
298



Atlantic  
311



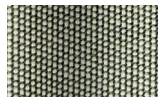
Rainforest  
312



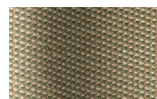
Lagoon  
249



Cedar  
288



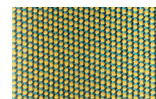
Moss  
296



Olive  
313



Autumn  
315



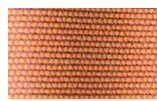
Summer Sky  
317



Golden Sand  
303



Flamma  
304



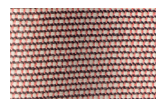
Sunrise  
299



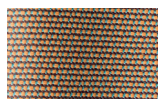
Saffron  
305



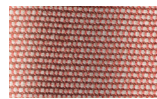
Burnt Sienna  
306



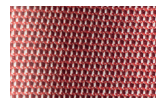
Ash Rose  
294



Cooper  
316



Dusk Pink  
307



Flamingo  
310



Coral  
309



Sandstone  
308