

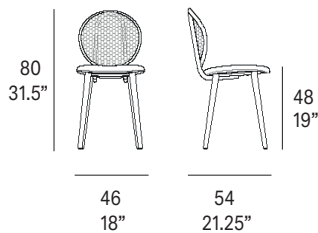
indoor

# Loop

## Dining chair with solid wood legs / silla con patas de madera

Norm Architects, 2023/2024

T001 W



Dining chair with structure made of peeled and tinted natural rattan of 28 mm/1.1" diameter. Legs are made of beech wood or lacquered beech wood option. Backrest manufactured in tinted natural wicker ("octagonal wicker"). Finished with a three step water-based coating (dye, base coat and top coat) highly resistant to solar radiation thanks to UV filters. Upholstered seat. Possibility of customization through a wide variety of high performance technical fabrics. Protective caps.

Silla con estructura en rattan natural pelado y tintado de 28 mm de calibre. Las patas pueden ser de madera de haya o madera de haya lacada. Respaldo fabricado en rejilla natural tintada ("octagonal wicker"). Acabado con recubrimiento en tres fases (tinte, fondo y acabado) con filtros UV que lo hacen altamente resistente a la radiación solar. Los acabados utilizados son en base al agua. Asiento tapizado. Posibilidad de personalización mediante una amplia variedad de tejidos técnicos de altas prestaciones de uso. Tacos protectores.

### Shipment details

Qty	1 chair (1 box)
Volume	0,26 m <sup>3</sup> / 9.18 ft <sup>3</sup>
Gross weight	9,5 kg / 20.9 lb
Net weight (1 chair)	5,5 kg / 12.1 lb
Box dimensions (approx.)	52 x 60 x 85 cm 20.4" x 23.6" x 33.4"
Item dimensions (width x depth x height)	46 x 54 x 80 cm 18" x 21.25" x 31,5"
COM (1, 40 - 1,50 m / 54"-59")	cushion: 0,70 m / 0.76 yd

**Rattan**

**Natural\_matt**



R10 natural

**Tinted\_matt**



R30 oak



R03 noce



R05 grigio



R23 french grey



R06 verde oliva



R08 azzurro



R09 nero

**Tinted\_gloss**



R31 cognac



R32 antique brown



R33 alpine green



indoor

**Legs / patas**

**solid wood / madera**



W01 natural oak



W03 light oak



W02 white stained



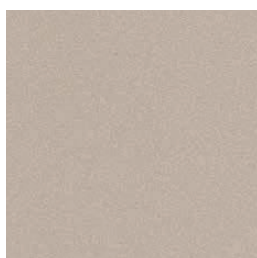
W05 dark stained

**textured lacquers**

lacquered beech wood / madera de haya lacada



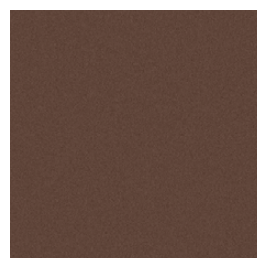
LT24 linen



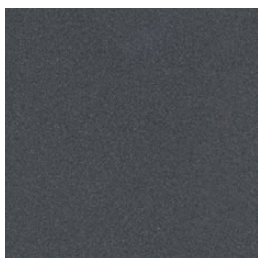
LT09 champagne



LT10 bronze



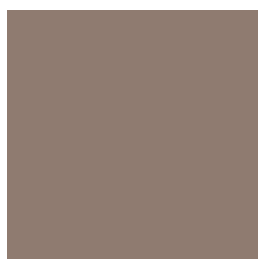
LT26 sable brown



LT11 graphite

**lacquers**

lacquered beech wood / madera de haya lacada

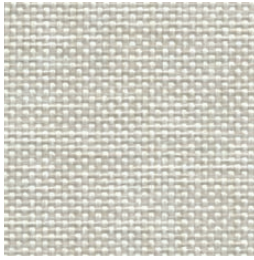


L5 taupe

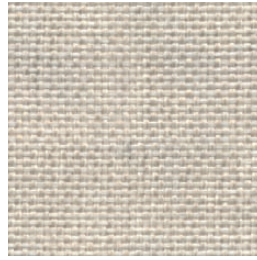
indoor

Cushions / confección

group 31 - dolce Crevin®



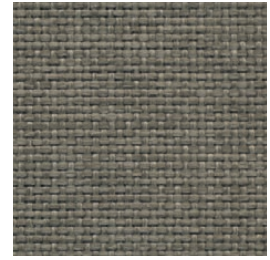
dolce 07



dolce 04



dolce 11



dolce 12



dolce 53



dolce 30

group 31 - ito Crevin®



ito 05



ito 18



ito 12



ito 21



ito 20



ito 38



ito 45



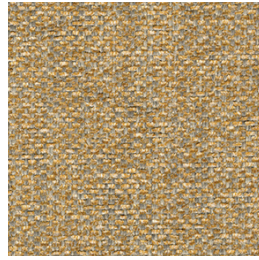
indoor

Cushions / confección

group 31 - salvia Crevin®



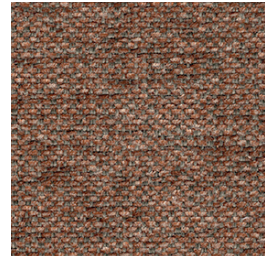
salvia 02



salvia 20



salvia 29



salvia 21



salvia 38

group 31 - sacco Crevin®



sacco 02



sacco 05



sacco 11

group 31 - valencia™ C5 heritage faux leather



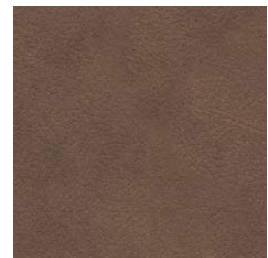
valencia heritage 9050



valencia heritage 9051



valencia heritage 9052



valencia heritage 9055

indoor

Cushions / confección

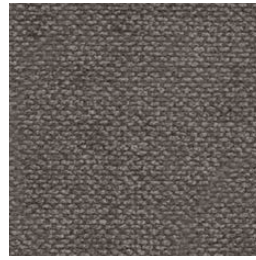
group 32 - velvety Crevin®



velvety 10



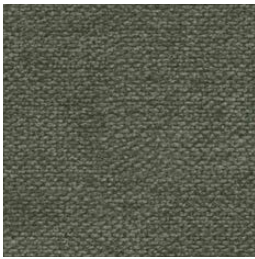
velvety 17



velvety 12



velvety 26



velvety 32

group 32 - indianskop Limonta



indianskop 15



indianskop 02



indianskop 04



indianskop 31



indianskop 46

**expormim**

Expormim S.A.  
Pol. Ind. Jaime I  
46640 Moixent (Valencia) Spain  
+34 962 295 144/5  
export@expormim.com  
www.expormim.com

Expormim USA LLC  
(212) 204-8572  
usa@expormim.com  
www.expormim.com

6/8



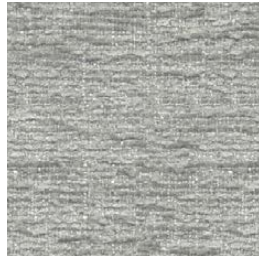
indoor

Cushions / confección

group 32 - clusone Limonta



clusone 04



clusone 06



clusone 05

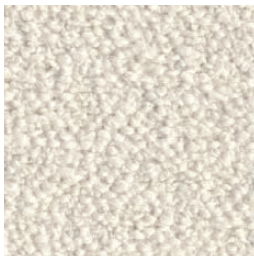


clusone 10



clusone 16

group 32 - ascendent reloaded Carlucci®



ascendent reloaded 094



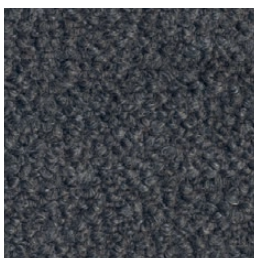
ascendent reloaded 070



ascendent reloaded 071



ascendent reloaded 030



ascendent reloaded 093



ascendent reloaded 022



ascendent reloaded 040

indoor

Cushions / confección

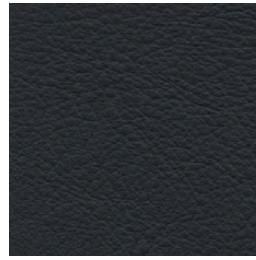
group 33 - elmosoft Elmo® leather



elmosoft 22024



elmosoft 33004



elmosoft 99999