

Products / Dining Tables / Mari-sol 4-legged Double Table Base

Mari-sol 4-legged double table base

by Eugeni Quitllet

Mari-sol Collection, designed by Eugeni Quitllet for Vondom, is composed by a design table that **combines technology in its function with sensuality** in its shape. The answer for adorning terraces around the world.

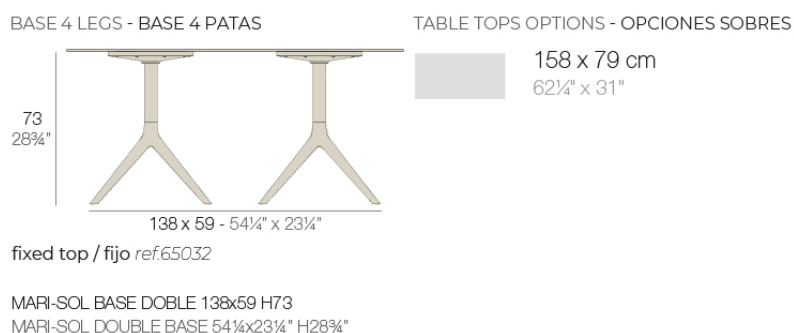


Info

Description

Extruded aluminum tube with cast aluminum base coated with epoxy baked painting. Item suitable for indoor and outdoor use. Table top not included.

Weight: 9.8 Kg



Accessories

- **HPL**

HPL black edge

- **NONAME-66116B**

SOLID CORESolidCore

Finishes

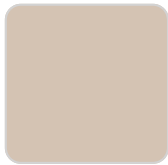
Ref. 66413B

SOLID CORE SolidCore

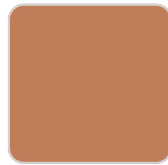
finishes

Fixed

Ref. 65032



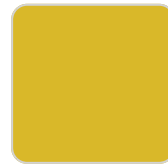
crema



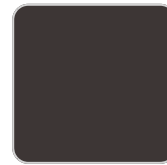
melon



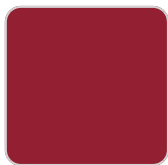
castoro fiber



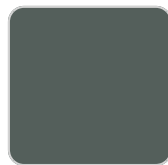
mostaza



bronze



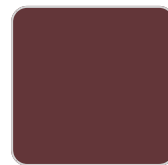
red



modo green



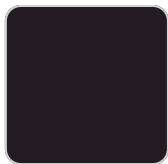
ecru



purjai red



black



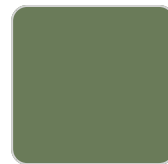
notte blue



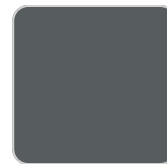
white



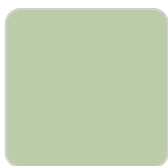
british gray



pickle



traffic gray



almond

Powder coated aluminum base with non collapsable attachment made of polyamide and fiber glass

tabletops

HPL

Ref. 66413

HPL black edge

