

indoor

# Reposo

## Chaise longue / tumbona

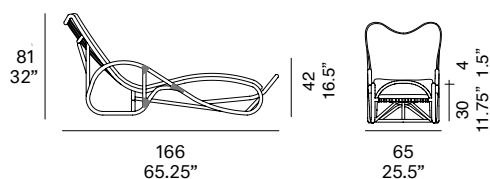
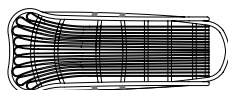
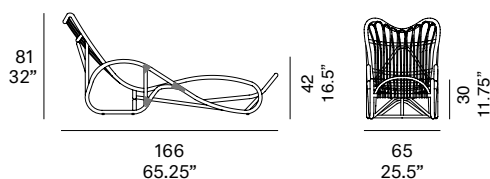
Studio expormim, 2012

T160



Chaise longue with structure made of peeled and tinted natural rattan of 1.26" diameter. Seat and backrest manufactured in peeled and tinted natural rattan of 0.4" diameter. Finished with a three step water-based coating (dye, base coat and top coat) highly resistant to solar radiation thanks to UV filters. Optional cushion. Possibility of customization through a wide variety of high performance technical fabrics. Protective caps.

Tumbona con estructura en rattan natural pelado y tintado de 32 mm de calibre. Asiento y respaldo fabricado en rattan natural pelado y tintado de 10 mm de calibre. Acabado con recubrimiento en tres fases (tinte, fondo y acabado) con filtros UV que lo hacen altamente resistente a la radiación solar. Los acabados utilizados son en base al agua. Cojín de asiento opcional con posibilidad de personalización mediante una amplia variedad de tejidos técnicos de altas prestaciones de uso. Tacos protectores.



### Shipment details

Qty	1 chaise longue (1 box)
Volume	1,02 m <sup>3</sup> / 36 ft <sup>3</sup>
Gross weight	16 kg / 35.3 lb
Net weight	12 kg / 26.5 lb
Item dimensions (width x depth x height)	67 x 74 x 79 cm 26.5" x 29" x 31"
COM	cushion: 2,20 m / 2.4 yd (1, 40 - 1,50 m / 54"-59")

**expormim**

Expormim S.A.  
Pol. Ind. Jaime I  
46640 Moixent (Valencia) Spain  
+34 962 295 144/5  
export@expormim.com  
www.expormim.com

Expormim USA LLC  
(212) 204-8572  
usa@expormim.com  
www.expormim.com

1/5

indoor

**Rattan colored**

**Tinted\_matt**



R30 oak



R03 noce



R05 grigio



R06 verde oliva



R08 azzurro



R09 nero

**Tinted\_gloss**



R31 cognac



R32 antique brown



R33 alpine green

**Lacquered\_matt**



R02 bianco



R22 clay



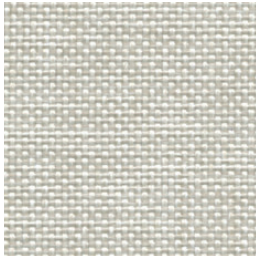
R14 japanese red



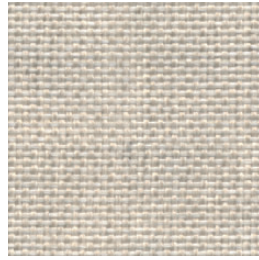
indoor

Cushions / confección

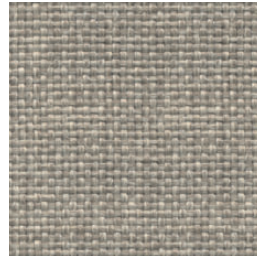
group 31 - dolce Crevin®



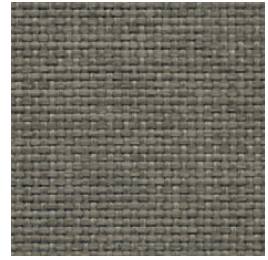
dolce 07



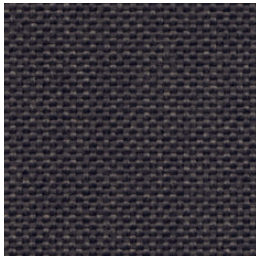
dolce 04



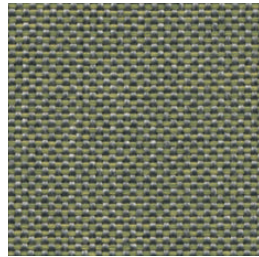
dolce 11



dolce 12



dolce 53

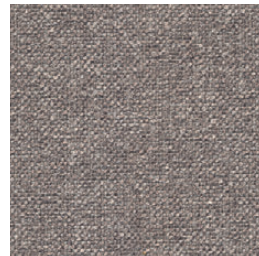


dolce 30

group 31 - ito Crevin®



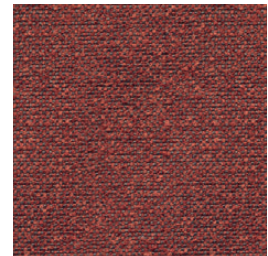
ito 05



ito 18



ito 12



ito 21



ito 20



ito 38



ito 45

indoor

Cushions / confección

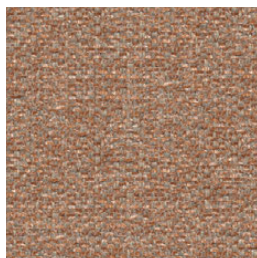
group 31 - salvia Crevin®



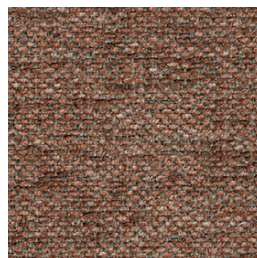
salvia 02



salvia 20



salvia 29



salvia 21



salvia 38

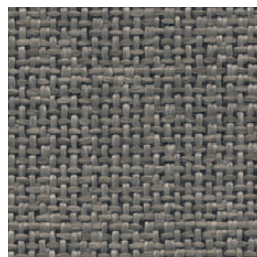
group 31 - sacco Crevin®



sacco 02



sacco 05



sacco 11

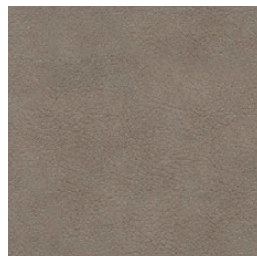
group 31 - valencia™ C5 heritage faux leather



valencia heritage 9050



valencia heritage 9051



valencia heritage 9052



valencia heritage 9055

indoor

Cushions / confección

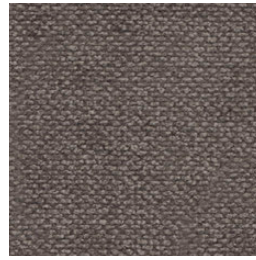
group 32 - velvety Crevin®



velvety 10



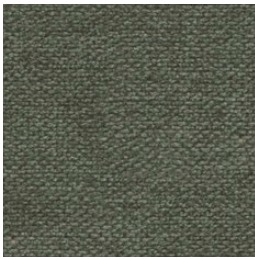
velvety 17



velvety 12



velvety 26



velvety 32

group 32 - indianskop Limonta



indianskop 15



indianskop 02



indianskop 04



indianskop 31



indianskop 46

**expormim**

Expormim S.A.  
Pol. Ind. Jaime I  
46640 Moixent (Valencia) Spain  
+34 962 295 144/5  
export@expormim.com  
www.expormim.com

Expormim USA LLC  
(212) 204-8572  
usa@expormim.com  
www.expormim.com

5/7

indoor

Cushions / confección

group 32 - clusone Limonta



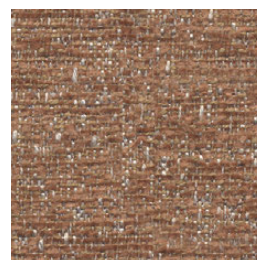
clusone 04



clusone 06



clusone 05



clusone 10

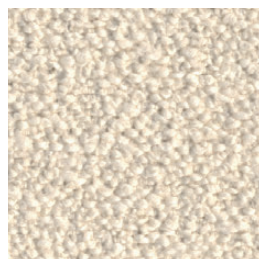


clusone 16

group 32 - ascendent reloaded Carlucci®



ascendent reloaded 094



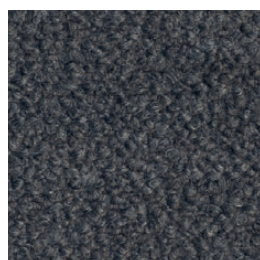
ascendent reloaded 070



ascendent reloaded 071



ascendent reloaded 030



ascendent reloaded 093



ascendent reloaded 022

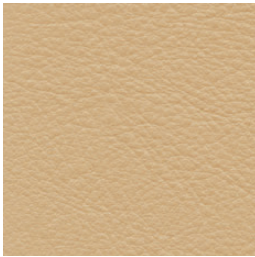


ascendent reloaded 040

indoor

Cushions / confección

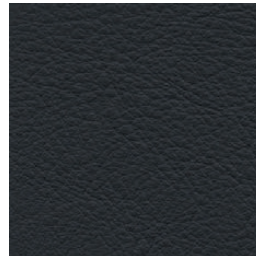
group 33 - elmosoft Elmo® leather



elmosoft 22024



elmosoft 33004



elmosoft 99999