

Bitta

Club armchair

bela rope

teak

by Rodolfo Dordoni

kettal

Club armchair bela rope teak

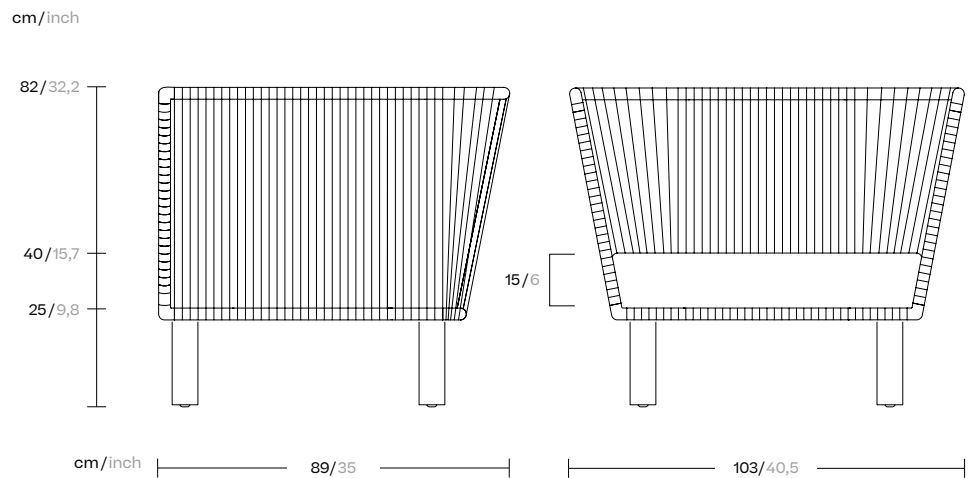
Designer
Rodolfo Dordoni

Collection
Bitta

Reference
KS7000300

1/6

Kettal Bitta is characterised by a combination of aluminium frames, seats of braided polyester and comfortable cushions, teak and stone for the table tops. My aim was to create dense braiding that would still let the air through, reminiscent of the braiding of the ropes used to moor boats (hence the name Bitta, which means 'mooring' in Italian), which makes the pieces look lightweight but, at the same time, they look just like cosy nests in natural colours to sit back and relax in.



kettal

Club armchair bela rope teak

Designer
Rodolfo Dordoni

Collection
Bitta

Reference
KS7000300

2/6

Materials

Rope
Antioxy, Resist UV, En-581-4, Easy Clean

Fabric
Heavy Load 100.000 Cycles,
Heavy Load Resistant
1000 Decitex, Kettalize-It,
Resist U.v. En-581-4, Easy Clean,
Abrasion, Resistance 30.000
Cycles, Quickdry

Aluminium
Antioxy, Heavy Load, Resistant
En-1421, Anti-Scratch, Easy
Clean, Flame Retardant M1, Eco
Friendly Ecoembes Recycling
Process Foam UNI 9175 (Classe
11M), Anti-Mold, Flame Retardant
M1

Teak
Teak A-Grade, Eco Friendly
Oeko-Tek

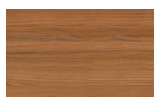
Frame Colour Options

Terrain Coatings (for Aluminium)

				
Slate Stone 01C	Mysty Smoke 02C	Ash 03C	Bone 04C	Tuff 05C
				
Wet Stone 06C	Sand Dune 07C	Dry Clay 08C	Arabica 09C	Sepia 19C
				
Rose Canyon 16C	Blossom 20C	Ruby Dust 18C	Sunset Glow 17C	Terrarosa 15C
				
Terracota 14C	Amber 13C	Ginger Root 12C	Desert Storm 11C	African Savannah 10C
				
Spring Meadow 28C	Kombu 29C	Forest Stream 27C	Sea Moss 26C	Glacier Ice 25C
				
Polar Sky 24C	Nightfall 23C	Indigo 22C	Wild Lupin 21C	
				
Galena 33C	Bronze 30C	Corten 31C	Manganese 32C	

Legs Colour Options

Teak



Teak
904

Club armchair bela rope teak

Designer
Rodolfo Dordoni

Collection
Bitta

Reference
KS7000300

3/6

Maintenance

Clean with mild soap using sponge or cloth. Be gentle while cleaning, do not scrub aggressively the fabric. Once cleaned please make sure you remove soap excess.

In case of aggressive stains clean with diluted household bleach.

Clean stains promptly. The longer it remains, more difficult will be to remove.

Once cleaned the fabric steam iron the fabric. Just use steam, be carefull NOT placing the iron directly in the fabric it will get damage.

Frame Colour Options

Bela Rope



Basalt
Z01



Shore Line
Z02



Nimbus
Z03



Polar White
Z04



Dry Vine
Z05



Reed
Z06



Dusk
Z07



Riverbed
Z08



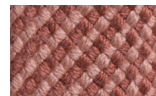
Terra Firma
Z09



Chesnut
Z10



Black Cacao
Z14



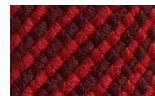
Gypsum
Z11



Dragon Tree
Z12



Sumac
Z13



Madder Root
Z15



Red Mud
Z16



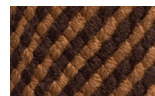
Tumeric
Z19



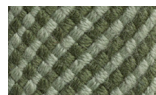
Champa
Z20



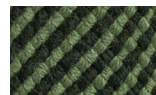
Charoli
Z18



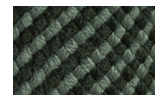
Tamarind
Z17



Bitter Gourd
Z21



Foliar
Z22



Evergreen
Z23



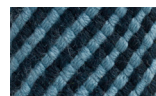
Sea Grass
Z25



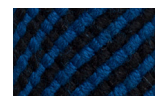
Teal
Z24



Azur
Z28



Blue Slate
Z29



Midnight
Z30



Lavandin
Z27



Tree Top
Z26

Club armchair bela rope teak

Designer
Rodolfo Dordoni

Collection
Bitta

Reference
KS7000300

4/6

Seat/Back Cushion

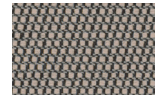
Terrain Laminate Elements



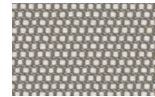
Charcoal
01L



Cumulus
02L



Fog
09L



Porous Grey
08L



Snowcap
03L



Moonstone
07L



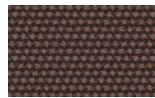
Karakum
06L



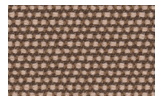
Cambium
12L



Raku
11L



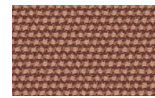
Clove
13L



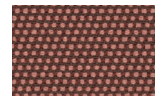
Desert Rose
14L



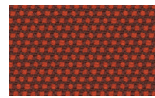
Pink Salt
15L



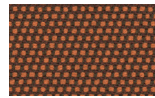
Pacific Dawn
16L



Acer
17L



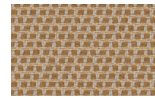
Firetail
18L



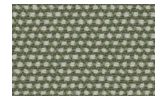
Glowing Ember
19L



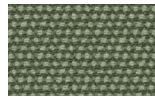
Tiger Eye
05L



Goldrush
04L



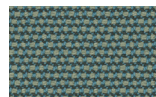
Sea Heart
22L



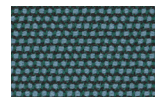
Heath
21L



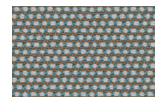
Peppercorn
20L



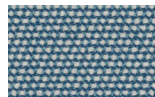
Rock Pool
23L



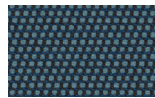
Tropic
24L



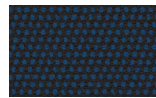
Skylark
25L



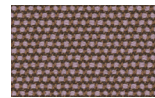
Nautica
26L



Blue Reef
27L



Cosmos
28L



Amethyst
29L

Club armchair bela rope teak

Designer
Rodolfo Dordoni

Collection
Bitta

Reference
KS7000300

5/6

Seat & Back Cushion

Tonale Lino



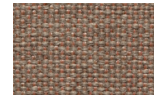
White Chia
61L-61T



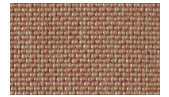
Fennel
62L-62T



Elwendia
63L-63T



Brown Mustard
64L-64T



Kampot
65L-65T



Fenugreek
66L-66T

Seat & Back Cushion

Tonale Boucle



White Poppy
81L-81T



Sesame
82L-82T



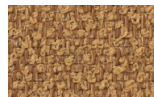
Anise
83L-83T



Dill
84L-84T



Allspice Jamaica
85L-85T



Birds Foot
86L-86T

Back Cushion

Geometric Fabrics



Umbra Brown
192



Shade Brown
152



Umbra Blue
190



Dash Blue
160



Shade Blue
150



Umbra Green
191



Shade Green
151



Umbra Red
194



Dash Red
164



Shade Red
154



Dots Blue
140



Dots Light Blue
145

Club armchair bela rope teak

Designer
Rodolfo Dordoni

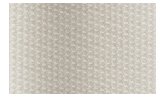
Collection
Bitta

Reference
KS7000300

6/6

Seat & Back Cushion

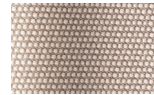
Terrain Fabrics



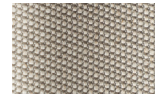
White Cliffs
290



Dry Sand
285



Porous Grey
291



Limestone
292



Fog
289



Deer
286



Wet Sand
287



Cobblestone
302



Cyprus Umber
301



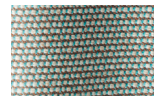
Loam
297



Charcoal
293



Arctic
295



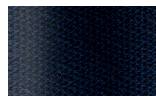
Fjord
248



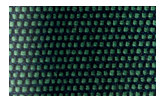
Cerulean
314



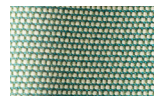
Caribbean
298



Atlantic
311



Rainforest
312



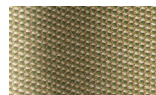
Lagoon
249



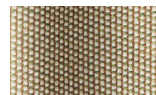
Cedar
288



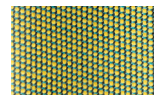
Moss
296



Olive
313



Autumn
315



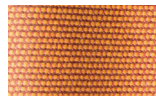
Summer Sky
317



Golden Sand
303



Flamma
304



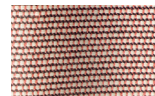
Sunrise
299



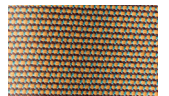
Saffron
305



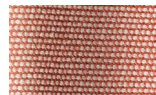
Burnt Sienna
306



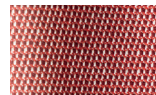
Ash Rose
294



Cooper
316



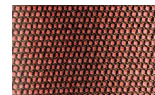
Dusk Pink
307



Flamingo
310



Coral
309



Sandstone
308