

Plumon

Dining armchair,

by Patricia Urquiola

**kettal**

# Dining armchair

Designer  
Patricia Urquiola

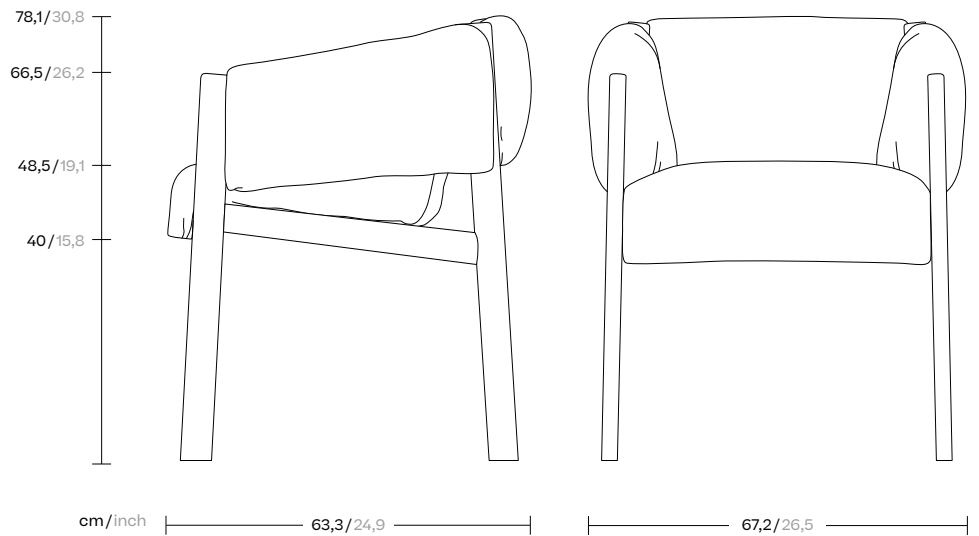
Collection  
Plumon

Reference  
KSA800100

1/4

Plumon is based on the concept of clothing, on dressing and undressing furniture. For Plumon, Urquiola designs a light structure, on which a tailored and padded dress is 'moored', wrapped. This ribbed padding, characterized by stitching, as well as being an aesthetic figure, fulfills the comfort of the product. It is the fit that guides the aesthetics. With a few simple gestures, the dress is placed on the rigid teak structure and embraces it. An extreme ease of use that becomes a real plus for an outdoor collection.

cm/inch



kettal

# Dining armchair

Designer  
Patricia Urquiola

Collection  
Plumon

Reference  
KSA800100

2/4

## Materials

---

**Fabric**  
Heavy Load 100.000 Cycles,  
Heavy Load Resistant  
1000 Decitex, Kettalize-It,  
Resist U.v. En-581-4, Easy Clean,  
Abrasion, Resistance 30.000  
Cycles, Quickdry

**Teak**  
Teak A-Grade, Eco Friendly  
Oeko-Tek

## Wood

## Legs Colour Options

---



Teak



Iroko

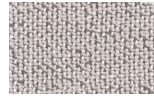
## Wood

---

## Padded dress

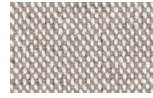


Alba  
51L-51T

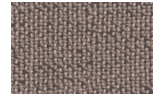


Mist  
52L-52T

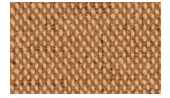
## Tonale Lino



Mud Rain  
53L-53T

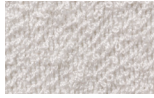


Haboob  
54L-54T

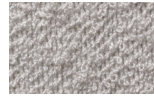


Sunstruck  
55L-55T

## Padded dress



Alba  
71L-71T



Mist  
77L-77T

## Tonale Boucle



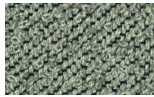
Haboob  
72L-72T



Afterglow  
73L-73T



Sunstruck  
74L-74T



Aurora  
75L-75T



Storm  
76L-76T

Designer  
Patricia Urquiola

Collection  
Plumon

Reference  
KSA800100

Maintenance

Clean with mild soap using sponge or cloth. Be gentle while cleaning, do not scrub aggressively the fabric. Once cleaned please make sure you remove soap excess.

In case of aggressive stains clean with diluted household bleach.

Clean stains promptly. The longer it remains, more difficult will be to remove.

Once cleaned the fabric steam iron the fabric. Just use steam, be carefull NOT placing the iron directly in the fabric it will get damage.

Padded dress

Terrain Elements Laminate



Charcoal  
01L



Cumulus  
02L



Fog  
09L



Porous Grey  
08L



Snowcap  
03L



Moonstone  
07L



Karakum  
06L



Cambium  
12L



Raku  
11L



Clove  
13L



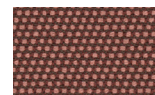
Desert Rose  
14L



Pink Salt  
15L



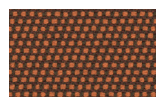
Pacific Dawn  
16L



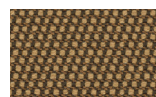
Acer  
17L



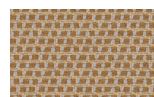
Firetail  
18L



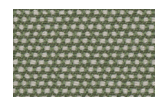
Glowing Ember  
19L



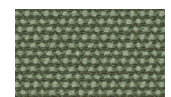
Tiger Eye  
05L



Goldrush  
04L



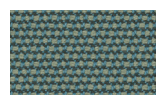
Sea Heart  
22L



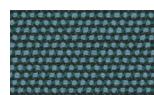
Heath  
21L



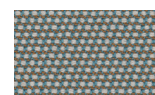
Peppercorn  
20L



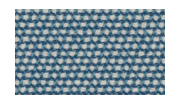
Rock Pool  
23L



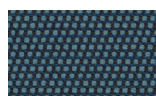
Tropic  
24L



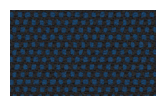
Skylark  
25L



Nautica  
26L



Blue Reef  
27L



Cosmos  
28L



Amethyst  
29L

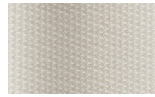
Designer  
Patricia Urquiola

Collection  
Plumon

Reference  
KSA800100

Padded dress

Terrain Fabrics Laminate



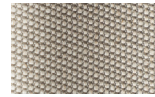
White Cliffs  
290



Dry Sand  
285



Porous Grey  
291



Limestone  
292



Fog  
289



Deer  
286



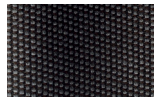
Wet Sand  
287



Cobblestone  
302



Cyprus Umber  
301



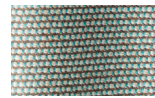
Loam  
297



Charcoal  
293



Arctic  
295



Fjord  
248



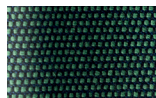
Cerulean  
314



Caribbean  
298



Atlantic  
311



Rainforest  
312



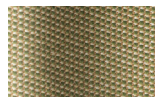
Lagoon  
249



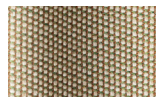
Cedar  
288



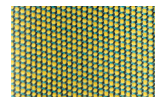
Moss  
296



Olive  
313



Autumn  
315



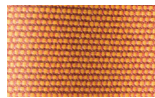
Summer Sky  
317



Golden Sand  
303



Flamma  
304



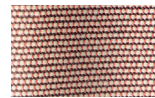
Sunrise  
299



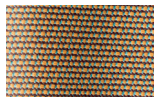
Saffron  
305



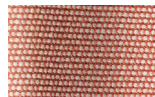
Burnt Sienna  
306



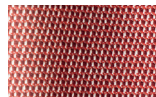
Ash Rose  
294



Cooper  
316



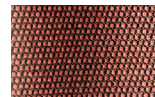
Dusk Pink  
307



Flamingo  
310



Coral  
309



Sandstone  
308