

indoor

# Armadillo Lounge chair / sillón

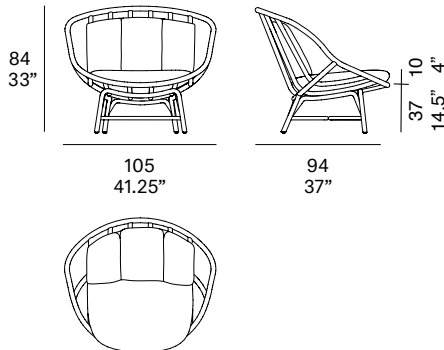
MUT Design, 2020

T030



Lounge chair with structure made of peeled and tinted natural rattan of 34 mm/1.34" diameter. Seat and backrest manufactured in peeled and tinted natural rattan of 32 mm/1.26" diameter. Finished with a three step water-based coating (dye, base coat and top coat) highly resistant to solar radiation thanks to UV filters. Possibility of customization through a wide variety of high performance technical fabrics. Protective caps with removable plastic-felt inserts.

Sillón con estructura en rattan natural pelado y tintado de 34 mm de calibre. Asiento y respaldo fabricados en rattan natural pelado y tintado de 32 mm de calibre. Acabado con recubrimiento en tres fases (tinte, fondo y acabado) con filtros UV que lo hacen altamente resistente a la radiación solar. Los acabados utilizados son en base al agua. Posibilidad de personalización mediante una amplia variedad de tejidos técnicos de altas prestaciones de uso. Tacos protectores reversibles de plástico-fieltro.



## Shipment details

Qty	1 lounge chair (1 box)
Volume	1,1 m <sup>3</sup> / 38.8 ft <sup>3</sup>
Gross weight	21 kg / 46.3 lb
Net weight	12 kg / 26.5 lb
Box dimensions (approx.)	110 x 95 x 88 cm 43.25" x 37.5" x 33.5"
Item dimensions (width x depth x height)	105 x 94 x 84 cm 41.25" x 37" x 33"
COM (1, 40 - 1,50 m / 54"-59")	cushions: 2,2 m / 2.4 yd

**Rattan**

**Tinted**



R10 natural



R03 noce



R06 verde oliva



R08 azzurro



R07 mogano



R24 cinder purple



R23 french grey



R05 grigio



R09 nero

**Lacquered**



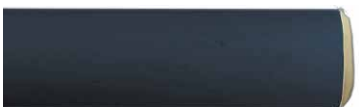
R02 bianco



R22 clay



R17 forest green



R16 navy blue



R14 japanese red



indoor

Cushions / confección

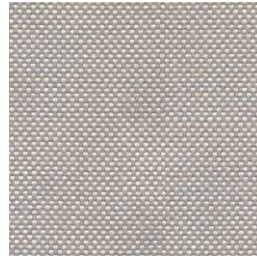
group 1 - natté Sunbrella®



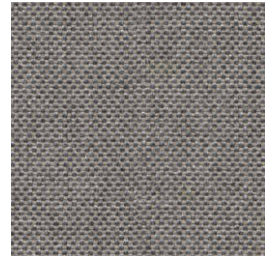
natté white



natté canvas



natté taupe chalk



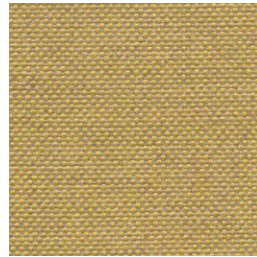
natté carbon beige



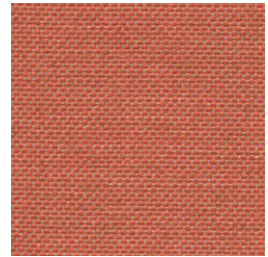
natté dark taupe



natté carbon sky



natté amber



natté flamingo

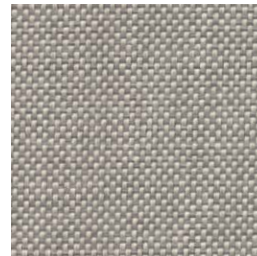
group 1 - dolce Crevin®



dolce 07



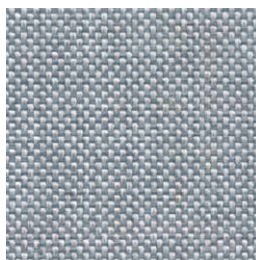
dolce 16



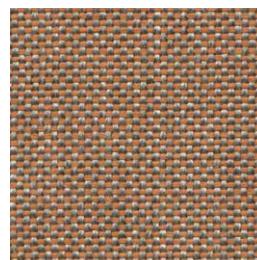
dolce 75



dolce 53



dolce 43



dolce 24



dolce 30

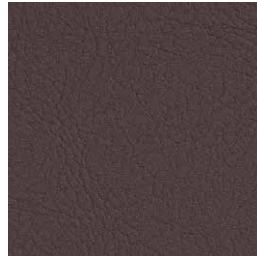
indoor

Cushions / confección

group 1 - valencia™ faux leather



valencia 1049



valencia 0020

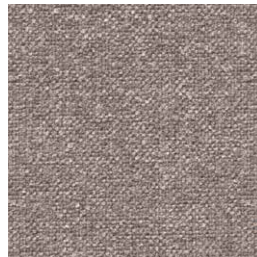


valencia 9035

group 2 - ito Crevin®



ito 05



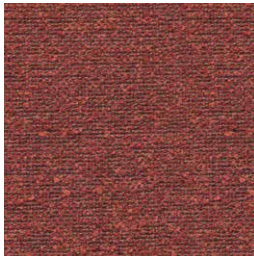
ito 18



ito 12



ito 71



ito 21



ito 20



ito 38



ito 45

group 2 - sacco Crevin®



sacco 02



sacco 05



sacco 11

**expormim**

Expormim S.A.  
Pol. Ind. Jaime I  
46640 Moixent (Valencia) Spain  
+34 962 295 144/5  
export@expormim.com  
www.expormim.com

Expormim USA LLC  
(212) 204-8572  
usa@expormim.com  
www.expormim.com

indoor

Cushions / confección

group 3 - ascendent Carlucci®



ascendent 090



ascendent 070



ascendent 071



ascendent 030



ascendent 093



ascendent 022



ascendent 040