

indoor

# Flamingo indoor

## High dining table stand with elliptical top / pie de mesa alta con tapa elíptica

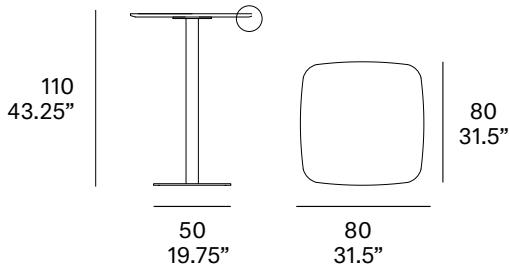
Studio expormim, 2017

T972 E 80



Tabletop made of solid wood from European oaks with 0.83" of section. Structure made of aluminum tube, finished with polyester powder. The collection is also available in a lacquered version (MDF) and in European oak plywood. Delivered unassembled.

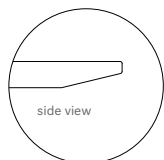
Tapa fabricada en madera maciza de roble europeo de 21 mm de sección. Estructura fabricada en tubo de aluminio, con acabado en pintura de polvo de poliéster. La colección también está disponible en versión lacada (MDF) y en tablero contrachapado de roble europeo. Se sirven desmontadas.



### Shipment details

Qty	1 dining table (2 boxes)
Volume	0,39 m <sup>3</sup> / 14 ft <sup>3</sup>
Gross weight	32 kg / 77 lb
Net weight	29 kg / 68.5 lb
Item dimensions (width x depth x height)	80 x 80 x 110 cm 31.5" x 31.5" x 43.25"

### Tabletop options:



- solid wood top 21 mm/0.83" thick.
- veneered top 21 mm/0.83" thick.
- lacquered top 21 mm/0.83" thick.

**expormim**

Expormim S.A.  
Pol. Ind. Jaime I  
46640 Moixent (Valencia) Spain  
+34 962 295 144/5  
export@expormim.com  
www.expormim.com

Expormim USA LLC  
(212) 204-8572  
usa@expormim.com  
www.expormim.com

1/4

indoor

**Solid wood top / tapa madera maciza**

---



W01 natural oak



W03 light oak



W02 white stained



W05 dark stained

**Veneered top / tapa tablero chapado**

---



W01 natural oak



W03 light oak



W02 white stained



W05 dark stained



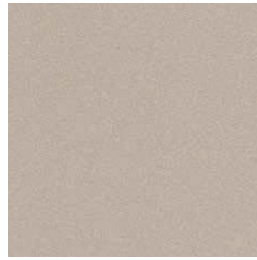
indoor

**Lacquered top / tapa lacada**

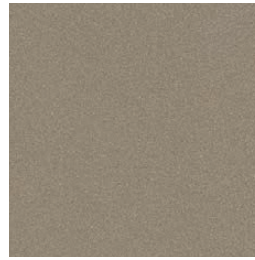
**textured lacquers**



LT24 linen



LT09 champagne



LT10 bronze



LT26 sable brown



LT11 graphite

**lacquers**



L5 taupe

indoor

**Frame / estructura**

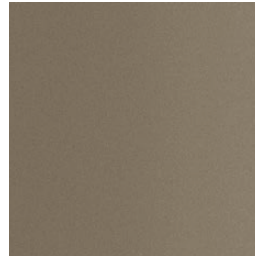
**metallic finishes- fine textured**



124 FT linen



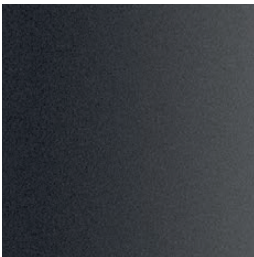
102 FT light grey



110 FT bronze



108 FT oxide



111 FT graphite