

Paladin

Parasol 330 x 330,

by Konstantin Grcic

**kettal**

# Paladin parasol 330 x 330

Designer  
Konstantin Grcic

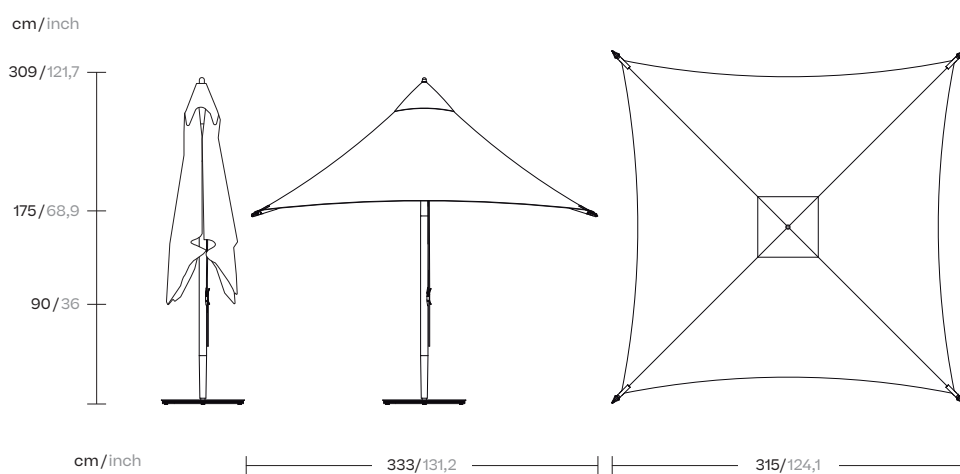
Collection  
Paladin

Reference  
KSB100100

1/3

Paladin is a wooden parasol for domestic and public use. Its canopy appears to be floating on top of an elegantly shaped mast. The design employs a mechanical principle which incorporates the tension of the canopy into its structural logic. With only the mast and four movable struts, the textile absorbs the tensile forces of the parasol when unfolded.

The mast goes right through the center of the canopy, leaving a central hole that is acting as an indirect skylight and allowing for air circulation.



kettal

# Paladin parasol 330 x 330

Designer  
Konstantin Grcic

Collection  
Paladin

Reference  
KSB100100

2/3

## Materials

Teak  
Eco-friendly, A-grade

Terrain Elements  
100% Fire Retardant Dyed  
Acrylic, IMO FTP Code 2010  
Part 8, Abrasion resistance  
(Martindale) 60.000 cycles,  
Fluorocarbon-free water  
repellent finish Mildew, chlorine  
and seawater resistant

Parallel Fabric  
Heavy Load 100.000 Cycles,  
Heavy Load Resistant 1000  
Decitex, Kettalize-It, Resist  
U.v. En-581-4, Easy Clean,  
Abrasion, Resistance 30.000  
Cycles, Quickdry

## Maintenance

Clean with mild soap using  
sponge or cloth. Be gentle  
while cleaning, do not scrub  
aggressively the fabric. Once  
cleaned please make sure you  
remove soap excess.

In case of aggressive stains  
clean with diluted household  
bleach.

Clean stains promptly. The  
longer it remains, more difficult  
will be to remove.

Once cleaned the fabric steam  
iron the fabric. Just use steam,  
be carefull NOT placing the  
iron directly in the fabric it will  
get damage.

## Fabric Colour Options

## Terrain Elements No Laminate



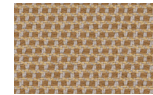
Charcoal  
01T



Cumulus  
02T



Snowcap  
03T



Goldrush  
04T



Tiger Eye  
05T



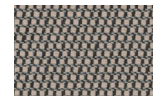
Karakum  
06T



Moonstone  
07T



Porous Grey  
08T



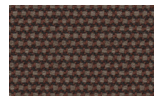
Fog  
09T



Raku  
11T



Cambium  
12T



Clove  
13T



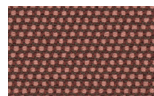
Desert Rose  
14T



Pink Salt  
15T



Pacific Dawn  
16T



Acer  
17T



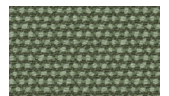
Firetail  
18T



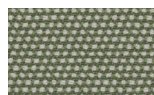
Glowing Ember  
19T



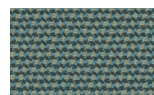
Peppercorn  
20T



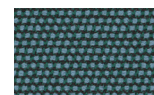
Heath  
21T



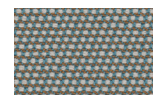
Sea Heart  
22T



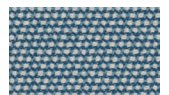
Rock Pool  
23T



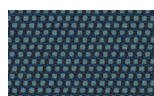
Tropic  
24T



Skylark  
25T



Nautica  
26T



Blue Reef  
27T



Cosmos  
28T



Amethyst  
29T

# Paladin parasol 330 x 330

Designer  
Konstantin Grcic

Collection  
Paladin

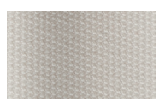
Reference  
KSB100100

3/3



## Fabric Options

## Terrain Fabrics No Laminate



White Cliffs  
258



Dry Sand  
251



Porous Grey  
259



Limestone  
260



Fog  
257



Deer  
252



Wet Sand  
254



Cobblestone  
255



Cyprus Umber  
253



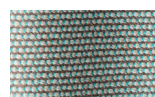
Loam  
256



Charcoal  
261



Arctic  
274



Fjord  
283



Cerulean  
280



Caribbean  
273



Atlantic  
272



Rainforest  
275



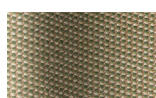
Lagoon  
276



Cedar  
279



Moss  
277



Olive  
278



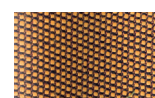
Autumn  
281



Summer Sky  
284



Golden Sand  
262



Flamma  
263



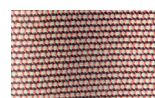
Sunrise  
264



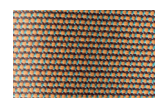
Saffron  
265



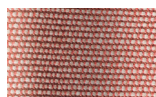
Burnt Sienna  
266



Ash Rose  
267



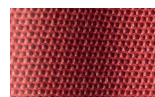
Cooper  
282



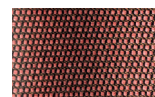
Dusk Pink  
268



Flamingo  
271



Coral  
270



Sandstone  
269

Paladin  
Modular round  
steel base,  
by Konstantin Grcic

**kettal**

# Modular round steel base

Designer  
Konstantin Grcic

Collection  
Paladin

Reference  
B1929-014-DM

1/2

Paladin is a wooden parasol for domestic and public use. Its canopy appears to be floating on top of an elegantly shaped mast. The design employs a mechanical principle which incorporates the tension of the canopy into its structural logic. With only the mast and four movable struts, the textile absorbs the tensile forces of the parasol when unfolded.

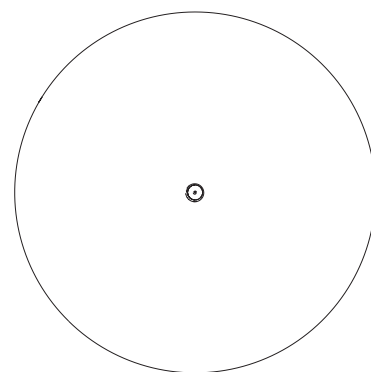
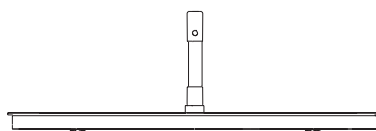
The mast goes right through the center of the canopy, leaving a central hole that is acting as an indirect skylight and allowing for air circulation.

cm/inch

26/10,2

4,2/1,6

cm/inch



Ø74/29,1



kettal

# Modular round steel base

Designer  
Kettal Studio

Collection  
Paladin

Reference  
B1929-014-DM

2/2

## Materials

---

Steel

## Weight

---

Modular round steel base  
60 Kg / 132,2Lbs

Extra weight modular round  
steel base  
40 Kg / 88,1 Lbs

Maximum 1 extra weight,  
total 100 Kg

## Other Characteristics

---

 Adjustable legs

## Maintenance

---

Clean with mild soap using sponge or cloth. Be gentle while cleaning, do not scrub aggressively the fabric. Once cleaned please make sure you remove soap excess.

In case of aggressive stains clean with diluted household bleach.

Clean stains promptly. The longer it remains, more difficult will be to remove.

Once cleaned the fabric steam iron the fabric. Just use steam, be carefull NOT placing the iron directly in the fabric it will get damage.

## Finish

---

## Steel



Steel