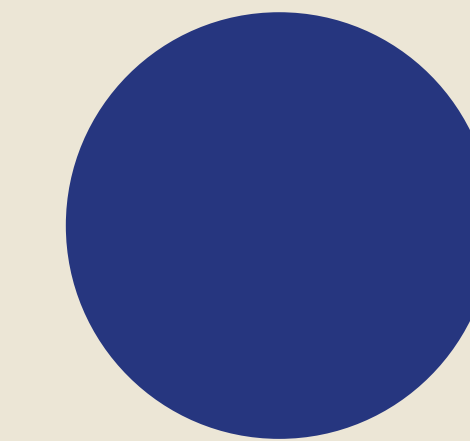


MISSANA



A QUICK LOOK



AT MISSANA'S WORLD

# OUR

We were born in a land through which the sun of the Mediterranean flows while being connected by the sea and surrounded by nature. Our roots define this essence.

# ESSENCE



# OUR

We call our company's philosophy "Made locally". It is known for having a supply chain located in areas less than 60km from our facilities. This is an indication of our intentions, respect and admiration for the local products and for the local artisans.

# VISION



# OUR

Our collection is the result of carrying out a process of research and development when each item is produced with emotion, passion and affection. Every product reflects the essence of our philosophy: optimism, craftsmanship and colour.

# PRODUCTS

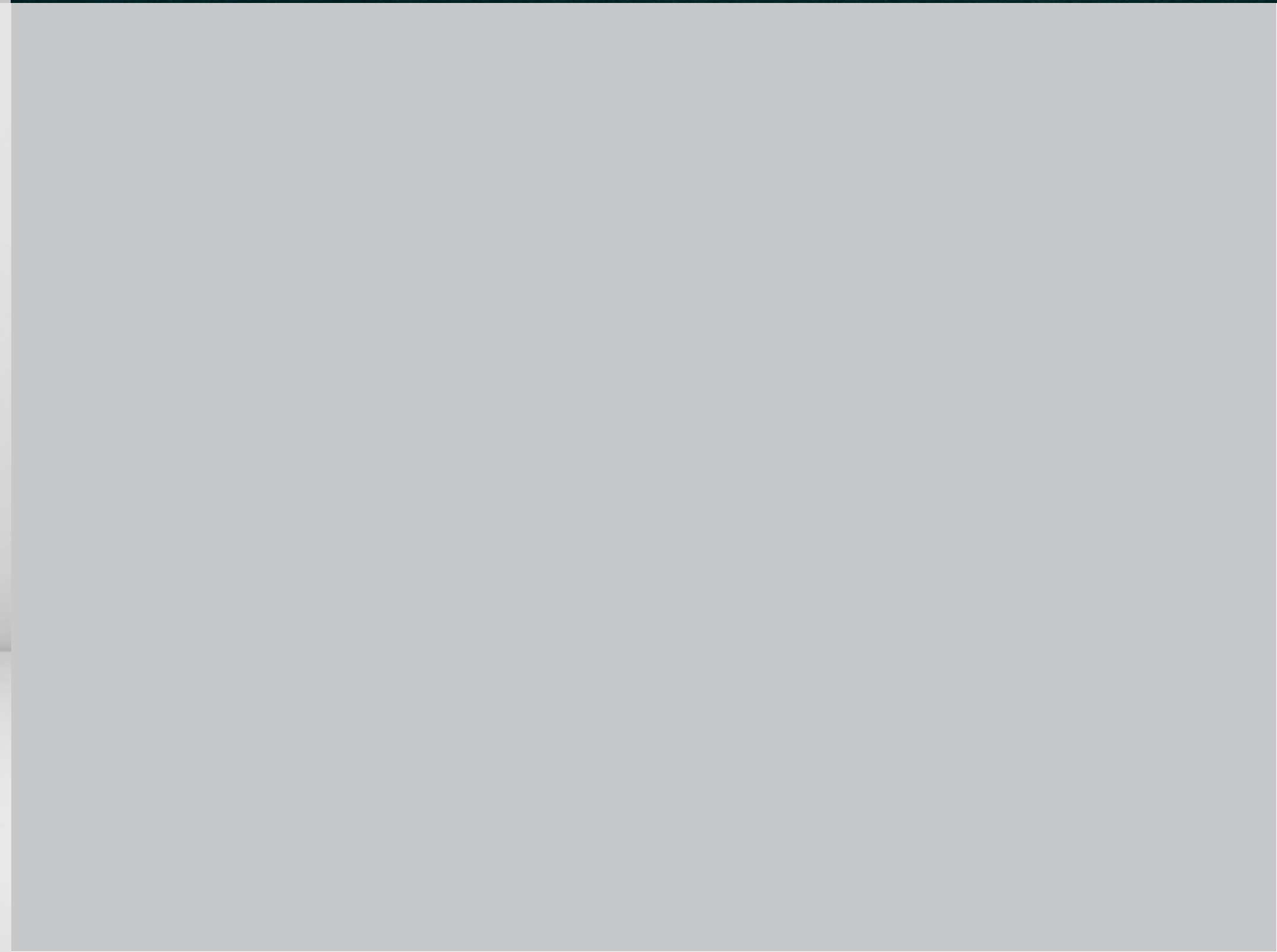




PREMIUM  
MATERIALS



DESIGN AND  
COMFORT

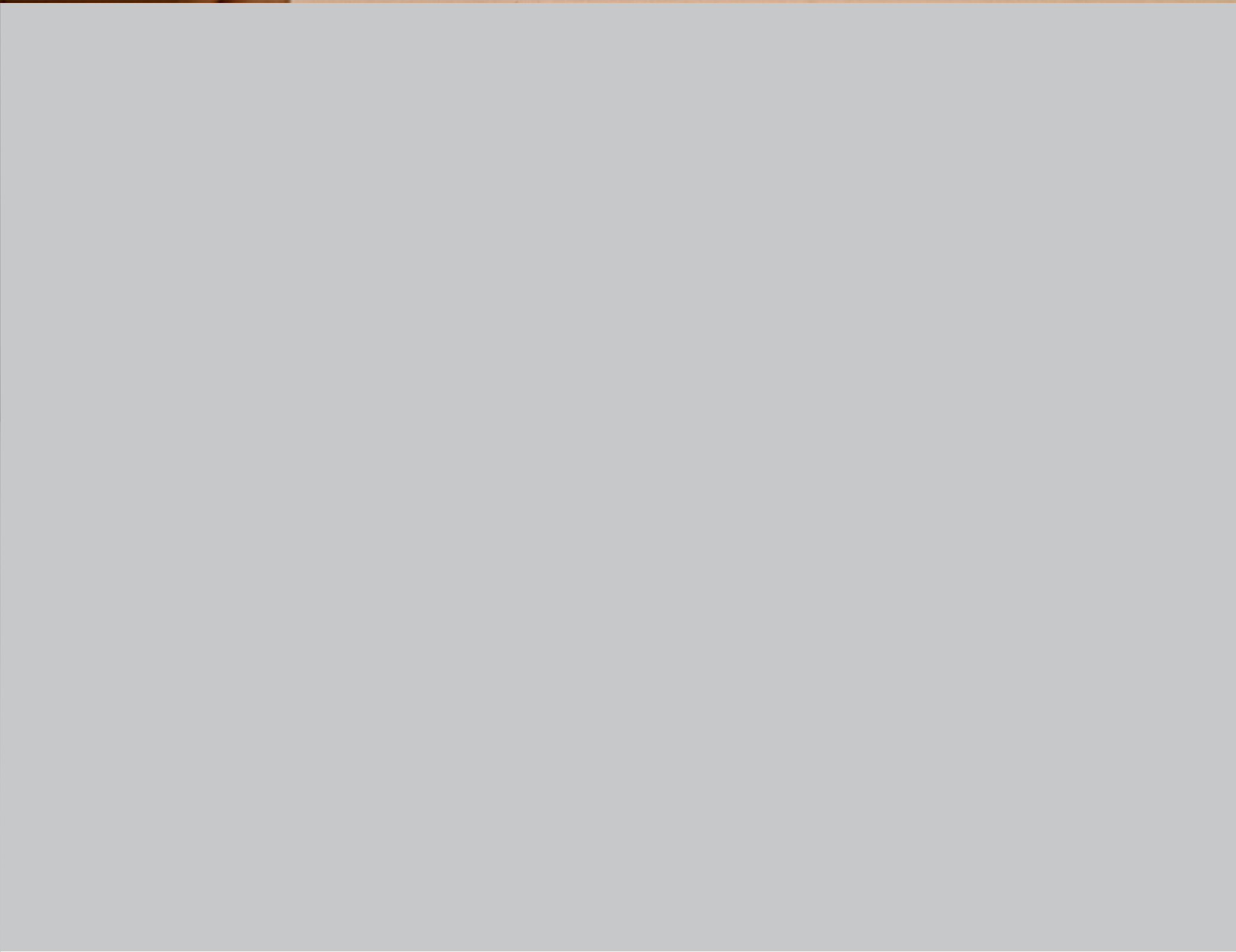




HANDMADE IN  
SPAIN



INNOVATIVE  
DESIGNS



# OUR

# PROJECTS

Some of the most renowned companies have used our products for their projects. Our handcrafted furniture is designed for contract, hospitality and household projects.

Museum  
Reina Sofia.  
Madrid, Spain.





Starbucks.  
Istanbul, Turkey.




The  
Perch

The Wing.  
New York, USA.

EXIT

The Wing.  
Washington DC,  
USA.



The image shows a bright, modern cafe interior. The walls are white with horizontal shiplap. In the foreground, there are several wooden tables with green upholstered chairs. A metal shelving unit with a mesh front holds several bottles of wine. A large circular graphic is overlaid on the image, containing the text 'Vino Veritas. Oslo, Norway.' The background shows a doorway leading to another part of the cafe, with more tables and chairs visible. There are many potted plants throughout the space, including a large hanging plant on the left and several on the windowsill on the right. A small lantern-style light fixture hangs from the ceiling.

Vino Veritas.  
Oslo, Norway.

A modern, industrial-style lounge area. The space features a high ceiling with exposed metal beams and a grid of recessed lighting. Two large, weathered concrete pillars stand prominently. The walls are a mix of bright yellow and dark blue. In the foreground, a large blue rug with a white starry pattern is laid out. Several blue, shell-shaped armchairs with wooden legs are arranged in a circle. In the background, there are grey sofas, a yellow curved sofa, and a bar area with a pink and purple neon light. A white circular callout box is overlaid on the left side of the image.

Hotel Room  
Mate Bruno.  
Rotterdam,  
The Netherlands.



Vibe Hotels.  
Perth,  
Australia.

# FINISHING

We work with the best fabric suppliers such as Kvadrat, Gabriel, Rohi, Camira, Svensson, Romo among others. We can also upholster our designs with Customer's Own Material.

OUR



OUR

3.500

PRODUCTS  
MANUFACTURED  
PER YEAR

14.000

METRES OF FABRIC  
USED PER YEAR

+40

COUNTRIES WHERE  
MISSANA IS PRESENT

+25

WORKERS ARE  
PART OF OUR TEAM

KEY DATA



THANK

YOU

MISSANA

[www.missana.es](http://www.missana.es)

Find us  
on Instagram:  
[@missanadesign](https://www.instagram.com/missanadesign)