

IDRA

FICHA TÉCNICA



kendo

kendo

IDRA

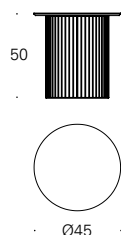
PerezOchando

Colección de mesas de centro, auxiliares y de noche compuesta por tapa circular en MDF lacado, en chapa de roble o de nogal, con cristal negro, cerámica statuario o compacto pizarra. Con estructura metálica termolacada negro o blanco microtexturado.

Collection of coffee, occasional and bedside tables comprising a lacquered MDF, oak veneer or walnut, with black glass, statuario ceramic or slate compact top. The metal structure is micro-textured black or white thermo-lacquered.

Mesas auxiliares / Mesitas de noche

Occasional tables / Bedside tables



IDRA-45R

Ø45x50 cm

0,151 m³ 9 Kg

Tapa laca / Estructura termolacada negro microtexturado
Lacquer top / Micro-textured black thermo-lacquered structure

Tapa roble / Estructura termolacada negro microtexturado
Oak top / Micro-textured black thermo-lacquered structure

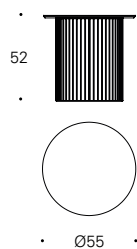
Tapa nogal / Estructura termolacada negro microtexturado
Walnut top / Micro-textured black thermo-lacquered structure

Tapa compacto pizarra / Estructura termolacada negro microtexturado
Slate compact top / Micro-textured black thermo-lacquered structure

Tapa cristal negro / Estructura termolacada negro microtexturado
Black glass top / Micro-textured black thermo-lacquered structure

Tapa cerámica statuario / Estructura termolacada negro microtexturado
Statuario ceramic top / Micro-textured black thermo-lacquered structure

Opción estructura termolacada blanco microtexturado*
Micro-textured white thermo-lacquered structure option*



IDRA-55R

Ø55x52 cm

0,202 m³ 12 Kg

Tapa laca / Estructura termolacada negro microtexturado
Lacquer top / Micro-textured black thermo-lacquered structure

Tapa roble / Estructura termolacada negro microtexturado
Oak top / Micro-textured black thermo-lacquered structure

Tapa nogal / Estructura termolacada negro microtexturado
Walnut top / Micro-textured black thermo-lacquered structure

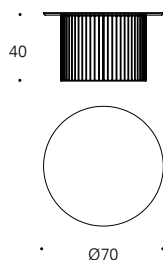
Tapa compacto pizarra / Estructura termolacada negro microtexturado
Slate compact top / Micro-textured black thermo-lacquered structure

Tapa cristal negro / Estructura termolacada negro microtexturado
Black glass top / Micro-textured black thermo-lacquered structure

Tapa cerámica statuario / Estructura termolacada negro microtexturado
Statuario ceramic top / Micro-textured black thermo-lacquered structure

Opción estructura termolacada blanco microtexturado*
Micro-textured white thermo-lacquered structure option*

Mesas de centro
Coffee tables



IDRA-74R

Ø70x40 cm

0,273 m³ 13 Kg

Tapa laca / Estructura termolacada negro microtexturado
Lacquer top / Micro-textured black thermo-lacquered structure

Tapa roble / Estructura termolacada negro microtexturado
Oak top / Micro-textured black thermo-lacquered structure

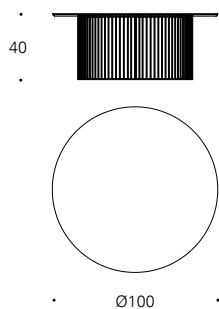
Tapa nogal / Estructura termolacada negro microtexturado
Walnut top / Micro-textured black thermo-lacquered structure

Tapa compacto pizarra / Estructura termolacada negro microtexturado
Slate compact top / Micro-textured black thermo-lacquered structure

Tapa cristal negro / Estructura termolacada negro microtexturado
Black glass top / Micro-textured black thermo-lacquered structure

Tapa cerámica statuario / Estructura termolacada negro microtexturado
Statuario ceramic top / Micro-textured black thermo-lacquered structure

Opción estructura termolacada blanco microtexturado*
Micro-textured white thermo-lacquered structure option*



IDRA-04R

Ø100x40 cm

0,527 m³ 29 Kg

Tapa laca / Estructura termolacada negro microtexturado
Lacquer top / Micro-textured black thermo-lacquered structure

Tapa roble / Estructura termolacada negro microtexturado
Oak top / Micro-textured black thermo-lacquered structure

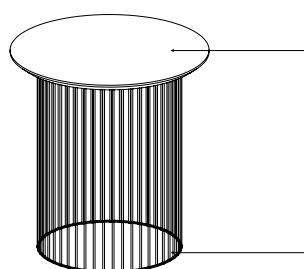
Tapa nogal / Estructura termolacada negro microtexturado
Walnut top / Micro-textured black thermo-lacquered structure

Tapa compacto pizarra / Estructura termolacada negro microtexturado
Slate compact top / Micro-textured black thermo-lacquered structure

Tapa cristal negro / Estructura termolacada negro microtexturado
Black glass top / Micro-textured black thermo-lacquered structure

Tapa cerámica statuario / Estructura termolacada negro microtexturado
Statuario ceramic top / Micro-textured black thermo-lacquered structure

Opción estructura termolacada blanco microtexturado*
Micro-textured white thermo-lacquered structure option*



Tapa - Laca, roble, nogal, compacto pizarra,
cristal negro, cerámica statuario
Top - Lacquer, oak, walnut, slate compact,
black glass, statuario ceramic

Estructura - Metal termolacado
negro o blanco microtexturado
Structure - Black or white thermo-lacquered
micro-textured metal

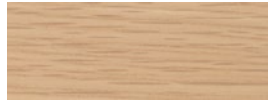
ACABADOS FINISHES

Colores aproximados
Approximate colours

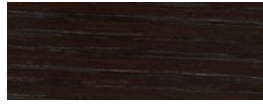
MADERA | WOOD



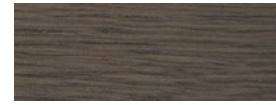
Roble natural
Natural oak



Roble claro
Light oak



Roble teñido wengue
Wengue stained oak



Roble teñido ceniza
Ash stained oak



Roble teñido tostado
Toasted stained oak

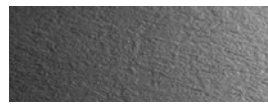


Nogal natural
Natural walnut

CRISTAL | GLASS



Cristal negro
Black glass



Compacto pizarra
Slate compact



Cerámica statuario
Statuario ceramic

LACA MATE | MATT LACQUER



Piedra
Stone
—
RAL 7044



Arena
Sand
—
NCS S2005-Y20R



Visión
Taupe
—
NCS S4005-Y20R



Grafito
Graphite
—
RAL 7022



Niebla
Fog
—
NCS S5005-B20G



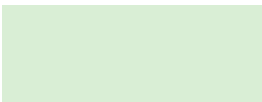
Océano
Ocean
—
NCS S7010 B10G



Pizarra
Slate
—
NCS S8500-N



Negro
Black
—



Menta
Mint
—
NCS S3010 G20Y



Oliva
Olive
—
NCS S6010 G10Y



Bosque
Forest
—
NCS S7010-B90G



Blanco
White
—



Teja
Tile
—
NCS S5030 Y90R

Opcionalmente se pueden solicitar otros colores de laca referenciados según la carta RAL o carta NCS.

Alternatively you can request other colours of lacquer referenced according to RAL or NCS card.