

## CITY

SQUARE COFFEE TABLE

REF.: 78353



### Materials

Powder coated aluminium structure. Compact, porcelanic top.

### Dimensions

Length x width x height:

100 x 100 x 20,2 cm. / 39.4 x 39.4 x 7.9 in.

Porcelanic weight: 39,2 kg / 86,4 lb

Compact weight: 28,2 kg / 62,2 lb

Volume: 0,42 m<sup>3</sup>

### Finish

Frame color

Sand 74



Cream 34



Gunmetal gray 56



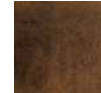
Porcelanic:

Natural white 82

Black 84



Corten 83



Light gray 80

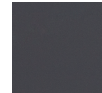


Gray lava 82



Compact:

Black



Beige

