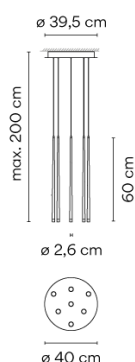
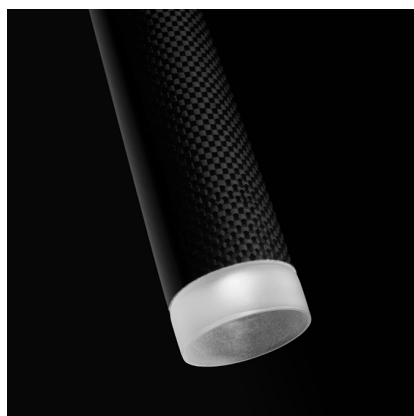


Design By Jordi Vilardell

Hanging lamp in seven units giving a soft light ideal for high ceilings. Designed by Jordi Vilardell. With patterned glass diffuser and finished in white lacquered fibre or black carbon fibre. LED light source.

Model Sheet



Optional : Extra cable length
Min. quantity, upcharge and extra lead time apply [EN]

Finish	04 Black carbon fiber RAL 9005
	03 White lacquer fiber RAL 9016
LED temperature color	2700 K
Dimming	1-10V PUSH
	Optional DALI or Casambi Min. quantity, upcharge and extra lead time apply [EN]

Installation type Surface Canopy

Materials Diffuser: Pressed Glass
Body: Fiberglass / Carbon Fiber
Canopy Plate: Steel

Light source 7 x LED 2,1W 700mA
F

LED CRI>90 1395 lm 95
2700 K

Driver CC - Constant Current 700
110~240 V 50/60 HZ

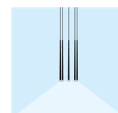


Application Hanging lamps

Packaging 1 Box
0.78 m x 0.45 m x 0.255 m
Gross weight 10
Net weight 7
Vol. 0.0895

Lighting effect**General Lighting**

Lamp for general lighting with an opaque shade and distributing light upwards and/or downwards mainly.

**Photometric Data****Other Applications**