

indoor

Lapala indoor Hand-woven dining armchair / sillón comedor tejido

Lievore Altherr Molina, 1998/2023

T596

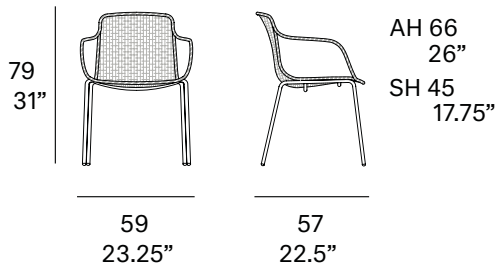


Dining armchair made of stainless steel tube. Seat and backrest manufactured in peeled and tinted natural rattan. Finished with a three step water-based coating (dye, base coat and top coat) highly resistant to solar radiation thanks to UV filters. Legs made of lacquered stainless steel tube. Stackable.

Sillón comedor fabricado en tubo de acero inoxidable. Asiento y respaldo fabricados en rattan natural pelado y tintado. Acabado con recubrimiento en tres fases (tinte, fondo y acabado) con filtros UV que lo hacen altamente resistente a la radiación solar. Patas fabricadas en tubo de acero inoxidable lacado. Apilable.

Shipment details

Qty	2 dining armchairs (1 box)
Volume	0,39 m ³ / 13.7 ft ³
Gross weight	18 kg / 39.6 lb
Net weight (x1)	7 kg / 15.4 lb
Item dimensions (width x depth x height)	59 x 57 x 79 cm 23.25" x 22.5" x 31"



indoor

Rattan

tinted



R10 natural

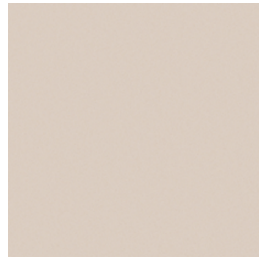


Legs / patas

metallic finishes / metales



102 FT light grey
fine textured



124 FT linen
fine textured



110 FT bronze
fine textured



108 FT oxide
fine textured



111 FT graphite
fine textured