

Roll  
Stool,  
by Patricia Urquiola

**kettal**

# Stool

Designer  
Patricia Urquiola

Collection  
Roll

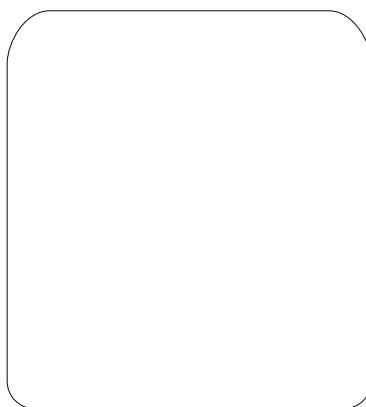
Reference  
KS2301100

1/2

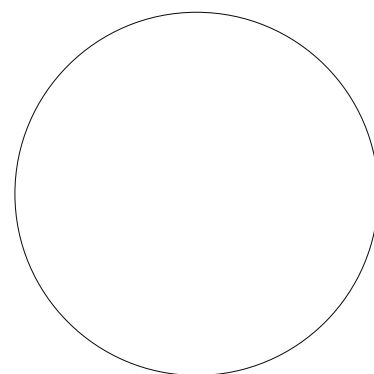
Essential lines and colors define the soft volume of the Roll stool. It is a very versatile seat that provides a more informal language to collective environments. It is available in one seat with a small support backrest that provides comfort while not detracting from the dynamism and functionality of the seat. The graphic, bold and colorful charm of the Terrain Elements also means that it can also be used in outdoor spaces.

cm/inch

42/16,5



cm/inch



Ø40/15,7



kettal

# Stool

Designer  
Patricia Urquiola

Collection  
Roll

Reference  
KS2301100

2/2

## Materials

Terrain Elements  
100% Dyed Acrylic, Oil Resistant,  
Resist U.v. En-581-4, Easy Clean,  
Abrasion Resistance 30.000  
Cycles, Quickdry

## Fabric Colour Options

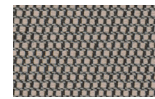
## Terrain Laminate Elements



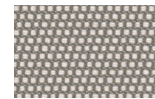
Charcoal  
01L



Cumulus  
02L



Fog  
09L



Porous Grey  
08L



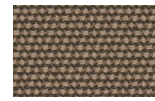
Snowcap  
03L



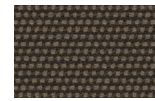
Moonstone  
07L



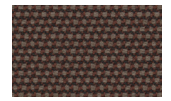
Karakum  
06L



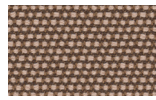
Cambium  
12L



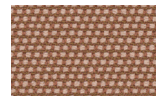
Raku  
11L



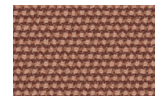
Clove  
13L



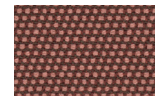
Desert Rose  
14L



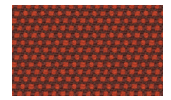
Pink Salt  
15L



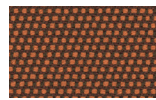
Pacific Dawn  
16L



Acer  
17L



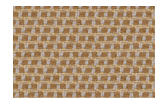
Firetail  
18L



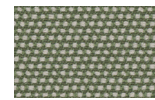
Glowing Ember  
19L



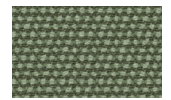
Tiger Eye  
05L



Goldrush  
04L



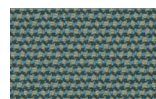
Sea Heart  
22L



Heath  
21L



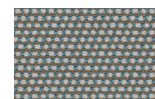
Peppercorn  
20L



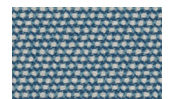
Rock Pool  
23L



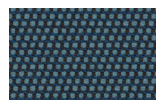
Tropic  
24L



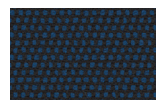
Skylark  
25L



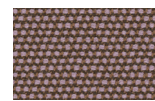
Nautica  
26L



Blue Reef  
27L



Cosmos  
28L



Amethyst  
29L

## Maintenance

Clean with mild soap using sponge or cloth. Be gentle while cleaning, do not scrub aggressively the fabric. Once cleaned please make sure you remove soap excess.

In case of aggressive stains clean with diluted household bleach.

Clean stains promptly. The longer it remains, more difficult will be to remove.

Once cleaned the fabric steam iron the fabric. Just use steam, be carefull NOT placing the iron directly in the fabric it will get damage.