

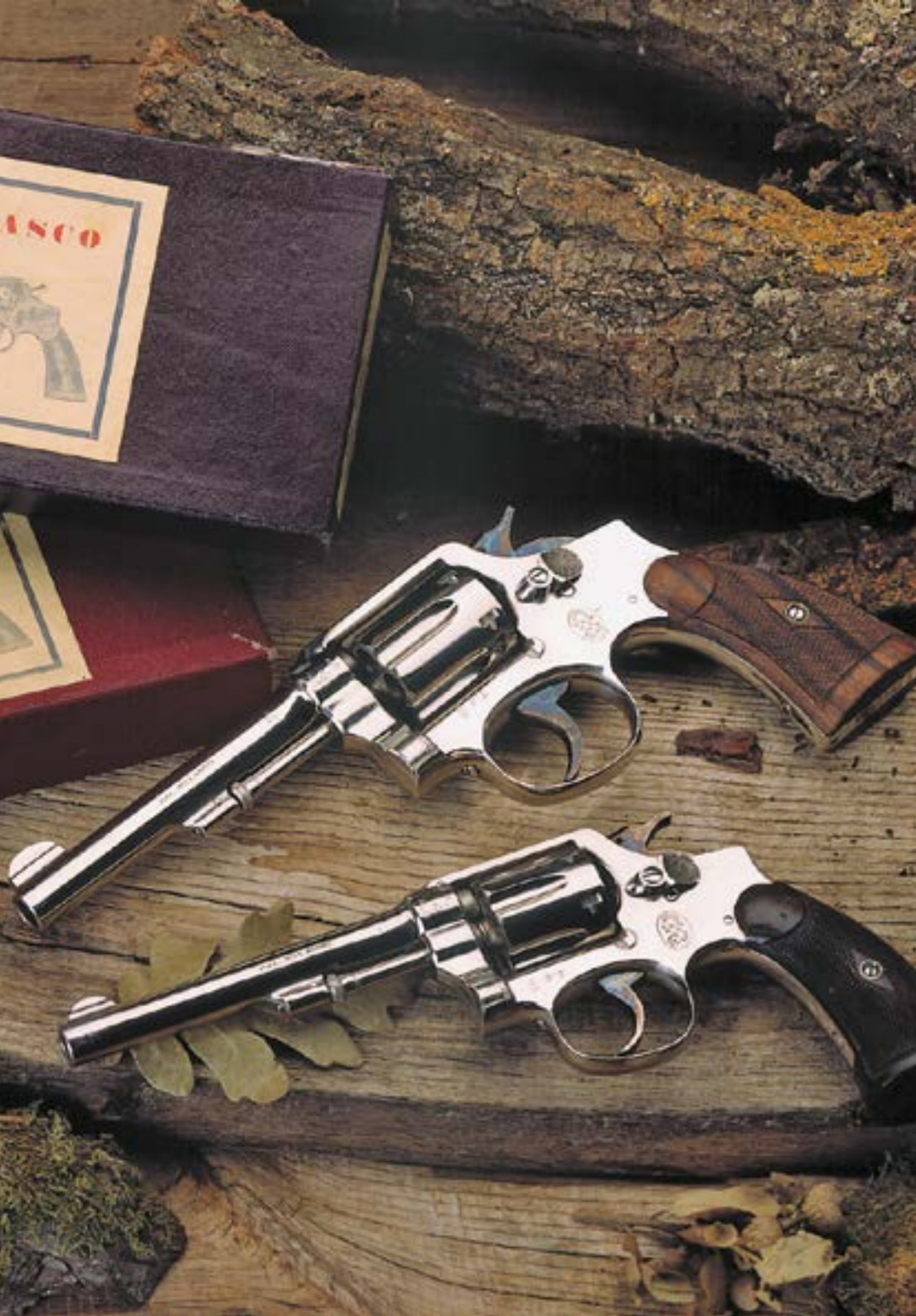


# EL CASCO

SINCE 1920



CATALOGUE  
DESK ACCESSORIES



# 1920

Welcome to El Casco, makers of luxury desk accessories. Our products are some of the finest in the world, and are handmade in the heart of picturesque Basque Country, in Northern Spain. First established in 1920 as makers of firearms, El Casco converted their experience into designing and manufacturing fine, luxury desk accessories at the end of the Spanish civil war.

Each and every piece is made with care, polished a minimum of six times and are also plated with three different metals.

# 1930

Not a single rivet is used in the production of our articles - and therefore can be completely disassembled. This unique way of working allows our customers to enjoy their El Casco piece generation after generation. El Casco products come with a lifetime guarantee against defective workmanship. This is how confident we are of the quality of our work.

Our beautiful, classic designs, some of which date from the 1930's, form part of an exquisite collection made for everyone.





**Staplers 06 - 17**



**Pencil Sharpeners 18 - 25**



**Tape Dispensers 32 - 35**



**Pencil Pots 36 - 41**



**Perforators 26 - 31**



**Other Accessories 42 - 79**



## STAPLERS

Designs that have withstood the test of time, passed on generation after generation. This year El Casco celebrates its 100-year anniversary. Discover El Casco's line of iconic staplers. Tradition, design, precision, craftsmanship, style and functionality on your desk.

Hand polished and finished in different combinations of bright chrome, 23kt gold, black and grey in order to suit all tastes, styles and desks.



**STAPLER M-5 L**  
**23KT GOLD**  
**CODE 1005LAC**

- Desk stapler in 23k gold plated finish.
- Hand polished
  - Manufactured in steel
  - Copper, nickel and 23k gold plated
  - Up to 25 sheet capacity
  - Paper insertion depth: 50 mm
  - Load capacity: 50 staples
  - Uses 24/6 staples (1 box included)
  - Dimensions: 115 x 51 x 95 mm



**STAPLER M-5 CT**  
**SHINY CHROME**  
**CODE 1005CRC**

- Desk stapler in shiny chrome plated finish.
- Hand polished
  - Manufactured in steel.
  - Copper, nickel and chrome plated
  - Up to 25 sheet capacity
  - Paper insertion depth: 50 mm
  - Load capacity: 50 staples
  - Uses 24/6 staples (1 box included)
  - Dimensions: 115 x 51 x 95 mm



**STAPLER M-1 CG**  
**SHINY CHROME & GREY**  
**CODE 1001GRC**

- Desk stapler in shiny chrome and grey lacquered finish.
- Hand polished
  - Manufactured in steel and zamak
  - Grey lacquered body
  - Copper, nickel and chrome plated
  - Up to 25 sheet capacity
  - Paper insertion depth: 50 mm
  - Load capacity: 50 staples
  - Uses 24/6 staples (1 box included)
  - Dimensions: 115 x 51 x 95 mm



**STAPLER M-1 LN**  
**23KT GOLD & BLACK**  
**CODE 1001LNC**

- Desk stapler in 23k gold plated and black lacquered finish.
- Hand polished
  - Manufactured in steel and zamak
  - Black lacquered body
  - Copper, nickel and 23k gold plated
  - Up to 25 sheet capacity
  - Paper insertion depth: 50 mm
  - Load capacity: 50 staples
  - Uses 24/6 staples (1 box included)
  - Dimensions: 115 x 51 x 95 mm



**STAPLER M-1 CN**  
**SHINY CHROME & BLACK**  
**CODE 1001CNC**

- Desk stapler in shiny chrome and black lacquered finish.
- Hand polished
  - Manufactured in steel and zamak
  - Black lacquered body
  - Copper, nickel and chrome plated
  - Up to 25 sheet capacity
  - Paper insertion depth: 50 mm
  - Load capacity: 50 staples
  - Uses 24/6 staples (1 box included)
  - Dimensions: 115 x 51 x 95 mm



**STAPLER M-1 CB**  
**SHINY CHROME & WHITE**  
**CODE 1001CBC**

Desk stapler in shiny chrome and white lacquered finish.

- Hand polished
- Manufactured in steel and zamak
- White lacquered body
- Copper, nickel and chrome plated
- Up to 25 sheet capacity
- Paper insertion depth: 50 mm
- Load capacity: 50 staples
- Uses 24/6 staples (1 box included)
- Dimensions: 115 x 51 x 95 mm



**STAPLER M-1 CO**  
**SHINY CHROME & RED**  
**CODE 1001COC**

Desk stapler in shiny chrome and red lacquered finish.

- Hand polished
- Manufactured in steel and zamak
- Red lacquered body
- Copper, nickel and 23k gold plated
- Up to 25 sheet capacity
- Paper insertion depth: 50 mm
- Load capacity: 50 staples
- Uses 24/6 staples (1 box included)
- Dimensions: 115 x 51 x 95 mm



**STAPLER M-1 CZ**  
**SHINY CHROME & BLUE**  
**CODE 1001CZC**

Desk stapler in shiny chrome and blue lacquered finish.

- Hand polished
- Manufactured in steel and zamak
- Blue lacquered body
- Copper, nickel and chrome plated
- Up to 25 sheet capacity
- Paper insertion depth: 50 mm
- Load capacity: 50 staples
- Uses 24/6 staples (1 box included)
- Dimensions: 115 x 51 x 95 mm



**STAPLER M-10 CG**  
**SHINY CHROME & GREY**  
**CODE 1010GRC**

Desk stapler in shiny chrome plated and grey lacquered finish.

- Hand polished
- Manufactured in steel and zamak
- Grey lacquered body
- Copper, nickel and chrome plated
- Up to 25 sheet capacity
- Paper insertion depth: 80 mm
- Load capacity: 100 staples
- Uses 24/6 staples (1 box included)
- Dimensions: 132 x 57 x 95 mm



**STAPLER M-10 LN**  
**23KT GOLD & BLACK**  
**CODE 1010LNC**

Desk stapler in 23k gold plated and black lacquered finish.

- Hand polished
- Manufactured in steel and zamak
- Black lacquered body
- Copper, nickel and 23k gold plated
- Up to 25 sheet capacity
- Paper insertion depth: 80 mm
- Load capacity: 100 staples
- Uses 24/6 staples (1 box included)
- Dimensions: 132 x 57 x 95 mm



**STAPLER M-10 CN**  
**SHINY CHROME & BLACK**  
**CODE 1010CNC**

Desk stapler in shiny chrome plated and black lacquered finish.

- Hand polished
- Manufactured in steel and zamak
- Black lacquered body
- Copper, nickel and chrome plated
- Up to 25 sheet capacity
- Paper insertion depth: 80 mm
- Load capacity: 100 staples
- Uses 24/6 staples (1 box included)
- Dimensions: 132 x 57 x 95 mm





**STAPLER M-15 L**  
**23KT GOLD**  
**CODE 1015LAC**

- Desk stapler in 23k gold plated finish.
- Hand polished
  - Manufactured in steel
  - Copper, nickel and 23k gold plated
  - Up to 25 sheet capacity
  - Paper insertion depth: 80 mm
  - Load capacity: 100 staples
  - Uses 24/6 staples (1 box included)
  - Dimensions: 132 x 57 x 95 mm



**STAPLER M-15 CT**  
**SHINY CHROME**  
**CODE 1015CRC**

- Desk stapler in shiny chrome plated finish.
- Hand polished
  - Manufactured in steel
  - Copper, nickel and chrome plated
  - Up to 25 sheet capacity
  - Paper insertion depth: 80 mm
  - Load capacity: 100 staples
  - Uses 24/6 staples (1 box included)
  - Dimensions: 132 x 57 x 95 mm



**STAPLER M-30 CG**  
**SHINY CHROME & GREY**  
**CODE 1030GRC**

- Heavy duty stapler in shiny chrome plated and grey lacquered finish.
- Hand polished
  - Manufactured in steel and zamak
  - Grey lacquered body
  - Copper, nickel and chrome plated
  - Up to 90 sheet capacity
  - Paper insertion depth: 80 mm
  - Load capacity: 100 staples
  - Uses n.24 or n.27 staples
  - Dimensions: 150 x 58 x 108 mm



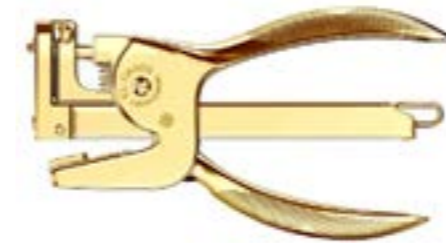


**STAPLER PLIER M-83 CR**  
**SATIN CHROME**

**CODE 1083CRC**

Plier stapler in matt chrome plated finish.

- Hand polished
- Manufactured in steel
- Copper, nickel and matt chrome plated
- Up to 25 sheet capacity
- Paper insertion depth: 35 mm
- Load capacity: 100 staples
- Uses n.23 staples (1 box included)
- Dimensions: 185 x 83 x 32 mm



**STAPLER PLIER M-85 L**  
**23KT GOLD**

**CODE 1085LAC**

Plier stapler in 23k gold plated finish.

- Hand polished
- Manufactured in steel
- Copper, nickel and 23k gold plated
- Up to 25 sheet capacity
- Paper insertion depth: 35 mm
- Load capacity: 100 staples
- Uses n.23 staples (1 box included)
- Dimensions: 185 x 83 x 32 mm



**STAPLER PLIER M-85 CT**  
**SHINY CHROME**

**CODE 1085CRC**

Plier stapler in shiny chrome plated finish.

- Hand polished
- Manufactured in steel
- Copper, nickel and chrome plated
- Up to 25 sheet capacity
- Paper insertion depth: 35 mm
- Load capacity: 100 staples
- Uses n.23 staples (1 box included)
- Dimensions: 185 x 83 x 32 mm



**STAPLER M-88 CR**  
**SHINY CHROME**

**CODE 3088CRB**

Plier stapler in shiny chrome.

- Hand polished
- Manufactured in steel
- Copper, nickel and chrome plated
- Up to 25 sheet capacity
- Paper insertion depth: 80 mm
- Load capacity: 100 staples
- Uses 24/6 staples (1 box included)
- Dimensions: 175 x 85 x 23 mm







## GALVANIZED STAPLES

<b>mod. CODE</b>	<b>24/6 1G02460</b>	<b>26/6 1G02660</b>	<b>n° 23 1G00231</b>	<b>n° 24 1G00241</b>	<b>n° 27 1G00271</b>
QUALITY	GALVANIZED	GALVANIZED	GALVANIZED	GALVANIZED	GALVANIZED
STAPLES PER BOX	1000	1000	1000	1000	1000
N° OF CASES	30	30	30	24	16
PACKAGING	288	192	360	288	160
N° OF SHEETS	30	30	30	30	100



## PENCIL SHARPENERS

Have you ever seen something that automatically produced envy? No matter the style, crank handle or vertical feeding, El Casco one-of-a-kind pencil sharpeners are to the desk accessories world what Rolls Royce is to cars.

Luxury, durability and heritage. Finished in different combinations of bright chrome, 23kt gold, and black in order to suit all tastes, styles and desks.

The perfect pairing for your most beloved graphite or colored pencils.



PENCIL SHARPENER M-430 LN  
23KT GOLD & BLACK  
CODE 1430LNC

- Crank handle pencil sharpener in black and 23k gold finish.
- Hand polished
  - Manufactured in steel and zamak
  - Black lacquered body
  - Copper, nickel and 23k gold plated
  - Sharpness regulator
  - Suction pad base
  - Dimensions: 110 x 110 x 150 mm



PENCIL SHARPENER M-430 CN  
SHINY CHROME & BLACK  
CODE 1430CNC

- Crank handle pencil sharpener in black and shiny chrome finish.
- Hand polished
  - Manufactured in steel and zamak
  - Black lacquered body
  - Copper, nickel and chrome plated
  - Sharpness regulator
  - Suction pad base
  - Dimensions: 110 x 110 x 150 mm



PENCIL SHARPENER M-430 CO  
SHINY CHROME & RED  
CODE 1430COC

- Crank handle pencil sharpener in red and shiny chrome finish.
- Hand polished
  - Manufactured in steel and zamak
  - Copper, nickel and chrome plated
  - Sharpness regulator
  - Suction pad base
  - Dimensions: 110 x 110 x 150 mm



PENCIL SHARPENER M-430 CB  
SHINY CHROME & WHITE  
CODE 1430CBC

- Crank handle pencil sharpener in white and shiny chrome finish.
- Hand polished
  - Manufactured in steel and zamak
  - Copper, nickel and chrome plated
  - Sharpness regulator
  - Suction pad base
  - Dimensions: 110 x 110 x 150 mm



PENCIL SHARPENER M-430 CZ  
SHINY CHROME & BLUE  
CODE 1430CZC

- Crank handle pencil sharpener in blue and shiny chrome finish.
- Hand polished
  - Manufactured in steel and zamak
  - Copper, nickel and chrome plated
  - Sharpness regulator
  - Suction pad base
  - Dimensions: 110 x 110 x 150 mm



PENCIL SHARPENER M-435 CT  
SHINY CHROME  
[CODE 1435CRC](#)

Vertical pencil sharpener in shiny chrome finish.  
- Hand polished  
- Manufactured in brass  
- Copper, nickel and chrome plated  
- Dimensions: 91 x 58 x 58 mm



PENCIL SHARPENER M-435 LN  
23KT GOLD & BLACK  
[CODE 1435LNC](#)

Vertical pencil sharpener in 23k gold and black finish.  
- Hand polished  
- Manufactured in brass  
- Black lacquered body  
- Copper, nickel and 23k gold plated  
- Dimensions: 91 x 58 x 58 mm



PENCIL SHARPENER M-435 L  
23KT GOLD  
[CODE 1435LAC](#)

Vertical pencil sharpener in 23k gold plated finish.  
- Hand polished  
- Manufactured in brass  
- Copper, nickel and 23k gold plated  
- Dimensions: 91 x 58 x 58 mm



PENCIL SHARPENER M-435 CO  
SHINY CHROME & RED  
[CODE 1435COC](#)

Vertical pencil sharpener in shiny chrome and red finish.  
- Hand polished  
- Manufactured in brass  
- Red lacquered body  
- Copper, nickel and 23k gold plated  
- Dimensions: 91 x 58 x 58 mm



PENCIL SHARPENER M-435 CB  
SHINY CHROME & WHITE  
[CODE 1435CBC](#)

Vertical pencil sharpener in shiny chrome and white finish.  
- Hand polished  
- Manufactured in brass  
- White lacquered body  
- Copper, nickel and 23k gold plated  
- Dimensions: 91 x 58 x 58 mm



PENCIL SHARPENER M-435 CZ  
SHINY CHROME & BLUE  
[CODE 1435CZC](#)

Vertical pencil sharpener in shiny chrome and blue finish.  
- Hand polished  
- Manufactured in brass  
- Blue lacquered body  
- Copper, nickel and 23k gold plated  
- Dimensions: 91 x 58 x 58 mm



PENCIL SHARPENER M-435 CN  
SHINY CHROME & BLACK  
[CODE 1435CNC](#)

Vertical pencil sharpener in 23k gold and black finish.

- Hand polished
- Manufactured in brass
- Black lacquered body
- Copper, nickel and 23k gold plated
- Dimensions: 91 x 58 x 58 mm





## PERFORATORS

Who said your office has to be boring? Even El Casco hole punchers, down to the very last detail, are miniature, collectable pieces of art.

As with all El Casco products, our perforators are finished in different combinations of bright chrome, 23kt gold, black and grey. Utilitarian function with luxurious touch of design to your desk.



**PERFORATOR M-200 L**

**23KT GOLD**

**CODE 1200LTC**

Office 2-hole punch in 23k gold plated finish.

- Hand polished
- Copper, nickel and 23k gold plated
- Manufactured in steel
- Dimensions: 115 x 109 x 77 mm
- Presented in a gift box
- Hole spacing: 80 mm



**PERFORATOR M-200 CT**

**SHINY CHROME**

**CODE 1200CTC**

Office 2-hole punch in shiny chrome plated finish.

- Hand polished
- Copper, nickel and chrome plated
- Manufactured in steel
- Dimensions: 115 x 109 x 77 mm
- Presented in a gift box
- Hole spacing: 80 mm



**PERFORATOR M-200 LN**

**23KT GOLD & BLACK**

**CODE 1200LNC**

Office 2-hole punch in 23k gold plated finish with black lacquered base.

- Hand polished
- Copper, nickel and 23k gold plated
- Manufactured in steel
- Dimensions: 115 x 109 x 77 mm
- Presented in a gift box
- Hole spacing: 80 mm



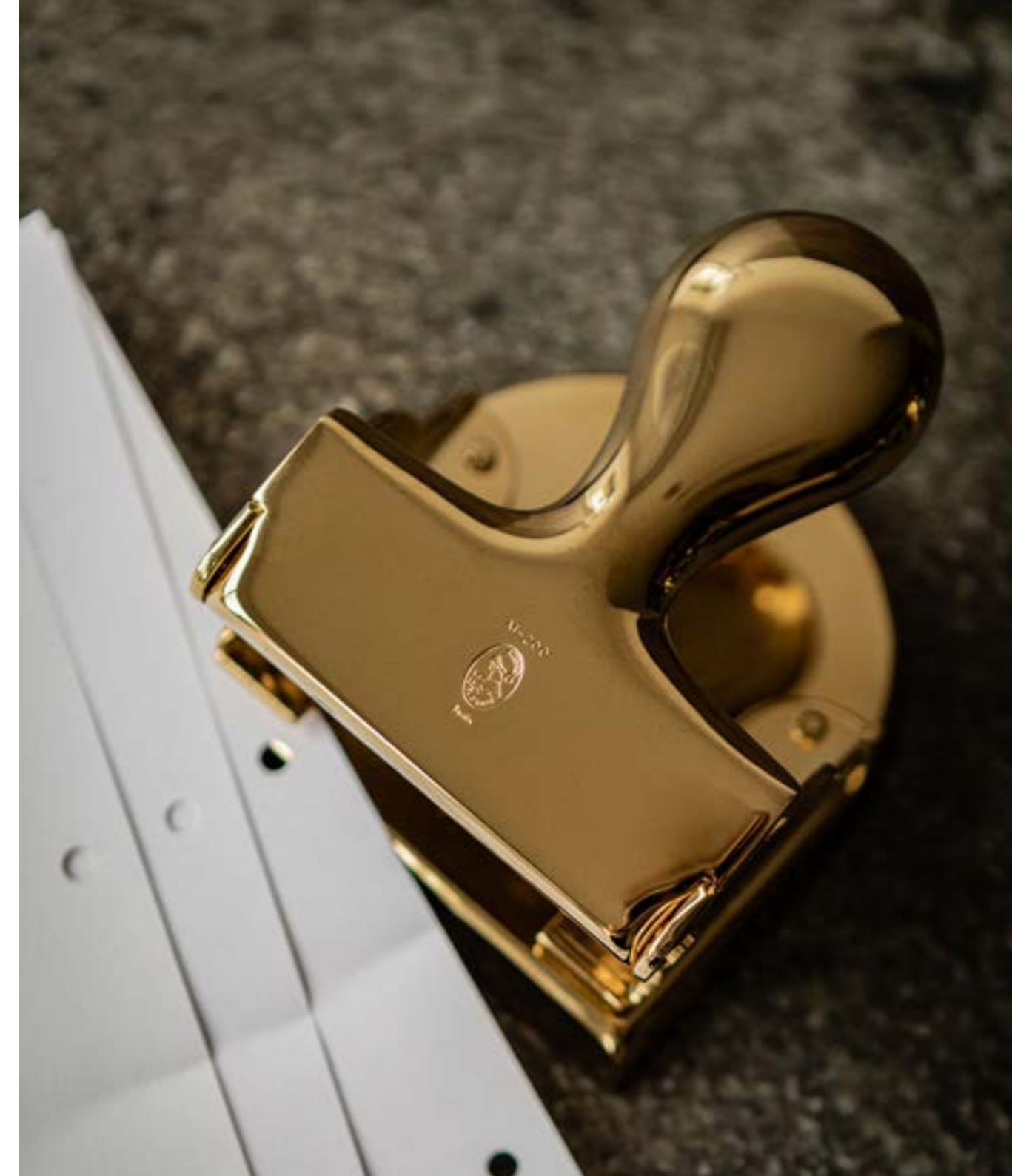
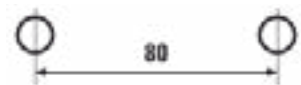
**PERFORATOR M-200 CN**

**SHINY CHROME & BLACK**

**CODE 1200CNC**

Office 2-hole punch in shiny chrome finish with black lacquered base.

- Hand polished
- Copper, nickel and chrome plated
- Manufactured in steel
- Dimensions: 115 x 109 x 77 mm
- Presented in a gift box
- Hole spacing: 80 mm





PERFORATOR M-200 CO  
SHINY CHROME & RED  
**CODE 1200COC**  
Office 2-hole punch in shiny chrome and red finish.  
- Hand polished  
- Copper, nickel and chrome plated  
- Manufactured in steel  
- Dimensions: 115 x 109 x 77 mm  
- Presented in a gift box  
- Hole spacing: 80 mm



PERFORATOR M-200 CZ  
SHINY CHROME & BLUE  
**CODE 1200CZC**  
Office 2-hole punch in shiny chrome and blue finish.  
- Hand polished  
- Copper, nickel and chrome plated  
- Manufactured in steel  
- Dimensions: 115 x 109 x 77 mm  
- Presented in a gift box  
- Hole spacing: 80 mm



PERFORATOR M-200 CB  
SHINY CHROME & WHITE  
**CODE 1200CBC**  
Office 2-hole punch in shiny chrome and white finish.  
- Hand polished  
- Copper, nickel and chrome plated  
- Manufactured in steel  
- Dimensions: 115 x 109 x 77 mm  
- Presented in a gift box  
- Hole spacing: 80 mm



PERFORATOR M-220 CG  
SHINY CHROME & GREY  
**CODE 1220CGC**  
Grey lacquered office 2-hole punch with shiny chrome plated accents.  
- Hand polished  
- Grey lacquered body  
- Copper, nickel and shiny chrome plated  
- Manufactured in steel  
- Dimensions: 110 x 110 x 75 mm  
- Presented in a gift box  
- Hole spacing: 80 mm



PERFORATOR M-220 CT  
SHINY CHROME  
**CODE 1220CTC**  
Office 2-hole punch in shiny chrome plated finish.  
- Hand polished  
- Copper, nickel and shiny chrome plated  
- Manufactured in steel  
- Dimensions: 110 x 110 x 75 mm  
- Presented in a gift box  
- Hole spacing: 80 mm





## TAPE DISPENSERS

El Casco combines vintage design, elegant finishes and classic yet modern touches to each item. Our beautiful tape dispensers are no exception. A stand alone item, or combine it with the other accessories in the same line.

Finished in different combinations of bright chrome, 23kt gold, black and grey in order to suit all tastes, styles and desks.



**TAPE DISPENSER M-800 L**

**23KT GOLD**

**CODE 1800LTC**

23k gold plated finish tape dispenser.

- Hand polished
- Copper, nickel and 23k gold plated
- Manufactured in steel
- Dimensions: 125 x 40 x 60 mm
- Presented in a gift box



**TAPE DISPENSER M-800 LN**

**23KT GOLD & BLACK**

**CODE 1800LNC**

23k gold plated finish tape dispenser with black lacquered interior and roller.

- Hand polished
- Copper, nickel and 23k gold plated
- Black lacquered accents
- Manufactured in steel
- Dimensions: 125 x 40 x 60 mm
- Presented in a gift box



**TAPE DISPENSER M-800 CT**

**SHINY CHROME**

**CODE 1800CTC**

Shiny chrome plated finish tape dispenser.

- Hand polished.
- Copper, nickel and chrome plated
- Manufactured in steel
- Dimensions: 125 x 40 x 60 mm
- Presented in a gift box



**TAPE DISPENSER M-800 CN**

**SHINY CHROME & BLACK**

**CODE 1800CNC**

Shiny chrome plated finish tape dispenser with black lacquered interior and roller.

- Hand polished
- Copper, nickel and chrome plated body
- Black lacquered accents
- Manufactured in steel
- Dimensions: 125 x 40 x 60 mm
- Presented in a gift box





## PENCIL POTS

A place for everything, and everything in its place - all while adding a touch of class and elegance to your desk. There is something unique about a company that has been in business for 100 years. Each item is made by hand, and built to last a many generations.

Finished in shiny chrome or 23kt gold coating - these eye catching pieces will be sure to stand out all while keeping your desk tidy.



PENCIL POT M-654 L  
23KT GOLD  
[CODE 1654LAC](#)  
Classic style office pencil pot in 23k gold plated finish.  
- Hand polished  
- Copper, nickel and 23k gold plated  
- Manufactured in solid brass  
- Dimensions: 95 x 95 x 117 mm  
- Internal diameter: 62 mm  
- Presented in a gift box



PENCIL POT M-654 CT  
SHINY CHROME  
[CODE 1654CRC](#)  
Classic style office pencil pot in shiny chrome plated finish.  
- Hand polished  
- Copper, nickel and shiny chrome plated  
- Manufactured in solid brass  
- Dimensions: 95 x 95 x 117 mm  
- Internal diameter: 62 mm  
- Presented in a gift box



PENCIL POT M-651 CT  
SHINY CHROME  
[CODE 1651CRC](#)  
Office pencil pot in shiny chrome plated finish.  
- Hand polished  
- Copper, nickel and shiny chrome plated  
- Manufactured in solid brass  
- Dimensions: 60 x 60 x 99 mm  
- Presented in a gift box



PENCIL POT M-651 L  
23KT GOLD  
[CODE 1651LAC](#)  
Office pencil pot in 23k gold plated finish.  
- Hand polished  
- Copper, nickel and 23k gold plated  
- Manufactured in solid brass  
- Dimensions: 60 x 60 x 99 mm  
- Presented in a gift box



PENCIL POT M-651 LN  
23KT GOLD & BLACK  
[CODE 1651LNC](#)  
Office pencil pot in black and 23k gold plated finish.  
- Hand polished  
- Black lacquered body  
- Copper, nickel and 23k gold plated  
- Manufactured in solid brass  
- Dimensions: 60 x 60 x 99 mm  
- Presented in a gift box



PENCIL POT M-651 CN  
SHINY CHROME & BLACK  
[CODE 1651CNC](#)  
Office pencil pot in black and shiny chrome plated finish.  
- Hand polished  
- Black lacquered body  
- Copper, nickel and 23k gold plated  
- Manufactured in solid brass  
- Dimensions: 60 x 60 x 99 mm  
- Presented in a gift box



PENCIL POT M-654 CO  
SHINY CHROME & RED  
CODE 1654COC

- Classic style office pencil pot in shiny chrome and red plated finish.
- Hand polished
- Copper, nickel and chrome plated
- Manufactured in solid brass
- Dimensions: 95 x 95 x 117 mm
- Internal diameter: 62 mm
- Presented in a gift box



PENCIL POT M-654 CB  
SHINY CHROME & WHITE  
CODE 1654COC

- Classic style office pencil pot in shiny chrome and white plated finish.
- Hand polished
- Copper, nickel and chrome plated
- Manufactured in solid brass
- Dimensions: 95 x 95 x 117 mm
- Internal diameter: 62 mm
- Presented in a gift box



PENCIL POT M-654 CZ  
SHINY CHROME & BLUE  
CODE 1654COC

- Classic style office pencil pot in shiny chrome and blue plated finish.
- Hand polished
- Copper, nickel and chrome plated
- Manufactured in solid brass
- Dimensions: 95 x 95 x 117 mm
- Internal diameter: 62 mm
- Presented in a gift box





## OTHER ACCESSORIES

There is something magical about receiving a desk accessory from El Casco. From the original turtle paperweights with built in bell to an array of stunning desk lamps and leather products, El Casco has you covered.

Examine each piece from every possible angle to fully appreciate the intricate, handmade quality of El Casco.



SPECTACLE HOLDER M-652 L  
23 KT GOLD

[CODE 1652LAC](#)

Spectacles holder in 23k gold plated finish.

- Hand polished
- Copper, nickel and 23k gold plated
- Manufactured in solid brass
- Padded interior
- Dimensions: 80 x 58 x 111 mm
- Presented in a gift box



SPECTACLE HOLDER M-652 CT  
SHINY CHROME

[CODE 1652CRC](#)

Spectacles holder in shiny chrome finish.

- Hand polished
- Copper, nickel and chrome plated
- Manufactured in solid brass
- Padded interior
- Dimensions: 80 x 58 x 111 mm
- Presented in a gift box



TURTLE PAPERWEIGHT M-700 L  
23KT GOLD

[CODE 1700LAC](#)

Original turtle shaped paperweight and bell, in 23k gold plated finish. A unique design by El Casco.

- Hand polished
- Copper, nickel and 23k gold plated
- Manufactured in solid brass
- Built-in bell
- Dimensions: 147 x 78 x 50 mm
- Presented in a gift box



TURTLE PAPERWEIGHT M-700 CT  
SHINY CHROME

[CODE 1700CRC](#)

Original turtle shaped paperweight and bell, in shiny chromed plated finish. A unique design by El Casco.

- Hand polished
- Copper, nickel and chrome plated
- Manufactured in solid brass
- Built-in bell
- Dimensions: 147 x 78 x 50 mm
- Presented in a gift box



LETTER OPENER M-650 L  
23KT GOLD

[CODE 1650LAC](#)

Letter opener in 23k gold finish.

- Hand polished
- Copper, nickel and 23k gold plated
- Manufactured in solid brass
- Dimensions: 220 x 30 x 5 mm
- Presented in a gift box



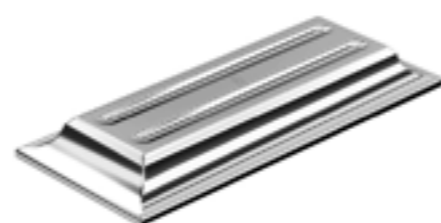
LETTER OPENER M-650 CT  
SHINY CHROME  
[CODE 1650CRC](#)

- Letter opener in shiny chrome finish.
- Hand polished
- Copper, nickel and chrome plated
- Manufactured in solid brass
- Dimensions: 220 x 30 x 5 mm
- Presented in a gift box



PEN HOLDER M-655 L  
23KT GOLD  
[CODE 1655LAC](#)

- Double pen holder in 23k gold-plated finish.
- Hand polished
- Copper, nickel and 23k gold-plated
- Manufactured in solid brass
- Dimensions: 219 x 95 x 30 mm
- Presented in a gift box



PEN HOLDER M-655 CT  
SHINY CHROME  
[CODE 1655CRC](#)

- Double pen holder in shiny chrome finish.
- Hand polished
- Copper, nickel and chrome plated
- Manufactured in solid brass
- Dimensions: 219 x 95 x 30 mm
- Presented in a gift box



CIGAR ASHTRAY M-760 L  
23KT GOLD  
[CODE 1760LAC](#)

- Cigar Ashtray in 23k gold plated finish.
- Hand polished
- Copper, nickel and 23k gold plated
- Manufactured in crystal and solid brass
- Dimensions: 190 x 158 x 60 mm
- Presented in a gift box



CIGAR ASHTRAY M-760 CT  
SHINY CHROME  
[CODE 1760CRC](#)

- Cigar Ashtray in shiny chrome finish.
- Hand polished
- Copper, nickel and chrome plated
- Manufactured in crystal and solid brass
- Dimensions: 190 x 158 x 60 mm
- Presented in a gift box







**CIGAR CUTTER M-765 LN**  
**23KT GOLD & BLACK**  
**CODE 1765LNC**  
Plier cigar cutter in 23k gold plated and black lacquered finish.  
- Hand polished  
- Copper, nickel and 23k gold plated  
- Manufactured in steel  
- Solingen stainless steel blade  
- Dimensions: 155 x 83 x 35 mm  
- Presented in a gift box



**CIGAR CUTTER M-765 L**  
**23KT GOLD**  
**CODE 1765LAC**  
Plier cigar cutter in 23k gold finish.  
- Hand polished  
- Copper, nickel and 23k gold plated  
- Manufactured in steel  
- Solingen stainless steel blade  
- Dimensions: 155 x 83 x 35 mm  
- Presented in a gift box



**CIGAR CUTTER M-765 CN**  
**SHINY CHROME & BLACK**  
**CODE 1765CNC**  
Plier cigar cutter in shiny chrome and black finish.  
- Hand polished  
- Copper, nickel and chrome plated  
- Manufactured in steel  
- Solingen stainless steel blade  
- Dimensions: 155 x 83 x 35 mm  
- Presented in a gift box



**CIGAR CUTTER M-765 CT**  
**SHINY CHROME**  
**CODE 1765CTC**  
Plier cigar cutter in shiny chrome finish.  
- Hand polished  
- Copper, nickel and chrome plated  
- Manufactured in steel  
- Solingen stainless steel blade  
- Dimensions: 155 x 83 x 35 mm  
- Presented in a gift box



INK BLOTTER M-750 L  
23KT GOLD  
[CODE 1750LAC](#)

- Ink blotter in 23k gold plated finish.
- Hand polished
- Copper, nickel and 23k gold plated
- Manufactured in steel and solid brass
- Dimensions: 122 x 72 x 75 mm
- Presented in a gift box



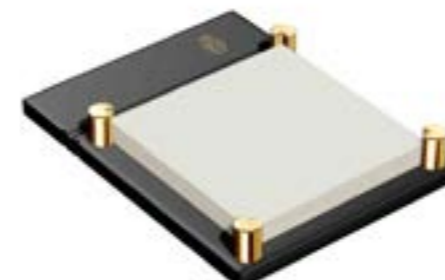
INK BLOTTER M-750 CT  
SHINY CHROME  
[CODE 1750CTC](#)

- Ink blotter in shiny chrome plated finish.
- Hand polished
- Copper, nickel and shiny chrome plated
- Manufactured in steel and solid brass
- Dimensions: 122 x 72 x 75 mm
- Presented in a gift box



NOTE HOLDER M-671 L  
23KT GOLD  
[CODE 1671LAC](#)

- Note holder in 23k gold plated finish.
- Hand polished
- Copper, nickel and 23k gold plated
- Manufactured in solid brass
- Dimensions: 126 x 96 x 19 mm
- Presented in a gift box



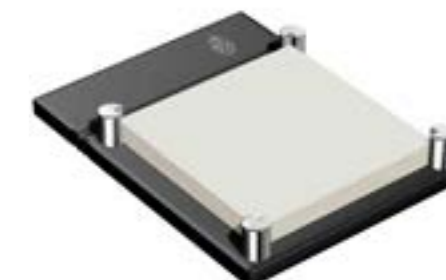
NOTE HOLDER M-671 LN  
23KT GOLD & BLACK  
[CODE 1671LNC](#)

- Black sticky note holder with 23k gold plated accents.
- Hand polished
- Black lacquered body
- Copper, nickel and 23k gold plated
- Manufactured in solid brass
- Dimensions: 126 x 96 x 19 mm
- Presented in a gift box



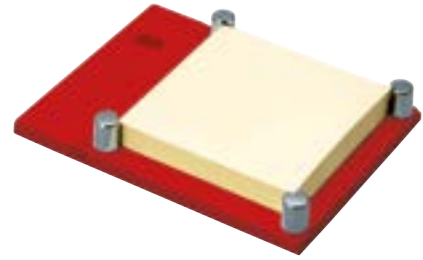
NOTE HOLDER M-671 CT  
SHINY CHROME  
[CODE 1671CRC](#)

- Note holder in shiny chrome plated finish.
- Hand polished
- Copper, nickel and shiny chrome plated
- Manufactured in solid brass
- Dimensions: 126 x 96 x 19 mm
- Presented in a gift box



NOTE HOLDER M-671 CN  
SHINY CHROME & BLACK  
[CODE 1671CNC](#)

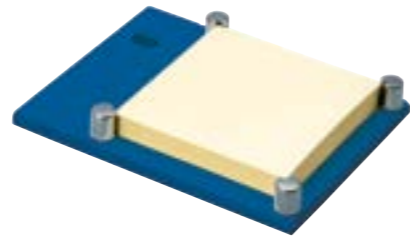
- Black sticky note holder with shiny chrome plated accents.
- Hand polished
- Black lacquered body
- Copper, nickel and shiny chrome plated
- Manufactured in solid brass
- Dimensions: 126 x 96 x 19 mm
- Presented in a gift box



NOTE HOLDER M-671 CO  
SHINY CHROME & RED  
[CODE 1671COC](#)  
Sticky note holder with shiny chrome and red plated accents.  
- Hand polished  
- Red lacquered body  
- Copper, nickel and shiny chrome plated  
- Manufactured in solid brass  
- Dimensions: 126 x 96 x 19 mm  
- Presented in a gift box



NOTE HOLDER M-671 CB  
SHINY CHROME & WHITE  
[CODE 1671CBC](#)  
Sticky note holder with shiny chrome and white plated accents.  
- Hand polished  
- White lacquered body  
- Copper, nickel and shiny chrome plated  
- Manufactured in solid brass  
- Dimensions: 126 x 96 x 19 mm  
- Presented in a gift box



NOTE HOLDER M-671 CZ  
SHINY CHROME & BLUE  
[CODE 1671CZC](#)  
Sticky note holder with shiny chrome and blue plated accents.  
- Hand polished  
- Blue lacquered body  
- Copper, nickel and shiny chrome plated  
- Manufactured in solid brass  
- Dimensions: 126 x 96 x 19 mm  
- Presented in a gift box



MAGNIFIER M-675 L  
23KT GOLD  
[CODE 1675LAC](#)  
Classic magnifier in 23k gold plated finish.  
- Hand polished  
- Copper, nickel and 23k gold plated  
- Manufactured in solid brass  
- Magnification: 3X  
- Dimensions: 152 x 64 x 10 mm  
- Presented in a gift box



MAGNIFIER M-675 CT  
SHINY CHROME  
[CODE 1675CRC](#)  
Classic magnifier in shiny chrome plated finish.  
- Hand polished  
- Copper, nickel and shiny chrome plated  
- Manufactured in solid brass  
- Magnification: 3X  
- Dimensions: 152 x 64 x 10 mm  
- Presented in a gift box





MAGNETIC CLIPS POT M-657 L  
23KT GOLD  
CODE 1657LAC

- Magnetic Paperclip Holder in 23k gold plated finish.
- Hand polished
  - Copper, nickel and 23k gold plated
  - Manufactured in solid brass
  - Built-in magnet
  - Dimensions: 61 x 61 x 57 mm
  - Presented in a gift box



MAGNETIC CLIPS POT M-657 CT  
SHINY CHROME  
CODE 1657CRC

- Magnetic Paperclip Holder in shiny chrome plated finish.
- Hand polished
  - Copper, nickel and chrome plated
  - Manufactured in solid brass
  - Built-in magnet
  - Dimensions: 61 x 61 x 57 mm
  - Presented in a gift box



MAGNETIC CLIPS POT M-657 CN  
SHINY CHROME & BLACK  
CODE 1657CNC

- Magnetic Paperclip Holder in shiny chrome and black plated finish.
- Hand polished
  - Black lacquered body
  - Copper, nickel and chrome plated
  - Manufactured in solid brass
  - Built-in magnet
  - Dimensions: 61 x 61 x 57 mm
  - Presented in a gift box



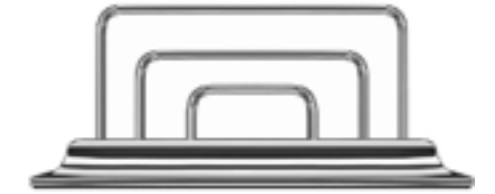
MAGNETIC CLIPS POT M-657 LN  
23KT GOLD & BLACK  
CODE 1657LNC

- Magnetic Paperclip Holder in 23k gold and black plated finish.
- Hand polished
  - Copper, nickel and 23k gold plated
  - Black lacquered body
  - Manufactured in solid brass
  - Built-in magnet
  - Dimensions: 61 x 61 x 57 mm
  - Presented in a gift box



ENVELOPE HOLDER M-675 L  
23KT GOLD  
CODE 1672LAC

- Letter rack in 23k gold plated finish.
- Hand polished
  - Copper, nickel and 23k gold plated
  - Manufactured in solid brass
  - Dimensions: 219 x 95 x 110 mm
  - Presented in a gift box



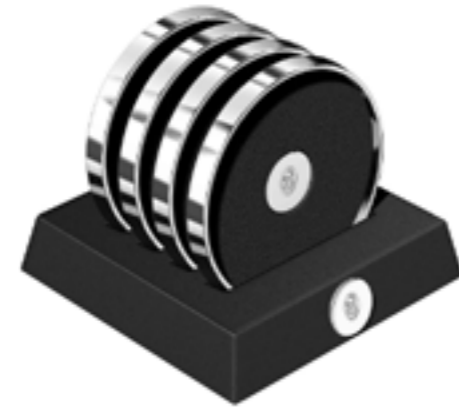
ENVELOPE HOLDER M-675 CT  
SHINY CHROME  
CODE 1672CRC

- Letter rack in shiny chrome plated finish.
- Hand polished
  - Copper, nickel and chrome plated
  - Manufactured in solid brass
  - Dimensions: 219 x 95 x 110 mm
  - Presented in a gift box



**DRINK COASTERS SET M-653 L**  
**23KT GOLD**  
**CODE 1653LAC**

- Drink coasters (4 piece set) in brown leather and 23k gold plated finish.
- Hand polished
  - Black lacquered stand
  - Copper, nickel and 23k gold plated
  - Solid brass and leather
  - Dimensions: 126 x 126 x 106 mm
  - Coaster diameter: 84 mm
  - Presented in a gift box



**DRINK COASTERS SET M-653 CT**  
**SHINY CHROME**  
**CODE 1653CRC**

- Drink coasters (4 piece set) in black leather and shiny chrome plated finish.
- Hand polished
  - Black lacquered stand
  - Copper, nickel and 23k gold plated
  - Solid brass and leather
  - Dimensions: 126 x 126 x 106 mm
  - Coaster diameter: 84 mm
  - Presented in a gift box



**CARD HOLDER M-670 L**  
**23KT GOLD**  
**CODE 1670LAC**

- Desk card holder in 23k gold plated finish.
- Hand polished
  - Copper, nickel and 23k gold plated
  - Manufactured in solid brass
  - Dimensions: 89 x 60 x 30 mm
  - Presented in a gift box



**CARD HOLDER M-670 CT**  
**SHINY CHROME**  
**CODE 1670CRC**

- Desk card holder in shiny chrome plated finish.
- Hand polished
  - Copper, nickel and chrome plated
  - Manufactured in solid brass
  - Dimensions: 89 x 60 x 30 mm
  - Presented in a gift box



**CARD HOLDER M-670 LN**  
**23KT GOLD & BLACK**  
**CODE 1670LNC**

- Desk card holder in black with 23k gold plated accents.
- Hand polished
  - Black lacquered body
  - Copper, nickel and 23k gold plated
  - Manufactured in solid brass
  - Dimensions: 89 x 60 x 30 mm
  - Presented in a gift box



CARD HOLDER M-670 CN  
SHINY CHROME & BLACK  
CODE 1670CNC

- Desk card holder in black with shiny chrome accents.
- Hand polished.
- Black lacquered body
- Copper, nickel and chrome plated
- Manufactured in solid brass
- Dimensions: 89 x 60 x 30 mm
- Presented in a gift box



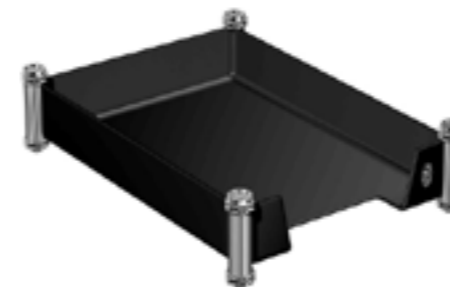
LETTER TRAY M-673 LN  
23KT GOLD & BLACK  
CODE 1673LNB

- Letter tray. Manufactured in steel and black painted. 23 kt gold details.
- Sizes: 367-267-74 mm
- Presented in an elegant gift box



LETTER TRAY COVER M-674 LN  
23KT GOLD & BLACK  
CODE 1674LNB

- Cover for letter tray . Manufactured in steel , black painted and 23kt gold plated details.
- Sizes: 352 x 274 x 50 mm
- Presented in an elegant gift box



LETTER TRAY M-673 CN  
SHINY CHROME & BLACK  
CODE 1673CNB

- Letter tray. Manufactured in steel and black painted. Shiny chrome details.
- Sizes: 367-267-74 mm
- Presented in an elegant gift box



LETTER TRAY COVER M-674 CN  
SHINY CHROME & BLACK  
CODE 1674CNB

- Cover for letter tray . Manufactured in steel , black painted and shiny chrome-plated details.
- Sizes: 352 x 274 x 50 mm
- Presented in an elegant gift box





LED LAMP M-666 CT  
SHINY CHROME  
[CODE 1666CRB](#)  
Elegant led desk lamp in chrome plated.  
- Hand polished  
- Copper, nickel and 23k chrome plated  
- Manufactured in solid brass  
- Dimensions: 425 x 159 x 530 mm  
- Presented in a gift box



LED LAMP M-666 L  
23KT GOLD  
[CODE 1666LAB](#)  
Elegant led desk lamp in 23k gold plated finish.  
- Hand polished  
- Copper, nickel and 23k gold plated  
- Manufactured in solid brass  
- Dimensions: 425 x 159 x 530 mm  
- Presented in a gift box



6 INCH SCISSORS M-770 L  
23KT GOLD  
[CODE 1770LAC](#)  
6 inch scissors in 23k gold plated finish.  
- Hand polished  
- Copper, nickel and 23k gold plated  
- Manufactured in steel  
- Dimensions: 156 x 51 x 7 mm  
- Presented in a gift box



6 INCH SCISSORS M-770 CT  
SHINY CHROME  
[CODE 1770CRC](#)  
6 inch scissors in shiny chrome plated finish.  
- Hand polished  
- Copper, nickel and chrome plated  
- Manufactured in steel  
- Dimensions: 156 x 51 x 7 mm  
- Presented in a gift box



7 INCH SCISSORS M-771 L  
23KT GOLD  
[CODE 1771LAC](#)  
7 inch scissors in 23k gold plated finish.  
- Hand polished  
- Copper, nickel and 23k gold plated  
- Manufactured in steel  
- Dimensions: 156 x 51 x 7 mm  
- Presented in a gift box



7 INCH SCISSORS M-771 CT  
SHINY CHROME  
[CODE 1771CRC](#)  
7 inch scissors in shiny chrome plated finish.  
- Hand polished  
- Copper, nickel and chrome plated  
- Manufactured in steel  
- Dimensions: 156 x 51 x 7 mm  
- Presented in a gift box



9 INCH SCISSORS M-772 L  
23KT GOLD  
[CODE 1772LAC](#)  
9 inch scissors in 23k gold plated finish.  
- Hand polished  
- Copper, nickel and 23k gold plated  
- Manufactured in steel  
- Dimensions: 156 x 51 x 7 mm  
- Presented in a gift box



9 INCH SCISSORS M-772 CT  
SHINY CHROME  
[CODE 1772CRC](#)  
9 inch scissors in shiny chrome plated finish.  
- Hand polished  
- Copper, nickel and chrome plated  
- Manufactured in steel  
- Dimensions: 156 x 51 x 7 mm  
- Presented in a gift box







DESK CLOCK M-663 CT  
SHINY CHROME  
[CODE 1663CRC](#)

- Desk clock in shiny chrome plated finish.
- Hand polished
- Copper, nickel and shiny chrome plated
- Manufactured in solid brass
- Dimensions: 250 x 76 x 190 mm
- Presented in a gift box



DESK CLOCK M-663 L  
23KT GOLD  
[CODE 1663LAC](#)

- Desk clock in 23k gold plated finish.
- Hand polished
- Copper, nickel and 23k gold plated
- Manufactured in solid brass
- Dimensions: 250 x 76 x 190 mm
- Presented in a gift box



CLOCK & PEN HOLDER M-662 CT  
SHINY CHROME  
[CODE 1662CRC](#)

- Desk clock and pen holder in shiny chrome plated finish.
- Hand polished
- Copper, nickel and shiny chrome plated
- Manufactured in solid brass
- Dimensions: 219 x 95 x 130 mm
- Presented in a gift box



CLOCK & PEN HOLDER M-662 L  
23KT GOLD  
[CODE 1662LAC](#)  
Desk clock and pen holder in 23kt gold plated finish.  
- Hand polished  
- Copper, nickel and 23kt gold plated  
- Manufactured in solid brass  
- Dimensions: 219 x 95 x 130 mm  
- Presented in a gift box



DESK LAMP M-665 CT  
SHINY CHROME  
[CODE 1665CRB](#)  
Sophisticated desk lamp in shiny chrome finish with black lampshade.  
- Hand polished  
- Copper, nickel and chrome plated  
- Manufactured in solid brass  
- Adjustable lampshade  
- Two maximum 60 watt bulbs  
- Dimensions: 352 x 235 x 330 mm  
- Presented in a gift box



DESK LAMP M-665 L  
23KT GOLD  
[CODE 1665LAB](#)  
Sophisticated desk lamp in 23k gold plated finish with black lampshade.  
- Hand polished  
- Copper, nickel and 23k gold plated  
- Manufactured in solid brass  
- Adjustable lampshade  
- Two maximum 60 watt bulbs  
- Dimensions: 352 x 235 x 330 mm  
- Presented in a gift box



PENCIL POT M-681  
VEGETABLE LEATHER  
[CODE 380-681](#)  
Vegetable leather pencil pot.  
- Dimensions: 112 x 85 x 85 mm





NOTE HOLDER M-682  
VEGETABLE LEATHER  
[CODE 380-682](#)  
Vegetable leather note holder.  
- Dimensions: 170 x 235 x 40 mm



TELEPHONE INDEX M-683  
VEGETABLE LEATHER  
[CODE 380-683](#)  
Vegetable leather telephone index.  
- Dimensions: 242 x 186 x 38 mm



ENVELOPE HOLDER M-684  
VEGETABLE LEATHER  
[CODE 380-684](#)  
Vegetable leather envelope holder.  
- Dimensions: 278 x 142 x 63 mm



EMPTY POCKET TRAY M-686  
VEGETABLE LEATHER  
[CODE 380-686](#)  
Vegetable leather pocket tray.  
- Dimensions: 340 x 182 x 43 mm



LETTER TRAY M-687  
VEGETABLE LEATHER  
[CODE 380-687](#)  
Vegetable leather letter tray.  
- Dimensions: 362x 252 x 73 mm



DESK MAT M-688  
VEGETABLE LEATHER  
[CODE 380-688](#)  
Vegetable leather desk mat.  
- Dimensions: 515x 395 x 35 mm



PENCIL POT M-711  
BLACK LEATHER  
[CODE 3711CRC](#)  
Black leather pencil pot.  
- Dimensions: 98x 98 x 108 mm



NOTE HOLDER M-712  
BLACK LEATHER  
[CODE 3712CRC](#)  
Black leather note holder.  
- Dimensions: 133x 133 x 68 mm



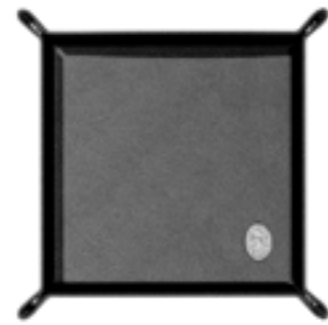
TELEPHONE INDEX M-713  
BLACK LEATHER  
[CODE 3713CRC](#)  
Black leather telephone index.  
- Dimensions: 243x 185 x 22 mm



ENVELOPE HOLDER M-714  
BLACK LEATHER  
[CODE 3714CRC](#)  
Black leather envelope holder.  
- Dimensions: 252x 86x 127 mm



CALENDAR BLOCK HOLDER M-715  
BLACK LEATHER  
[CODE 3715CRC](#)  
Black leather calendar block holder.  
- Dimensions: 225x 165x 77 mm



POCKET TRAY M-716  
BLACK LEATHER  
[CODE 3716CRC](#)  
Black leather pocket tray.  
- Dimensions: 182x 182x 42 mm



POCKET TRAY M-717  
BLACK LEATHER  
[CODE 3717CRC](#)  
Black leather pocket tray.  
- Dimensions: 337x 182x 47 mm



DESK MAT M-719  
BLACK LEATHER  
[CODE 3719CRC](#)  
Black leather pocket tray.  
- Dimensions: 540x 410x 27 mm





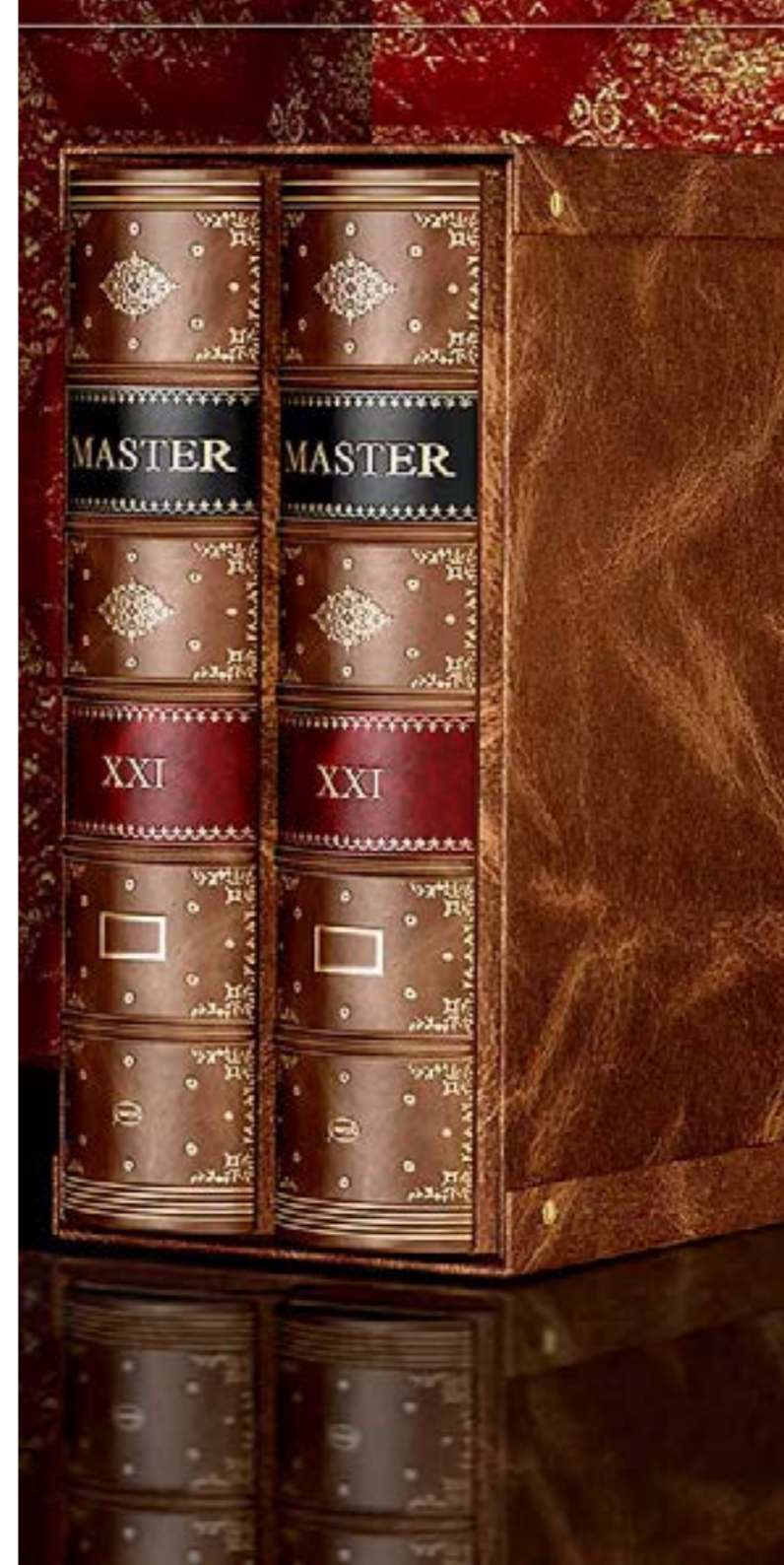
CARD HOLDER M-720  
BLACK LEATHER  
[CODE 3720CRC](#)  
Black leather business card holder.  
- Dimensions: 290x 143x 26 mm



MOUSE PAD M-721  
BLACK LEATHER  
[CODE 3721CRC](#)  
Black leather mouse pad.  
- Dimensions: 277x 247x 22 mm



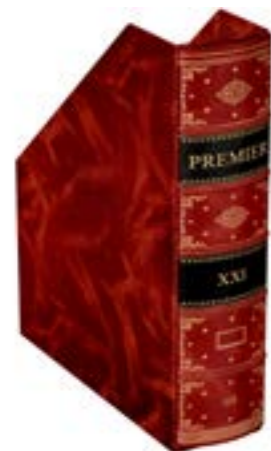
LETTER TRAY M-718  
BLACK LEATHER  
[CODE 3718CRC](#)  
Black leather letter tray.  
- Dimensions: 338x 242x 65 mm



CLASSIC LEVER FILES M-810  
PREMIER RED  
[CODE 3PA-810](#)  
Deluxe lever arch file Premier Series with  
handmade coloured spine in red.



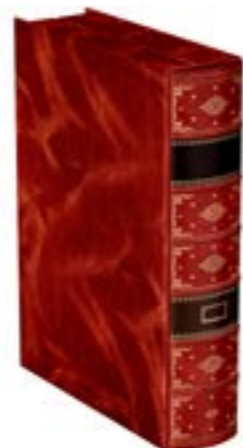
CLASSIC LEVER FILES M-811  
PREMIER BROWN  
[CODE 3PA-811](#)  
Deluxe lever arch file Premier Series with  
handmade coloured spine in brown.



MAGAZINE HOLDER M-812  
PREMIER RED  
[CODE 3PA-812](#)  
Deluxe magazine holder file Premier Series with handmade coloured spine in red.



MAGAZINE HOLDER M-813  
PREMIER BROWN  
[CODE 3PA-813](#)  
Deluxe magazine holder file Premier Series with handmade coloured spine in brown.



BOOK BOX M-814  
PREMIER RED  
[CODE 3PA-814](#)  
Deluxe book box with handmade coloured spine in red.



BOOK BOX M-815  
PREMIER BROWN  
[CODE 3PA-815](#)  
Deluxe book box with handmade coloured spine in brown.



ALBUM M-816  
PREMIER BROWN  
[CODE 3PA-816](#)  
Deluxe album with box with handmade coloured spine in brown.



MASTER M-817  
PREMIER BROWN  
[CODE 3PA-817](#)  
Deluxe set of two lever arch files Master Series with box with handmade coloured spine in brown.



CORK SCREW M-755 CT  
WALL MOUNTED  
[CODE 3755CRC](#)  
Wall mounted cork screw with shiny  
chrome plated details.  
-Dimensions 590 x 100 x 100 mm







## TUNCALYA S.L.

Poligono Industrial Pagatza  
20690 ELGETA (Guipúzcoa) Spain  
Phone: +34 943 78 82 78  
Fax: +34 943 76 81 89  
Email: [el-casco@el-casco.es](mailto:el-casco@el-casco.es)  
[www.el-casco.es](http://www.el-casco.es)



*El Casco*  
TUNCALYA, S.L.