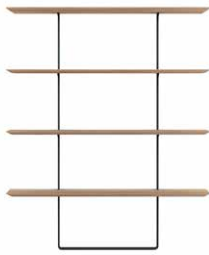


indoor

# Team Wall shelf / estantería pared

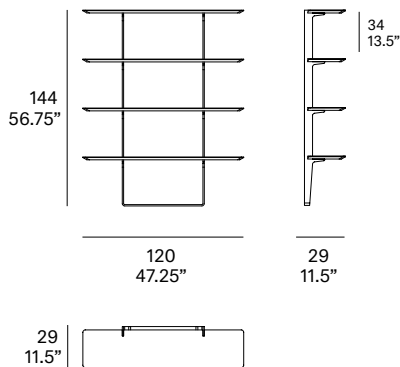
Mario Ruiz, 2015/2021

T855 120



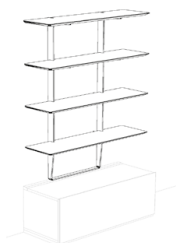
Furniture system made of solid wood from European oaks and metallic frame. Shelf width: 47.25". The collection is also available in a lacquered version (MDF).

Sistema de mobiliario fabricado en madera maciza de roble europeo y estructura metálica. Ancho de estantería: 120 cm. La colección también está disponible en versión lacada (MDF).



## Shipment details

Qty	1 shelf (3 boxes)
Volume	0,49 m <sup>3</sup> / 17.5 ft <sup>3</sup>
Gross weight	45 kg / 99 lb
Net weight	40 kg / 88 lb
Item dimensions (width x depth x height)	120 x 29 x 144 cm 47.25" x 11.5" x 56.75"



**expormim**

Expormim S.A.  
Pol. Ind. Jaime I  
46640 Moixent (Valencia) Spain  
+34 962 295 144/5  
export@expormim.com  
www.expormim.com

Expormim USA LLC  
(212) 204-8572  
usa@expormim.com  
www.expormim.com

1/3

**Shelves**

**solid wood**



W01 natural oak



W03 light oak

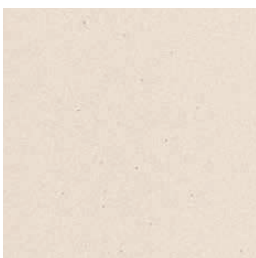


W02 white stained

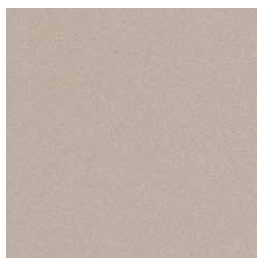


W05 dark stained

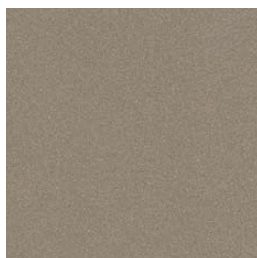
**textured lacquers**



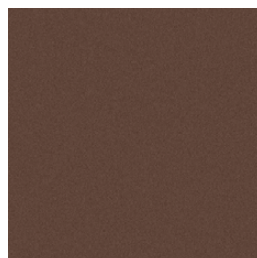
LT24 linen



LT09 champagne



LT10 bronze

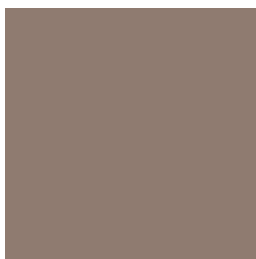


LT26 sable brown



LT11 graphite

**lacquers**



L5 taupe

indoor

**Metallic structure**

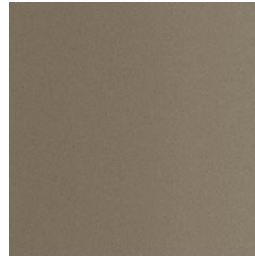
**metallic finishes- fine textured**



124 FT linen



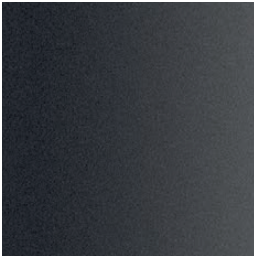
102 FT light grey



110 FT bronze



108 FT oxide



111 FT graphite