

Giro  
Club armchair,  
by Vincent Van Duysen

**kettal**

# Club armchair

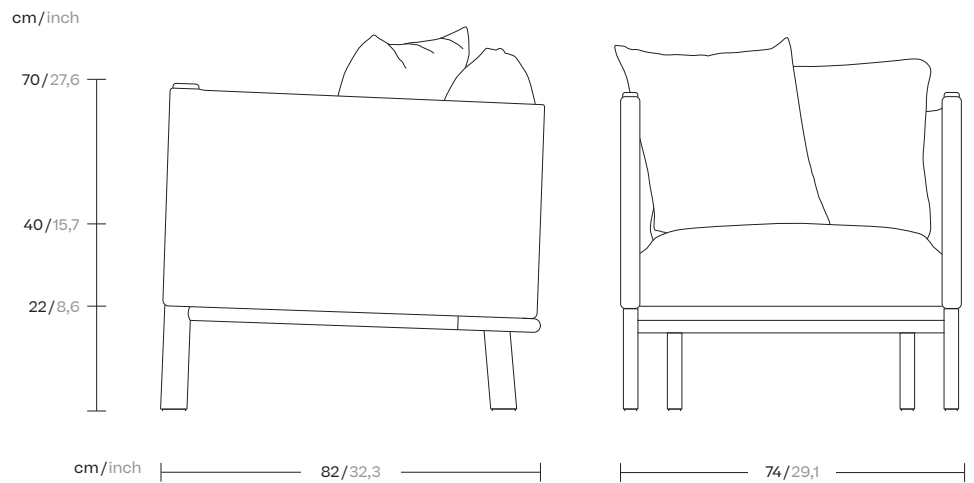
Designer  
Vincent Van Duysen

Collection  
Giro

Reference  
KS7400300

1/4

Giro is a collection which can blend into interiors and exteriors due to its tactility and pure lines. In Giro, we have some variety of shapes, textures and materials (see the difference between the seating items and the coffee and side tables). And still all the items merge harmoniously together to create a warm, tactile and pleasant atmosphere.



kettal

# Club armchair

Designer  
Vincent Van Duysen

Collection  
Giro

Reference  
KS7400300

2/4

## Materials

Teak  
Teak A-Grade, Eco Friendly  
Oeko-Tek

Stipa Fabric  
Antioxy, Resist UV, En-581-4, Easy  
Clean

Terrain Elements  
100% Fire Retardant Dyed  
Acrylic, IMO FTP Code 2010  
Part 8, Abrasion resistance  
(Martindale) 60.000 cycles,  
Fluorocarbon-free water  
repellent finish Mildew, chlorine  
and seawater resistant

Tonale Lino  
100% Solution Dyed Acrylic, Fire  
retardant IMO FTP Code 2010  
Part 8

Tonale Boucle  
60% Solution Dyed Acrylic 40%  
polyester Fire retardant IMO FTP  
Code 2010 Part 8

## Fabric Colour Options

## Soga A



New Dawn  
455



Chestnut  
475

## Fabric Colour Options

## Soga B



Woodland  
485



Ivy  
465

## Seat/Back Cushion

## Tonale Lino



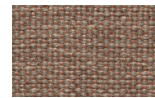
White Chia  
61L-61T



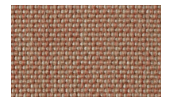
Fennel  
62L-62T



Elwendia  
63L-63T



Brown Mustard  
64L-64T



Kampot  
65L-65T



Fenugreek  
66L-66T

## Seat/Back Cushion

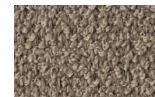
## Tonale Boucle



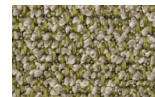
White Poppy  
81L-81T



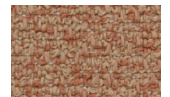
Sesame  
82L-82T



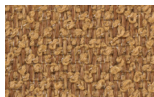
Anise  
83L-83T



Dill  
84L-84T



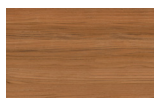
Allspice Jamaica  
85L-85T



Birds Foot  
86L-86T

## Frame Colour Options

## Teak



Teak

# Club armchair

Designer  
Vincent Van Duysen

Collection  
Giro

Reference  
KS7400300

3/4

## Maintenance

Clean with mild soap using sponge or cloth. Be gentle while cleaning, do not scrub aggressively the fabric. Once cleaned please make sure you remove soap excess.

In case of aggressive stains clean with diluted household bleach.

Clean stains promptly. The longer it remains, more difficult will be to remove.

Once cleaned the fabric steam iron the fabric. Just use steam, be carefull NOT placing the iron directly in the fabric it will get damage.

## Seat/Back Cushion

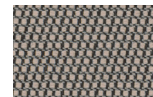
## Terrain Laminate Elements



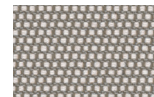
Charcoal  
01L



Cumulus  
02L



Fog  
09L



Porous Grey  
08L



Snowcap  
03L



Moonstone  
07L



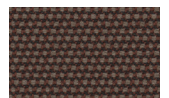
Karakum  
06L



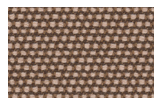
Cambium  
12L



Raku  
11L



Clove  
13L



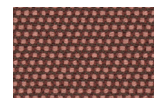
Desert Rose  
14L



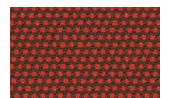
Pink Salt  
15L



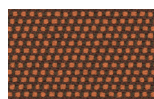
Pacific Dawn  
16L



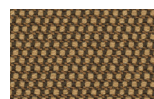
Acer  
17L



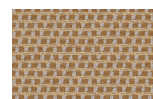
Firetail  
18L



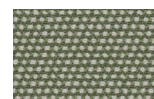
Glowing Ember  
19L



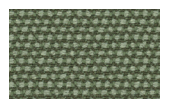
Tiger Eye  
05L



Goldrush  
04L



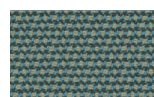
Sea Heart  
22L



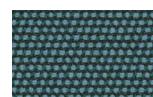
Heath  
21L



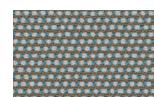
Peppercorn  
20L



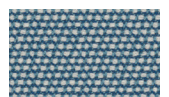
Rock Pool  
23L



Tropic  
24L



Skylark  
25L



Nautica  
26L



Blue Reef  
27L



Cosmos  
28L



Amethyst  
29L

# Club armchair

Designer  
Vincent Van Duysen

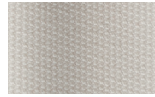
Collection  
Giro

Reference  
KS7400300

4/4

## Fabric Options

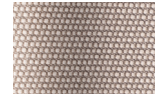
## Terrain Fabrics No Laminate



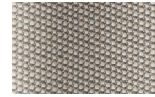
White Cliffs  
258



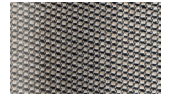
Dry Sand  
251



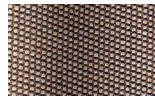
Porous Grey  
259



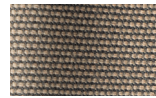
Limestone  
260



Fog  
257



Deer  
252



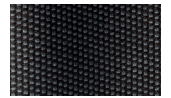
Wet Sand  
254



Cobblestone  
255



Cyprus Umber  
253



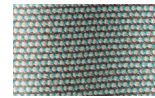
Loam  
256



Charcoal  
261



Arctic  
274



Fjord  
283



Cerulean  
280



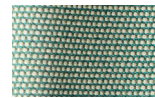
Caribbean  
273



Atlantic  
272



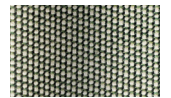
Rainforest  
275



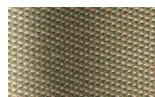
Lagoon  
276



Cedar  
279



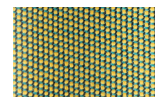
Moss  
277



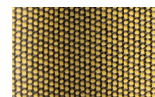
Olive  
278



Autumn  
281



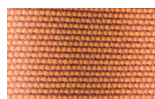
Summer Sky  
284



Golden Sand  
262



Flamma  
263



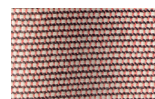
Sunrise  
264



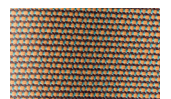
Saffron  
265



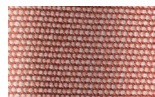
Burnt Sienna  
266



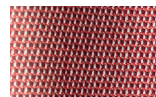
Ash Rose  
267



Cooper  
282



Dusk Pink  
268



Flamingo  
271



Coral  
270



Sandstone  
269