

outdoor

Plump

Left side module / módulo lateral izq.

Studio expormim 2014

C870

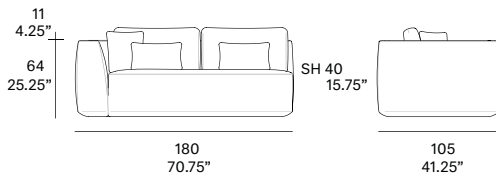


Module made of high resistance aluminum tube and upholstered with foam of different densities. Possibility of customization through a wide variety of technical fabrics completely suitable for outdoor use. Upholstery*.

1 loose cushion 17.75" x 17.75" + 2 loose cushions 19.75" x 12.5" included.

Módulo fabricado en estructura de aluminio de alta resistencia y tapizado con espuma de diferentes densidades. Posibilidad de personalización mediante una amplia variedad de tejidos técnicos totalmente aptos para exteriores. Tapizado fijo*.

1 cojín decorativo de 45x45 cm + 2 cojines decorativos de 50x32 cm incluidos.



Shipment details

Qty	1 module (1 box)
Volume	1,38 m3 / 49 ft3
Gross weight	51 kg / 112 lb
Net weight	43 kg / 95 lb
Item dimensions (width x depth x height)	180 x 105 x 64 cm 70.75" x 41.25" x 25.25"
COM (1, 40 - 1,50 m / 54"-59")	upholstered: 11 m / 12 yd loose cushions: 1,5 m / 1.7 yd

Certifications

UNE EN 581-1:2017
UNE EN 581-2:2016
UNE EN 1022:2005

* With the aim of extending the service life of the products, Expormim highly recommends the use of protective covers during the periods when the furniture is not being used and exposed to the elements.

* Con la intención de alargar la vida útil del producto, Expormim aconseja el uso de fundas protectoras durante los periodos donde el mueble no vaya a ser utilizado de forma continua, quedando expuesto a la intemperie.

expormim

Expormim S.A.
Pol. Ind. Jaime I
46640 Moixent (Valencia) Spain
+34 962 295 144/5
export@expormim.com
www.expormim.com

Expormim USA LLC
(212) 204-8572
usa@expormim.com
www.expormim.com

1/4

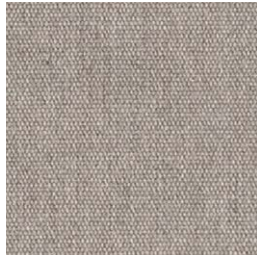
outdoor

upholstered / tapizado

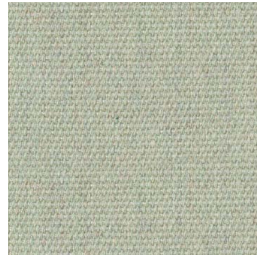
group 12 - heritage Sunbrella®



heritage papyrus



heritage ash



heritage moss



heritage leaf

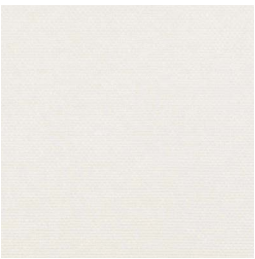


heritage pumpkin

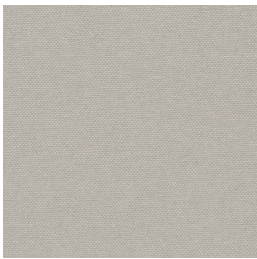


heritage garnet

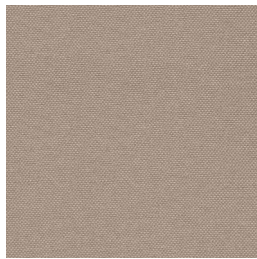
group 12 - silvertex™



silvertex ice



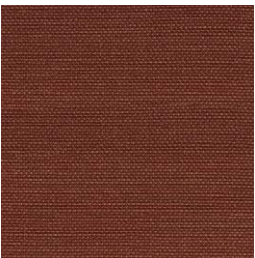
silvertex macadamia



silvertex sandstone



silvertex taupe



silvertex umber



silvertex teal



silvertex citrus

expormim

Expormim S.A.
Pol. Ind. Jaime I
46640 Moixent (Valencia) Spain
+34 962 295 144/5
export@expormim.com
www.expormim.com

Expormim USA LLC
(212) 204-8572
usa@expormim.com
www.expormim.com

2/4

outdoor

upholstered / tapizado

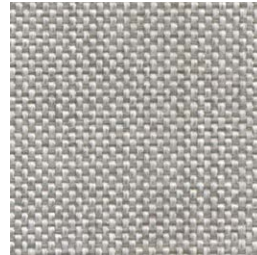
group 12 - dolce Crevin®



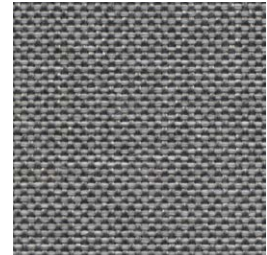
dolce 07



dolce 16



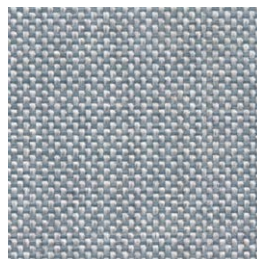
dolce 80



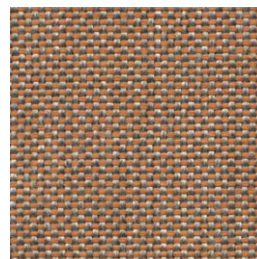
dolce 51



dolce 53



dolce 43



dolce 24

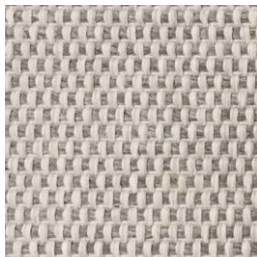


dolce 30

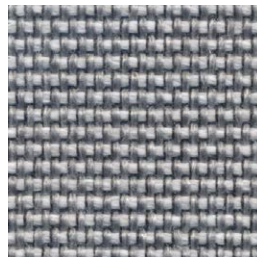
group 12 - strada Crevin®



strada 07



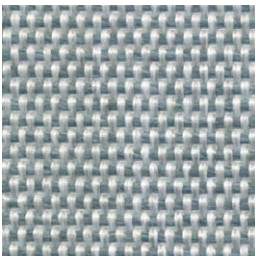
strada 75



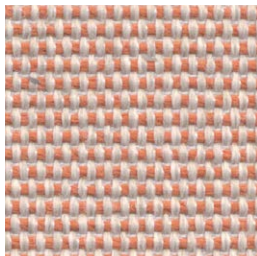
strada 51



strada 83



strada 43



strada 29



strada 32

expormim

Expormim S.A.
Pol. Ind. Jaime I
46640 Moixent (Valencia) Spain
+34 962 295 144/5
export@expormim.com
www.expormim.com

Expormim USA LLC
(212) 204-8572
usa@expormim.com
www.expormim.com

3/4

outdoor

upholstered / tapizado

group 13 - bora bora Crevin®



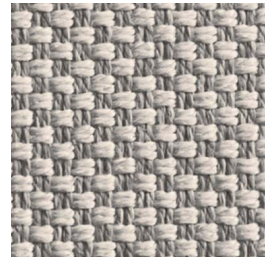
bora bora 99



bora bora 07



bora bora 08



bora bora 11

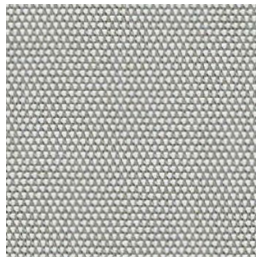


bora bora 42

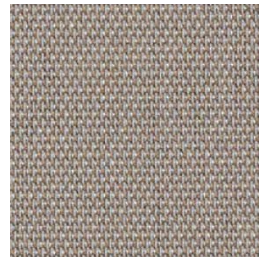


bora bora 47

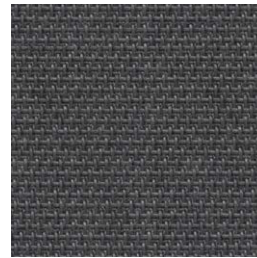
group 13 - sling Sunbrella®



sling sailing seagull



sling sailing space



sling logan graphite

expormim

Expormim S.A.
Pol. Ind. Jaime I
46640 Moixent (Valencia) Spain
+34 962 295 144/5
export@expormim.com
www.expormim.com

Expormim USA LLC
(212) 204-8572
usa@expormim.com
www.expormim.com

4/4