

Bitta

Centre table

by Rodolfo Dordoni

kettal

Centre table

Designer
Rodolfo Dordoni

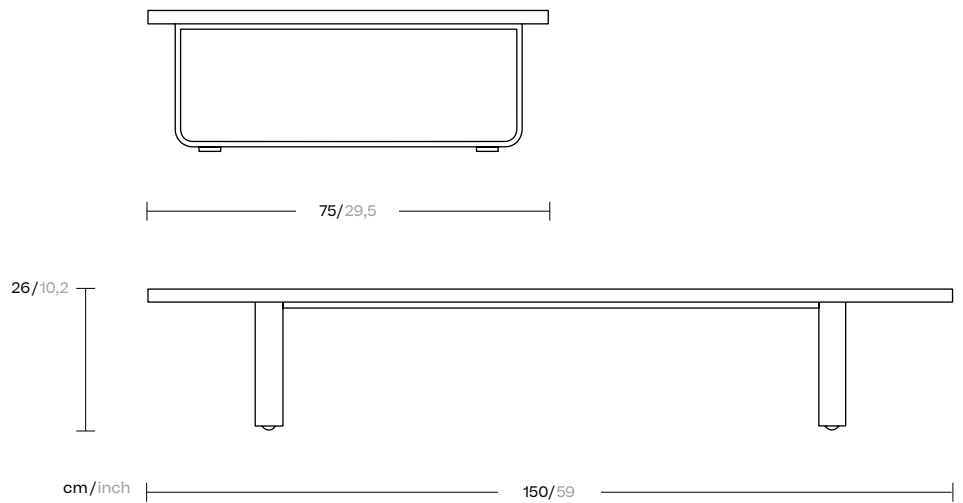
Collection
Bitta

Reference
KS7002400

1/3

Kettal Bitta is characterised by a combination of aluminium frames, seats of braided polyester and comfortable cushions, teak and stone for the table tops. My aim was to create dense braiding that would still let the air through, reminiscent of the braiding of the ropes used to moor boats (hence the name Bitta, which means 'mooring' in Italian), which makes the pieces look lightweight but, at the same time, they look just like cosy nests in natural colours to sit back and relax in.

cm/inch



kettal

Centre table

Designer
Rodolfo Dordoni

Collection
Bitta

Reference
KS7002400

2/3

Materials

Stone Mat polish Travertino
Antioxy, X-Temperature, Resist
U.V., En-581-4, Easy Clean, Eco
Friendly

Teak
Teak A-Grade, Eco Friendly
Oeko-Tek

Aluminium
Antioxy, Heavy Load, Resistant
En-1421, Kettalize-It, Anti-
Scratch, Easy Clean, Flame
Retardant M1, Eco Friendly
Ecoembes Recycling Process

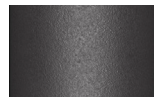
Marble
Antioxy, Mold resistant, Easy
Clean, Resist U.V., X-Temperature

Table Top Options

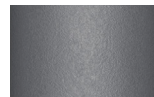
Aluminium 80 x 80
Aluminium 90 x 90
Glaze 80 x 80
Glaze 90 x 90
Teak 80 x 80 contract (Untreated)
Teak 90 x 90 contract (Untreated)
White Marble 94 x 94

Table Top / Legs Colour

Terrain Coatings



Slate Stone
01C



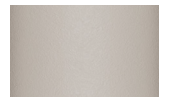
Mysty Smoke
02C



Ash
03C



Bone
04C



Tuff
05C



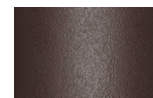
Wet Stone
06C



Sand Dune
07C



Dry Clay
08C



Arabica
09C



Sepia
19C



Rose Canyon
16C



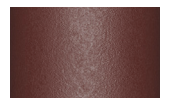
Blossom
20C



Ruby Dust
18C



Sunset Glow
17C



Terrarosa
15C



Terracota
14C



Amber
13C



Ginger Root
12C



Desert Storm
11C



African Savannah
10C



Spring Meadow
28C



Kombu
29C



Forest Stream
27C



Sea Moss
26C



Glacier Ice
25C



Polar Sky
24C



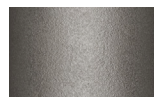
Nightfall
23C



Indigo
22C



Wild Lupin
21C



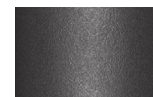
Galena
33C



Bronze
30C



Corten
31C



Manganese
32C

Maintenance

Aluminium

Protect surfaces with barrier elements like film, paper, and peelable lacquers before placement and handling. If accidental contamination or splashing of strong alkalis or acids occurs, wash the affected area with a large amount of clean water, especially cut-outs or holes and cavities.

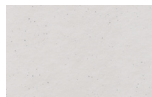
Teak

We recommend treating the wood with sealer every three months, or more frequently in the case of hotel and catering establishments. To restore the teak to its original appearance, sand the entire surface and apply the sealer.

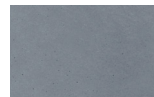
Marble

Clean only with a soft cloth, warm water and pH neutral detergent. Do not use: acids, ammonia, abrasive powders, window cleaners and so on. Any substance with an acid pH will damage marble: lemon juice, wine, etc. Marble is treated with a waterproof sealant to protect it from damp and stains (as long as they are cleaned immediately); however, this sealant naturally wears off over time. We recommend treating the marble with sealant every three months, more frequently in the case of hotel and catering establishments

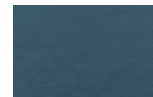
Table Top Colour Options



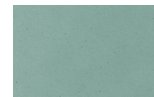
Dolomite
373



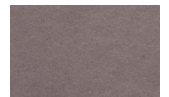
Indian Sapphire
371



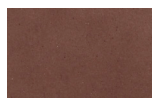
Montana
377



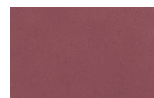
Erinite
376



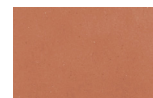
Black Diamond
374



Smoky Quartz
370



Jasper
375

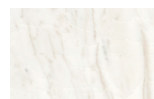


Obsidian
372

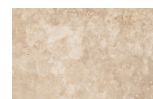
Table Top Colour Options



Teak
904



Marble
079



Stone
150

Glaze Paints (for Glaze)

Other
