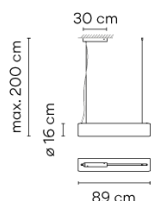
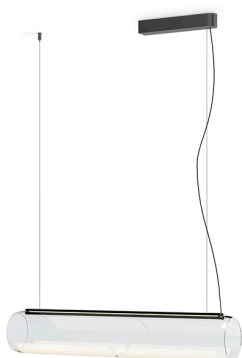


Model Sheet



Optional: Extra cable length
Min. quantity, upcharge and extra lead time apply [EN]

Finish	18 Graphite ADAPTA RF 9913 WX
LED temperature color	3000 K
Dimming	Casambi / DALI-2 / Optical sensor
Installation type	Surface Canopy

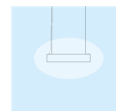
Materials	Profile: Aluminum Diffuser: Borosilicate
Light source	1 x LED STRIP 24V 30W G
LED	CRI>90 2613.6 lm 87.12 3000 K
Driver	Constant Voltage 100~240 V V 50~60 Hz HZ
Remarks	The glass is made of borosilicate. It is typical for the glass to have small air bubbles, some inclusions and tiny scratches. These do not affect the quality or the resistance of the glass.

Application	Hanging lamps
Packaging	1 Box 1.18 m x 0.35 m x 0.37 m Gross weight 9.5 Net weight 7.5 Vol. 0.1528

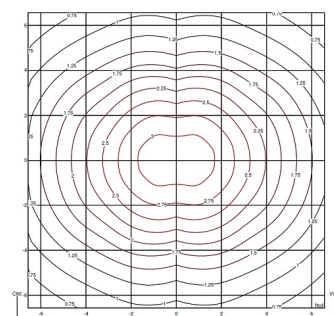
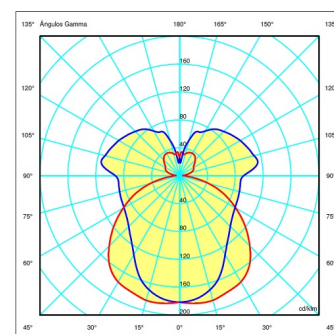
Lighting effect

General lighting

Lamp for general lighting that equally distributes the light in all directions.



Photometric Data



Efficiency	1
Coordinate System	CG
Total Flux	1158.86 lm
Maximum Value	185.32 cd/klm

Other Applications

